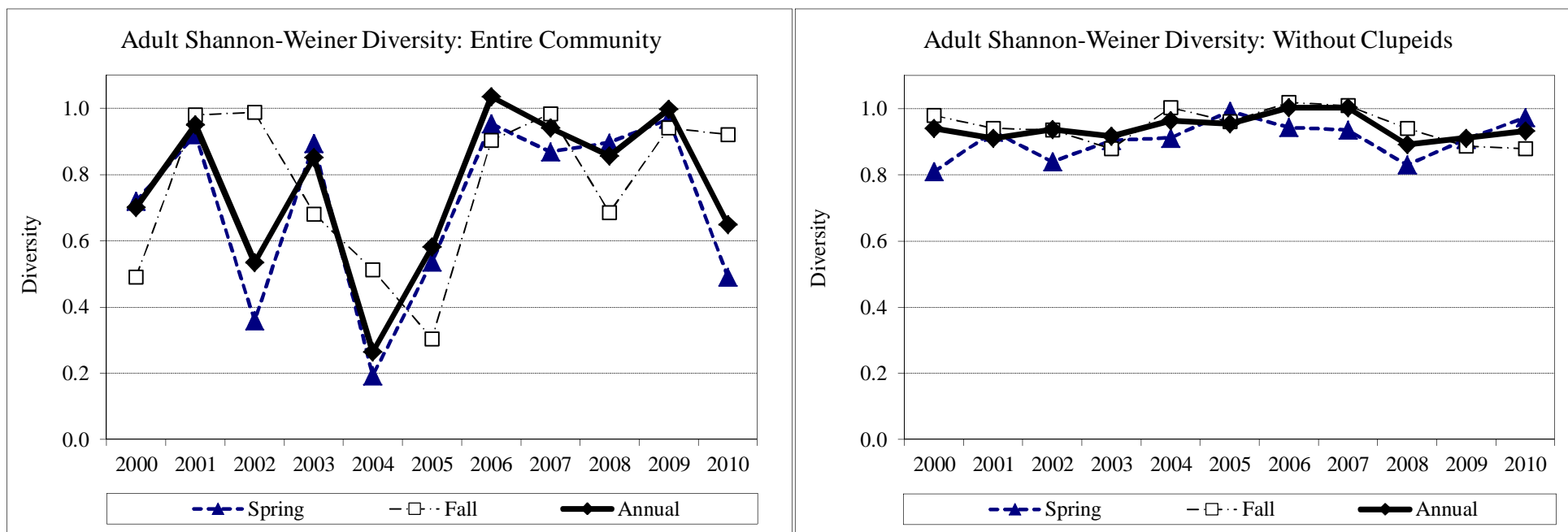


Electrofishing diversity in Onondaga Lake from 2000-2010.

Data collected from AMP littoral zone electrofishing efforts. Clupeids (shad and alewives) are often captured in high numbers which can dramatically alter the diversity results, therefore the charts are presented with clupeids included and not included so that the trends in diversity of the remaining community can be discerned.



2000-2010 Trends

Diversity with Clupeids

Sample Period	2000	2001	2002	2003	2004	2005	2006	2007	2008	2009	2010
Spring	0.720	0.920	0.359	0.894	0.193	0.536	0.953	0.869	0.896	0.968	0.491
Fall	0.490	0.980	0.987	0.681	0.513	0.304	0.903	0.983	0.686	0.941	0.920
Annual	0.700	0.950	0.535	0.851	0.265	0.582	1.035	0.940	0.856	0.997	0.649

Diversity without Clupeids

Sample Period	2000	2001	2002	2003	2004	2005	2006	2007	2008	2009	2010
Spring	0.810	0.930	0.840	0.904	0.911	0.991	0.944	0.936	0.830	0.908	0.973
Fall	0.980	0.940	0.935	0.880	1.002	0.960	1.019	1.009	0.940	0.886	0.879
Annual	0.940	0.910	0.937	0.917	0.964	0.954	1.003	1.003	0.891	0.911	0.933