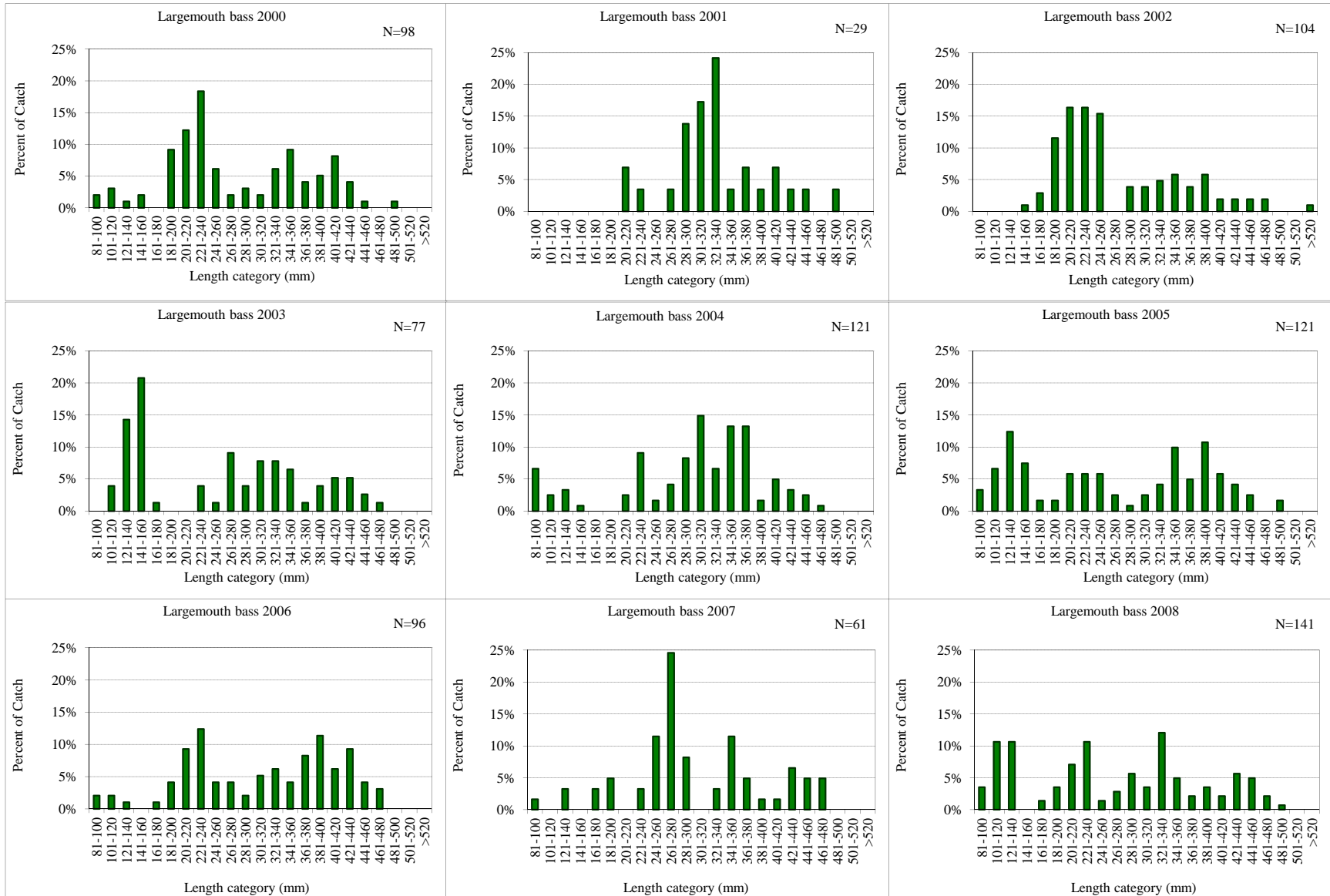
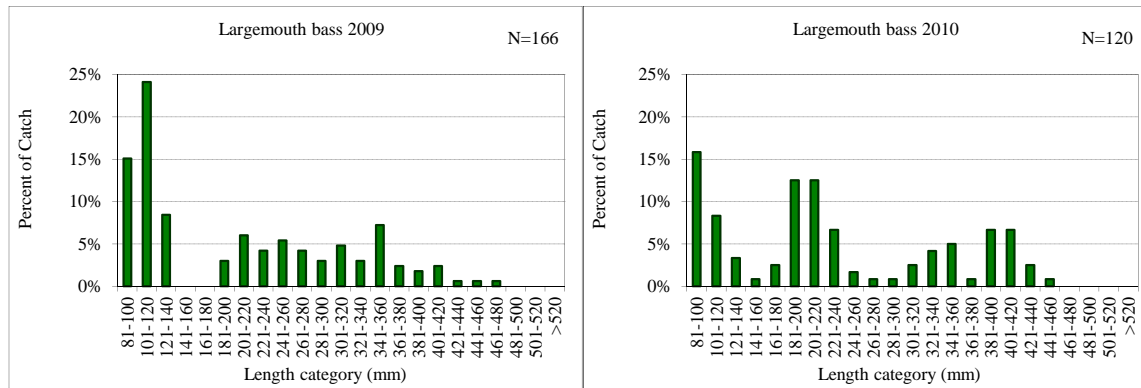


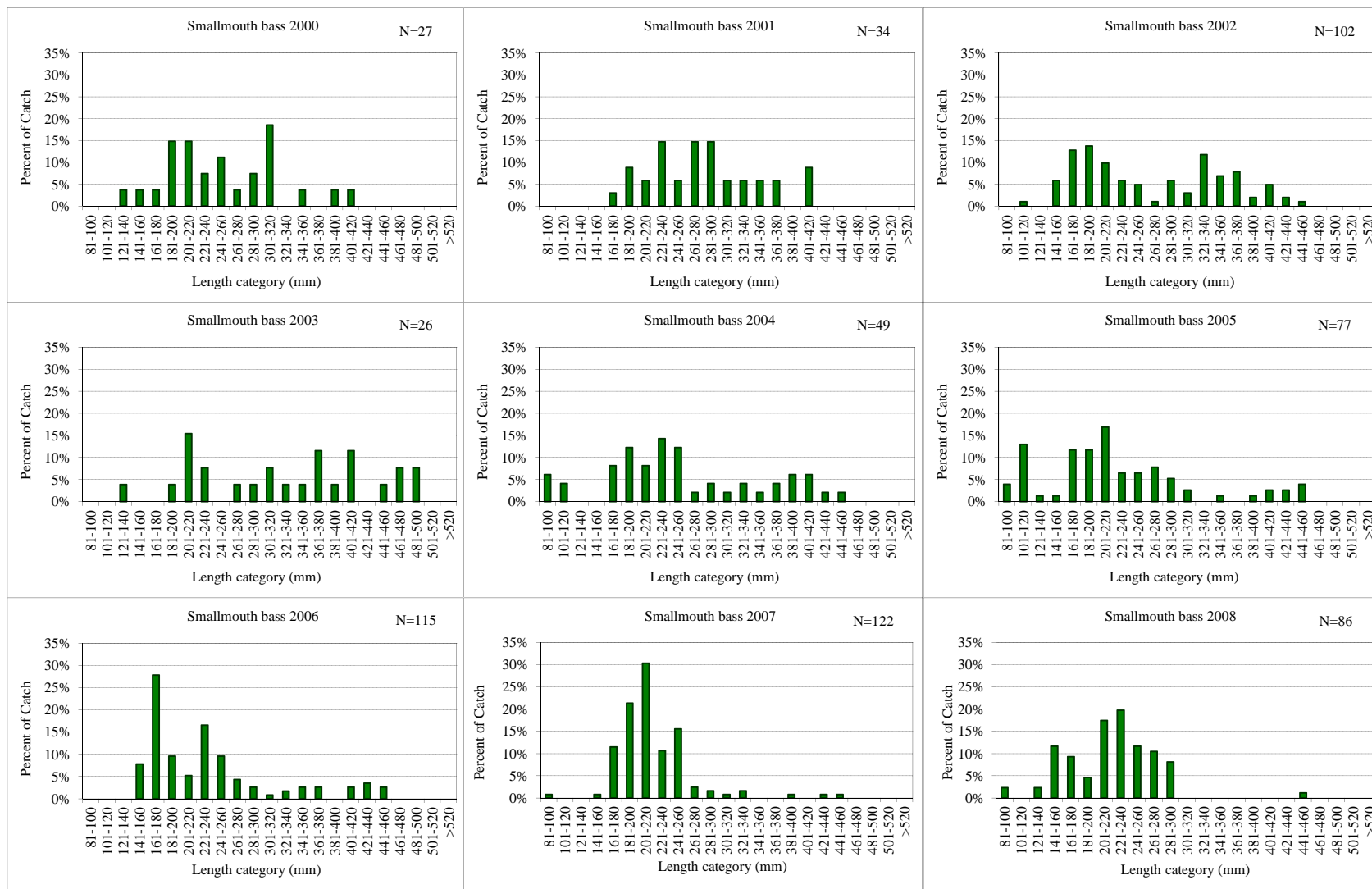
A: Largemouth bass length frequency in Fall electrofishing and gill netting combined from 2000 to 2010.



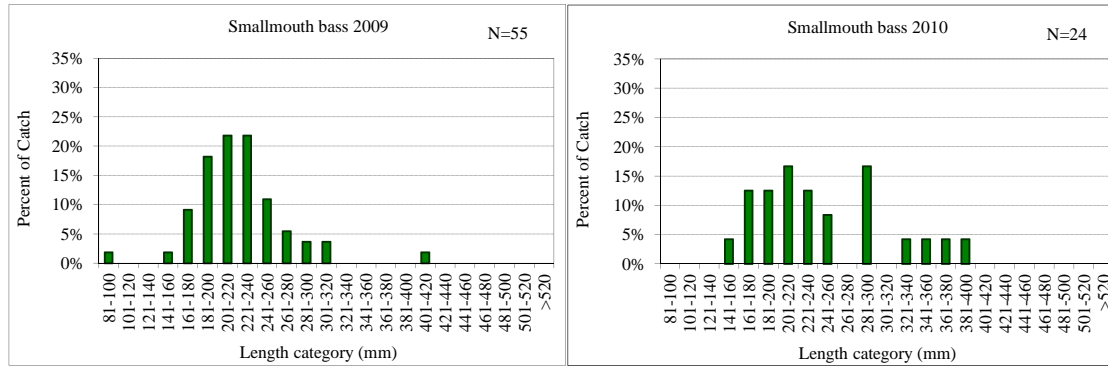
A: Largemouth bass length frequency in Fall electrofishing and gill netting combined from 2000 to 2010 (continued).



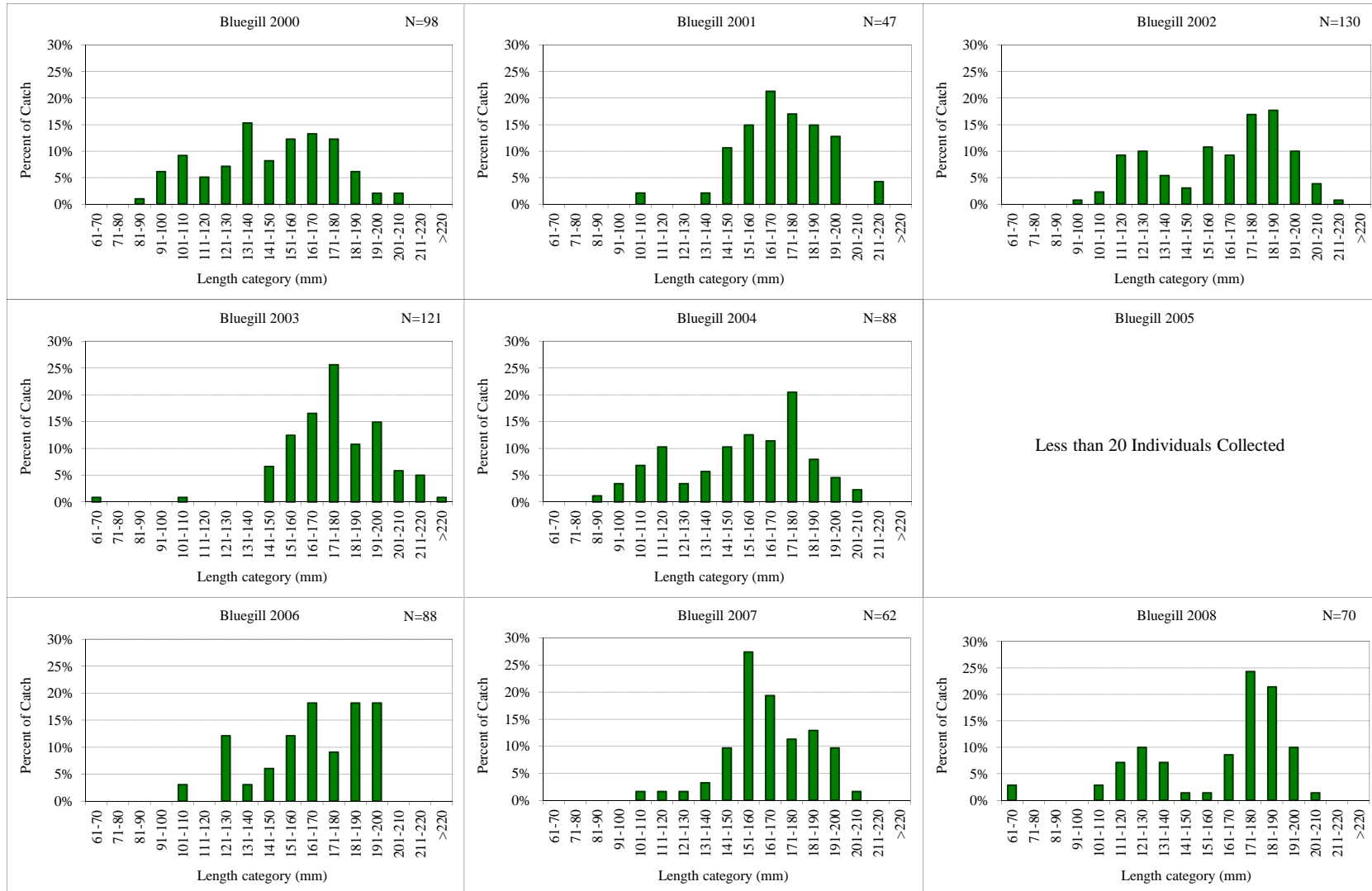
B: Smallmouth bass length frequency in Fall electrofishing and gill netting combined from 2000 to 2010.



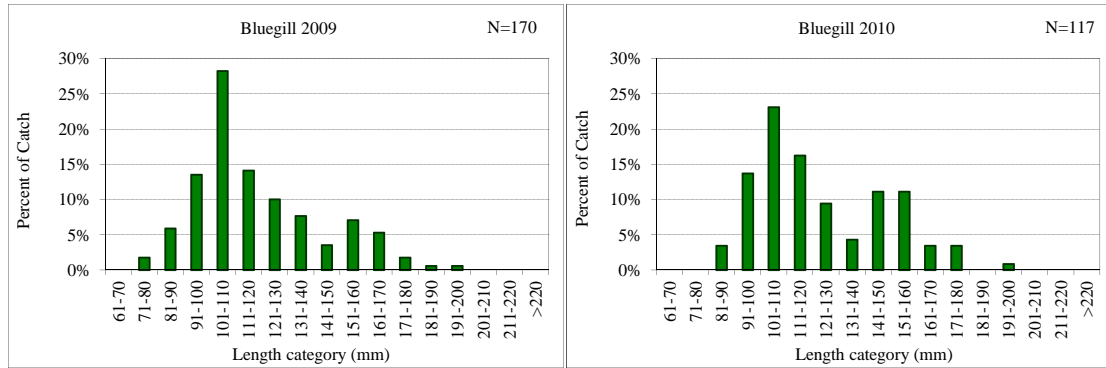
B: Smallmouth bass length frequency in Fall electrofishing and gill netting combined from 2000 to 2010 (continued).



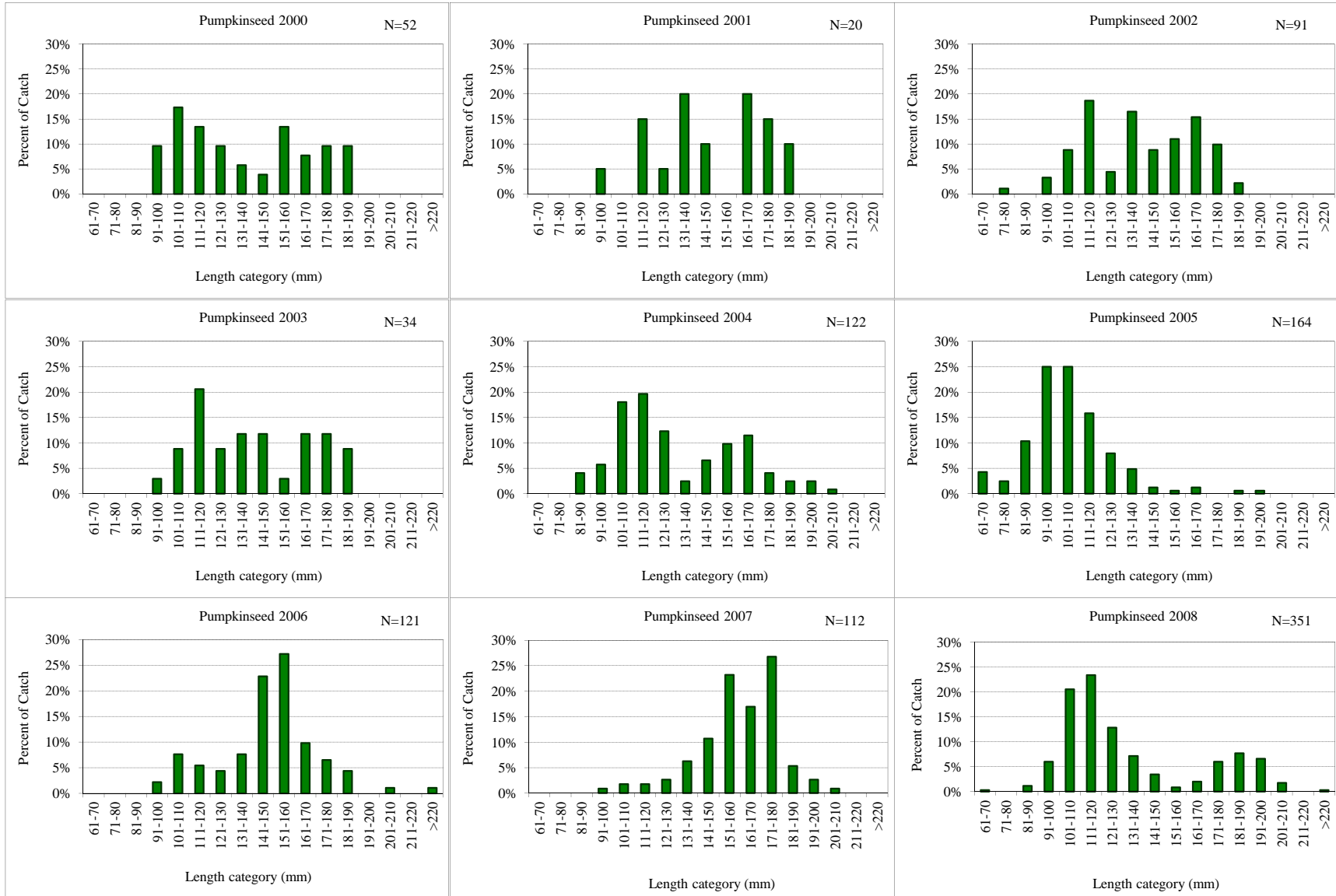
C: Bluegill length frequency in Fall electrofishing and gill netting combined from 2000 to 2010.



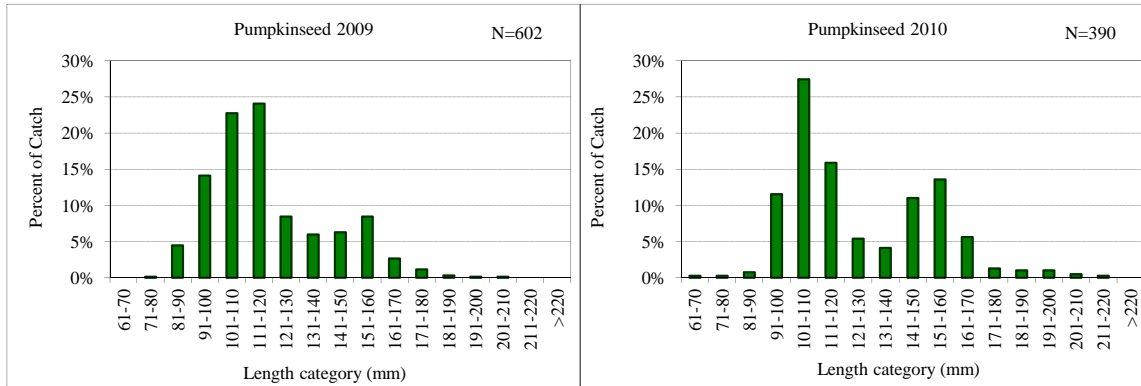
C: Bluegill length frequency in Fall electrofishing and gill netting combined from 2000 to 2010 (continued).



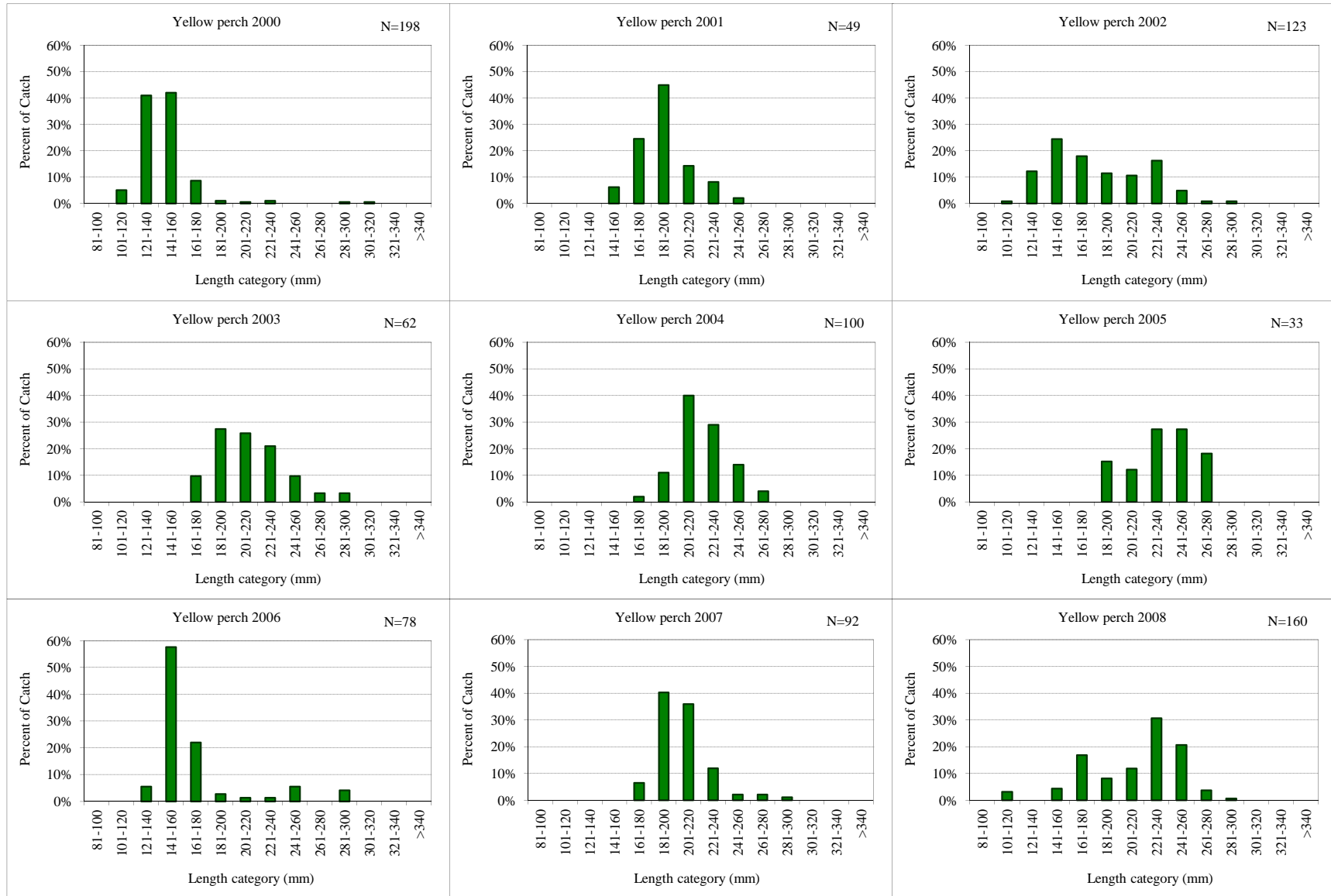
D: Pumpkinseed length frequency in Fall electrofishing and gill netting combined from 2000 to 2010.



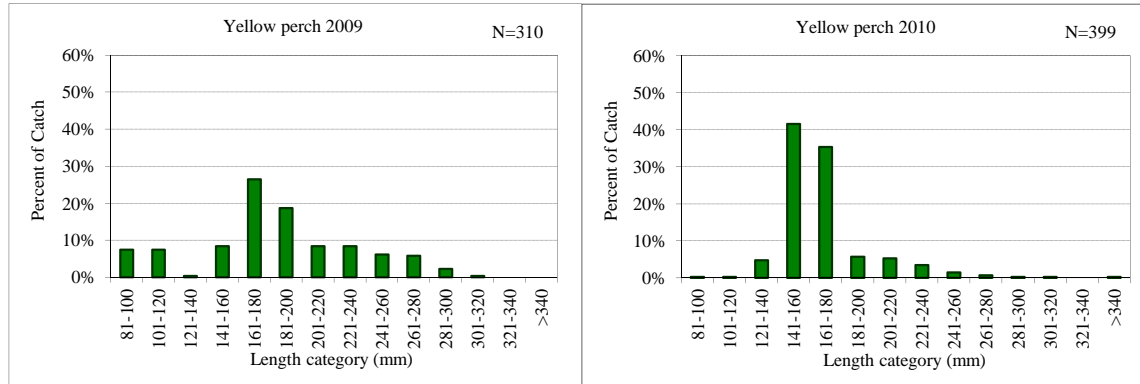
D: Pumpkinseed length frequency in Fall electrofishing and gill netting combined from 2000 to 2010 (continued).



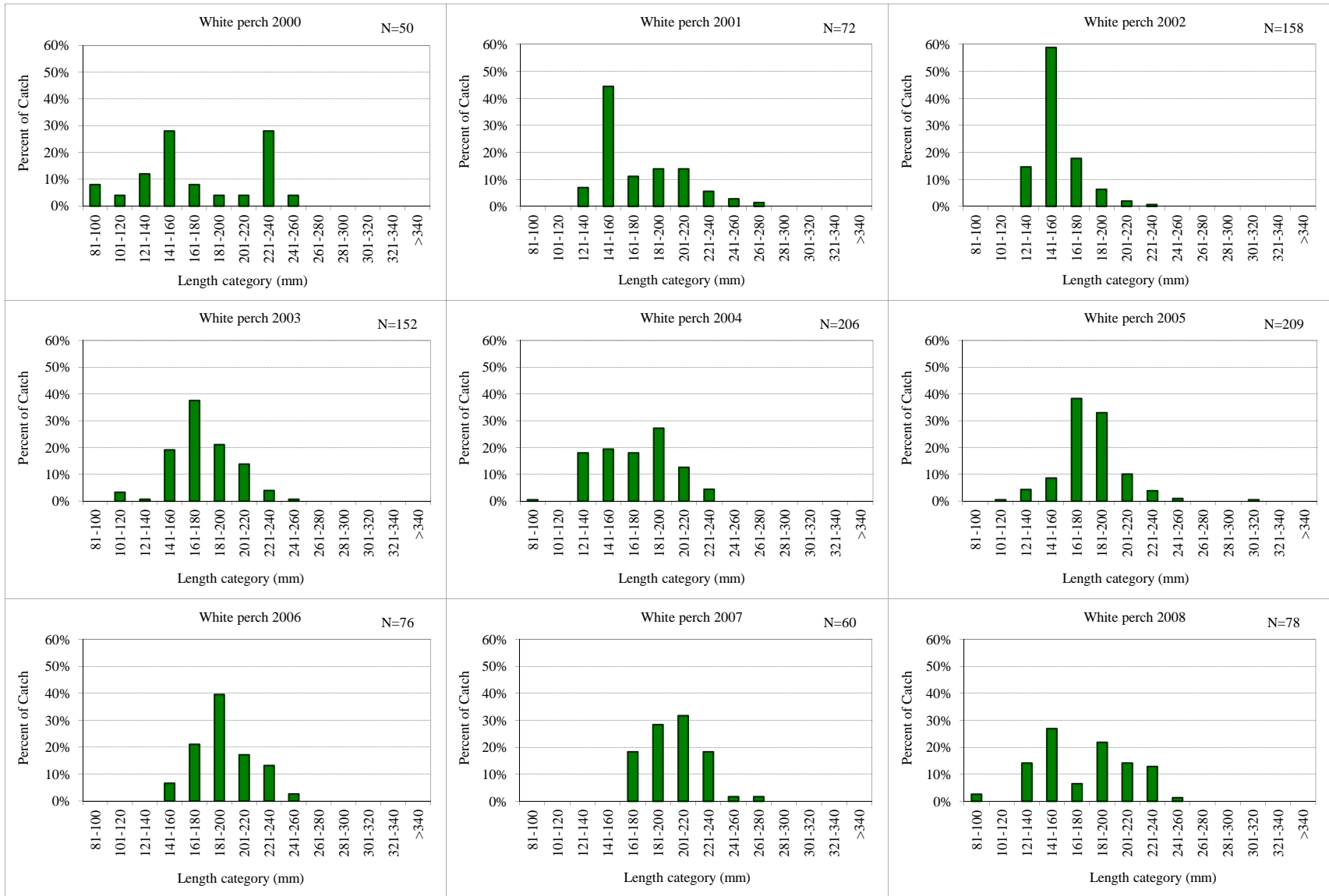
E: Yellow perch length frequency in Fall electrofishing and gill netting combined from 2000 to 2010.



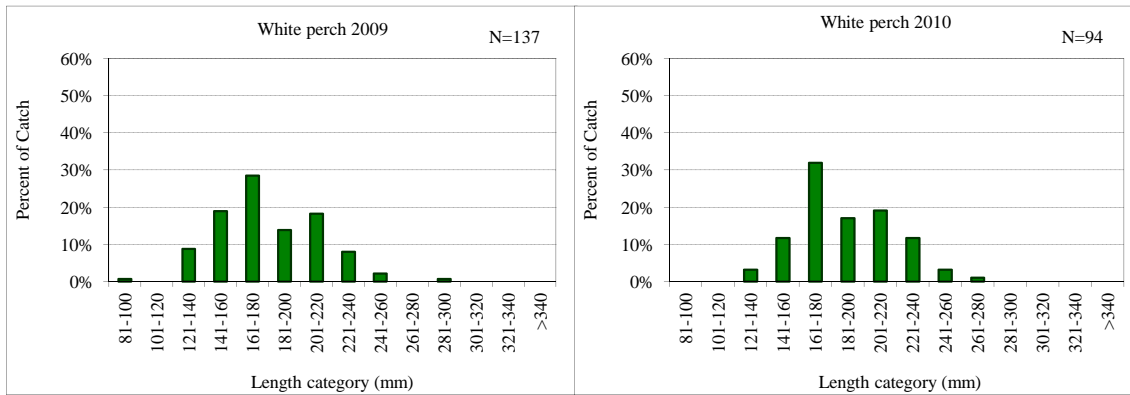
E: Yellow perch length frequency in Fall electrofishing and gill netting combined from 2000 to 2010 (continued).



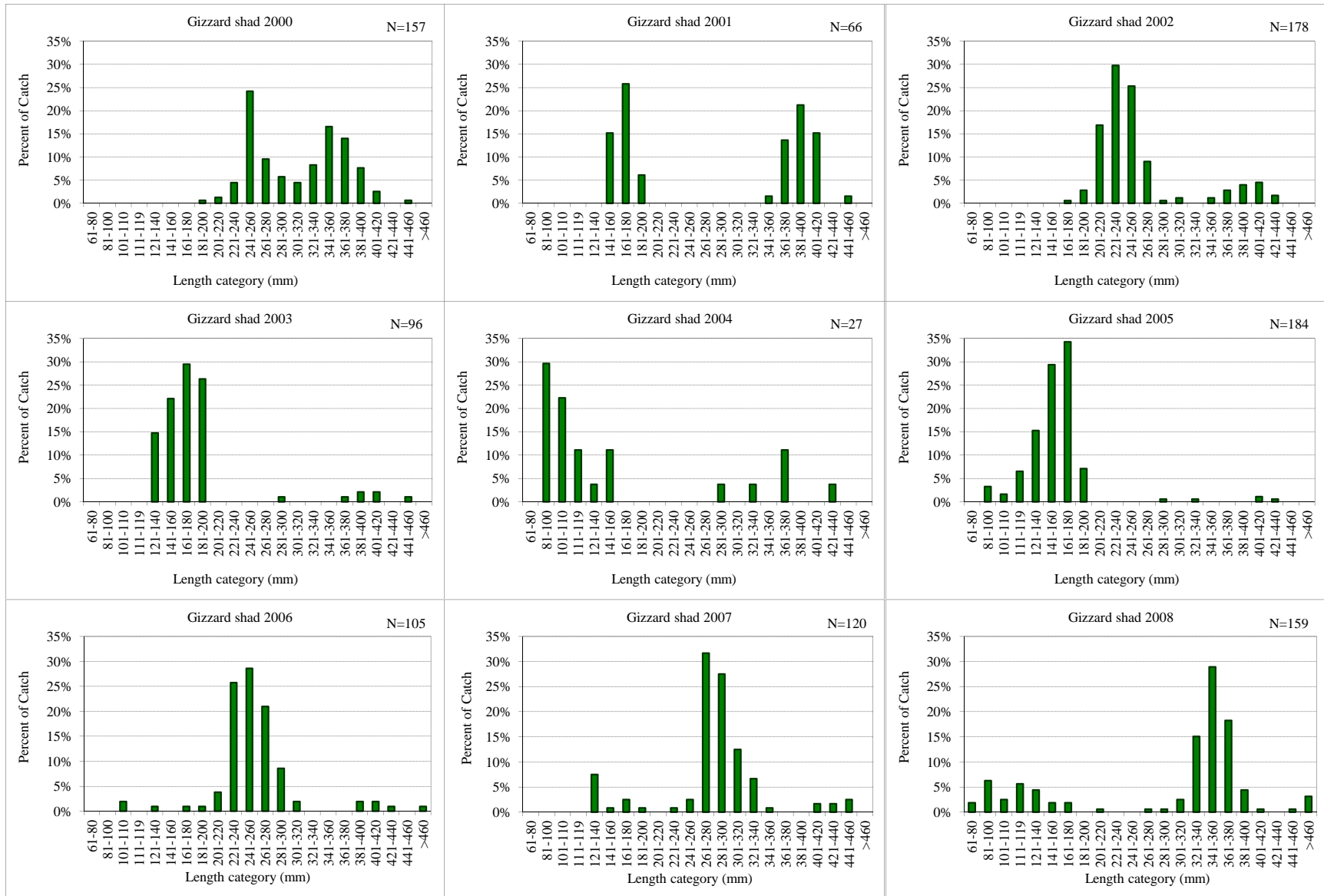
F: White perch length frequency in Fall electrofishing and gill netting combined from 2000 to 2010.



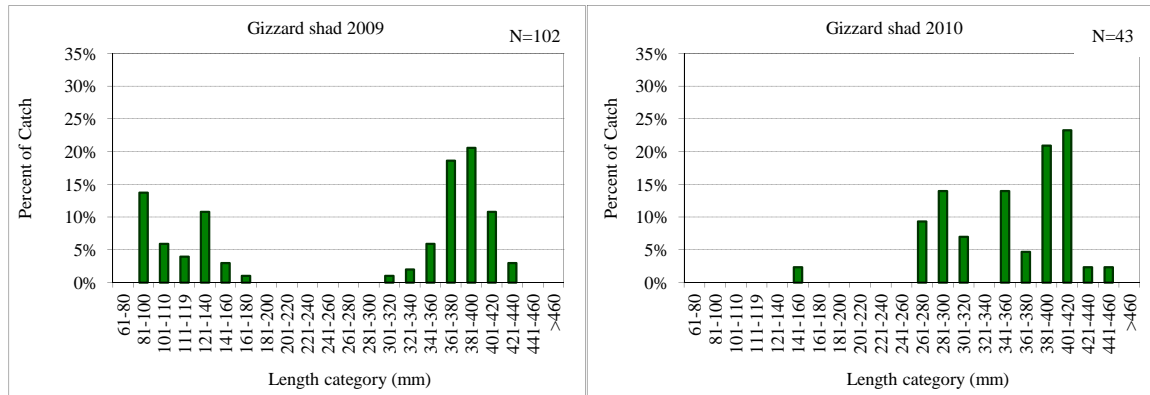
F: White perch length frequency in Fall electrofishing and gill netting combined from 2000 to 2010 (continued).



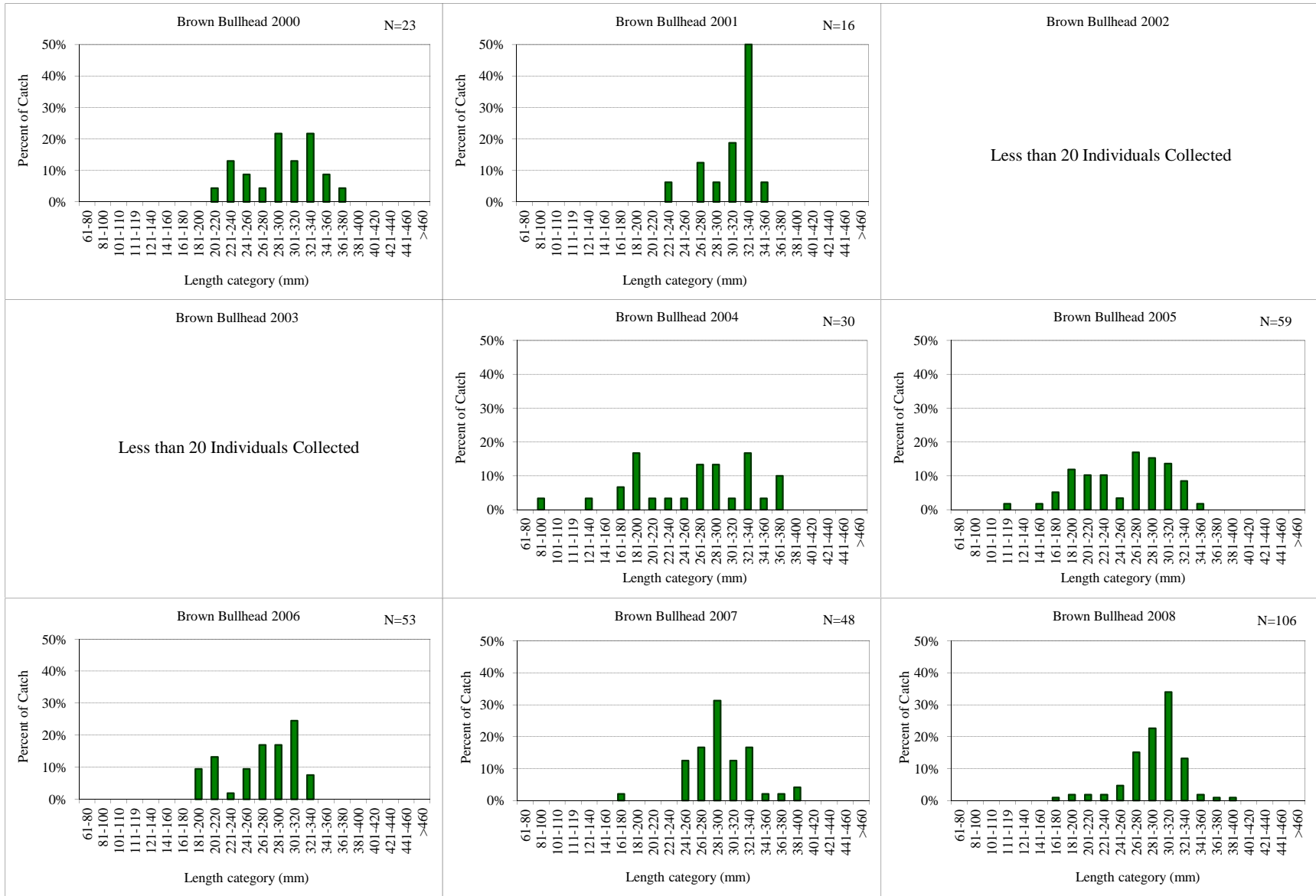
G: Gizzard shad length frequency in Fall electrofishing and gill netting combined from 2000 to 2010.



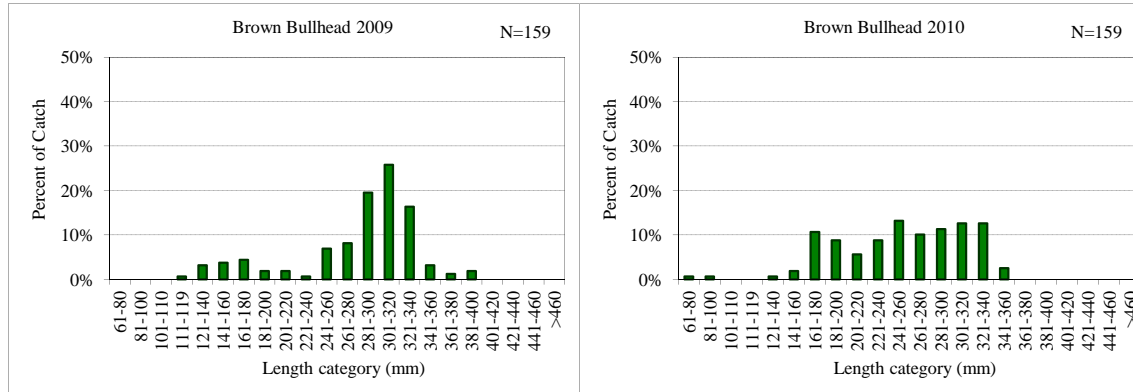
G: Gizzard shad length frequency in Fall electrofishing and gill netting combined from 2000 to 2010.



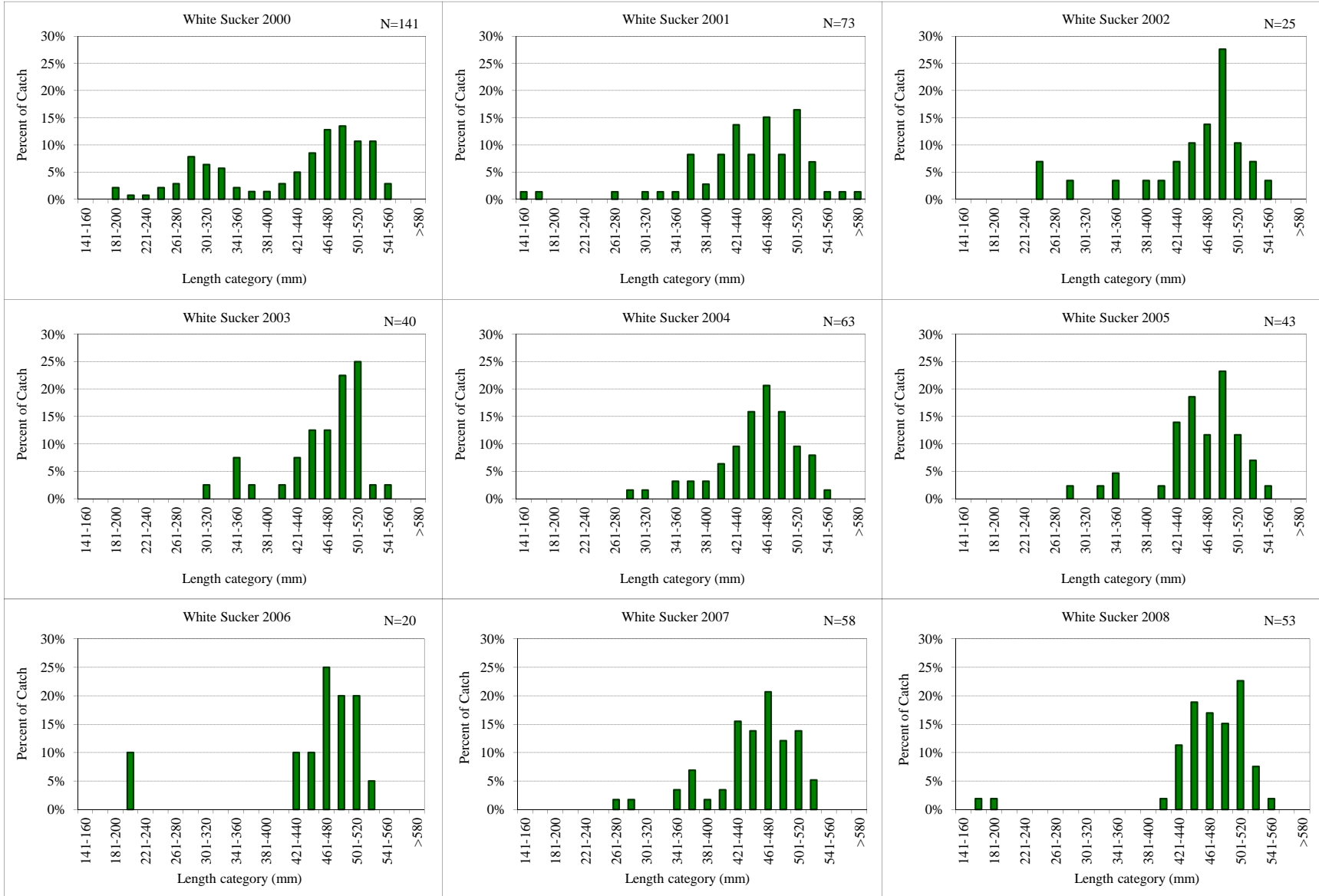
H: Brown bullhead length frequency in Fall electrofishing and gill netting combined from 2000 to 2010.



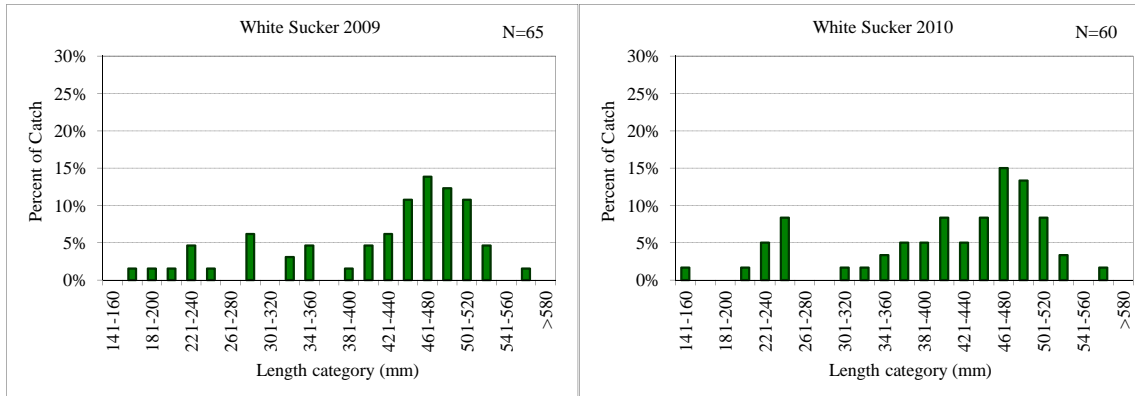
H: Brown bullhead length frequency in Fall electrofishing and gill netting combined from 2000 to 2010 (continued).



I: White sucker length frequency in Fall electrofishing and gill netting combined from 2000 to 2010.



I: White sucker length frequency in Fall electrofishing and gill netting combined from 2000 to 2010 (continued).



J: Lepomis species length frequency in Fall electrofishing and gill netting combined from 2000 to 2010.

