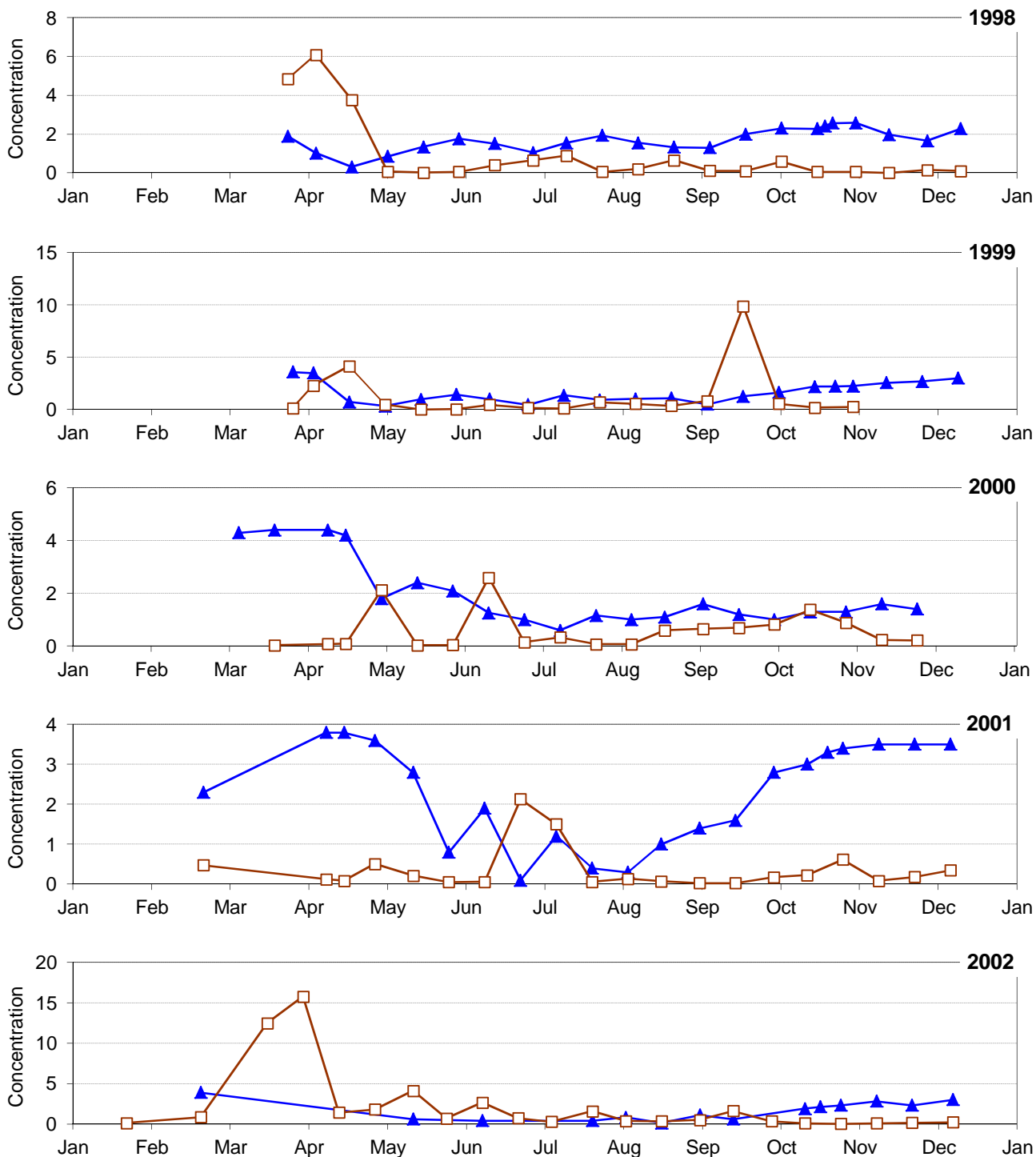


### Silica and Diatoms, 1998-2010 Onondaga Lake South Deep

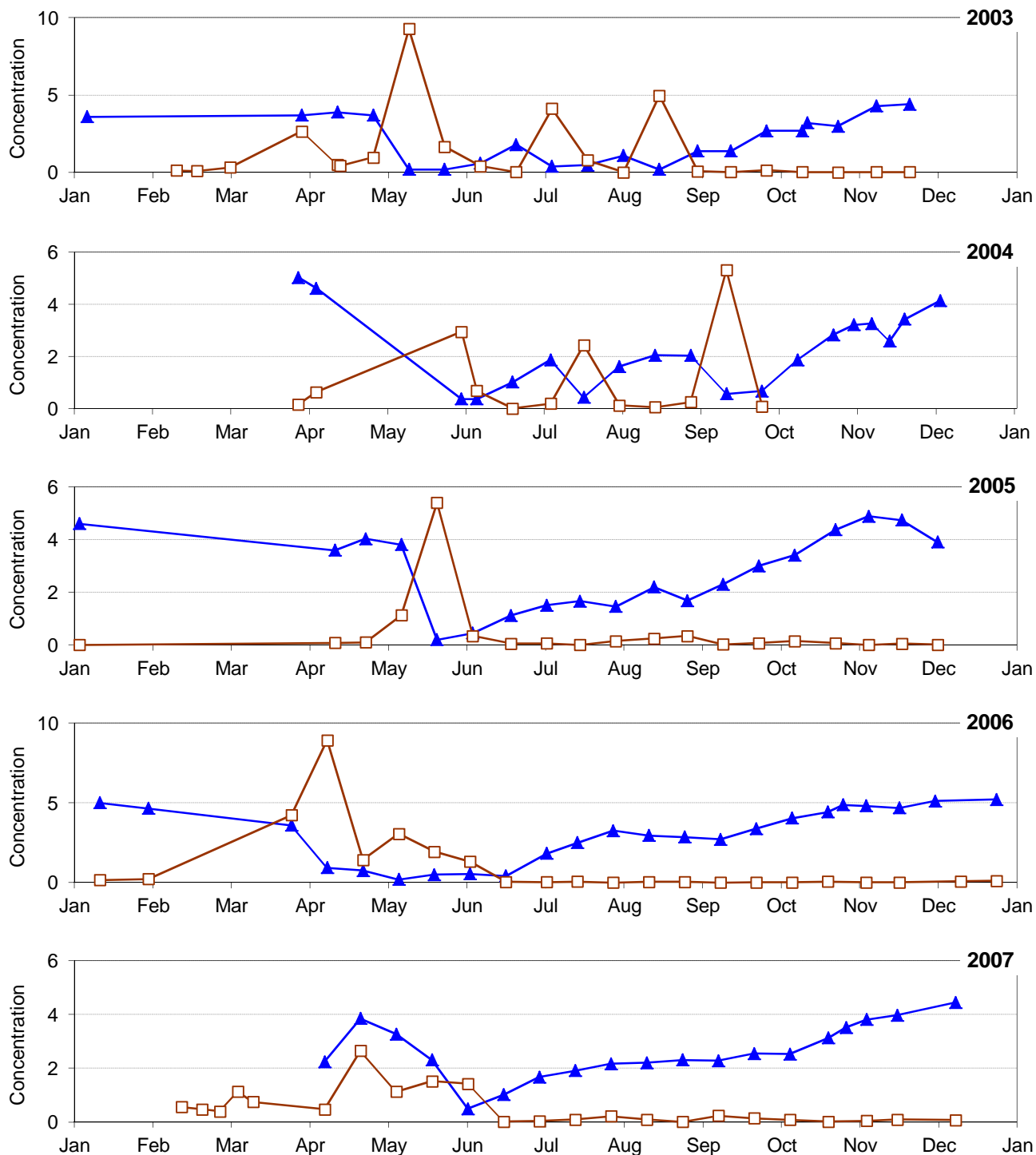


**Notes:**

Concentration units mg/L (total dissolved Silica) and cm<sup>3</sup>/m<sup>3</sup> (Diatoms biovolume).  
 Silica detection level over time ranged from 0.2 mg/l to 0.5 mg/l  
 Silica results reported for sample depth = 0m



### Silica and Diatoms, 1998-2010 Onondaga Lake South Deep



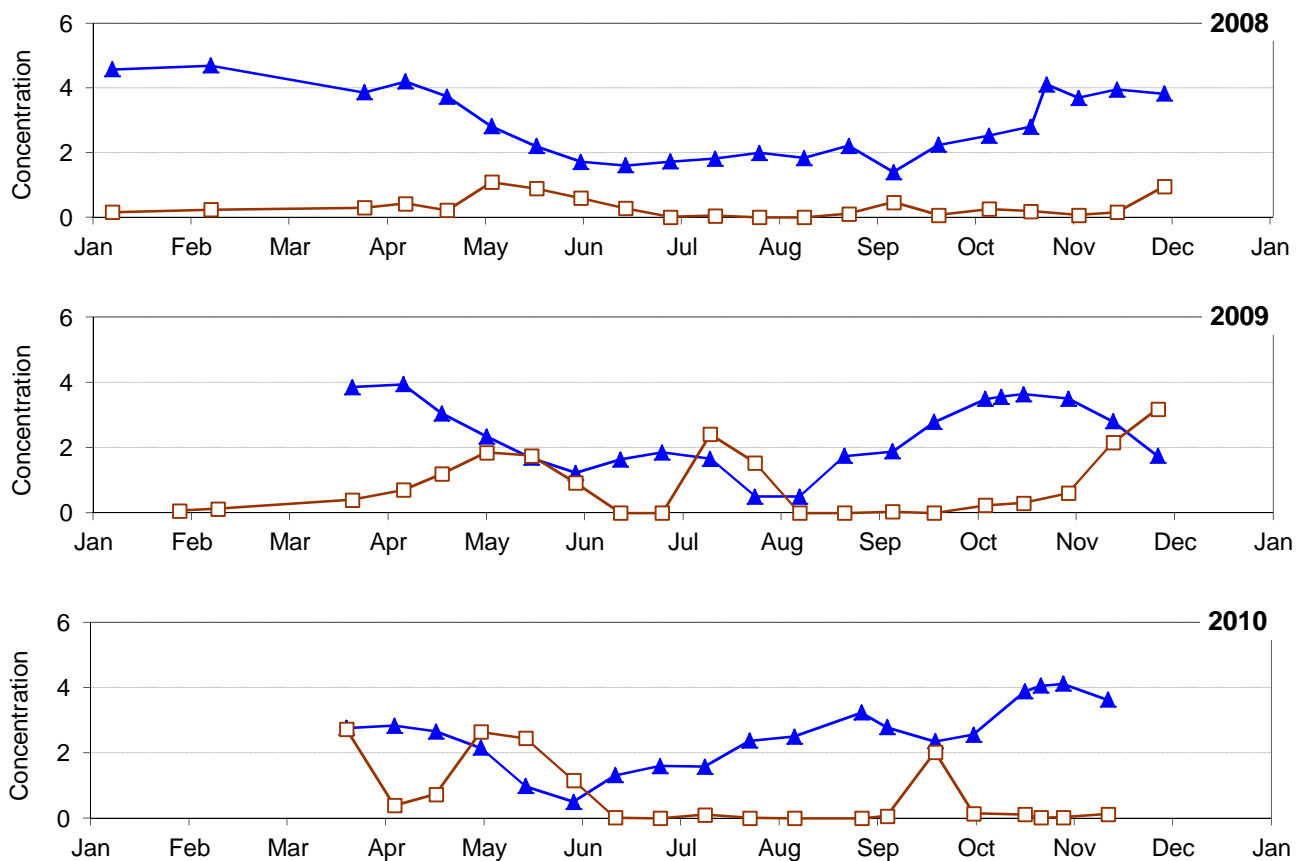
Notes:

Concentration units mg/L (total dissolved Silica) and cm<sup>3</sup>/m<sup>3</sup> (Diatoms biovolume).  
 Silica detection level over time ranged from 0.2 mg/l to 0.5 mg/l  
 Silica results reported for sample depth = 0m



Library Reference 8.10

### Silica and Diatoms, 1998-2010 Onondaga Lake South Deep



Notes:

Concentration units mg/L (total dissolved Silica) and  $\text{cm}^3/\text{m}^3$  (Diatoms biovolume).

Silica detection level over time ranged from 0.2 mg/l to 0.5 mg/l

Silica results reported for sample depth = 0m

