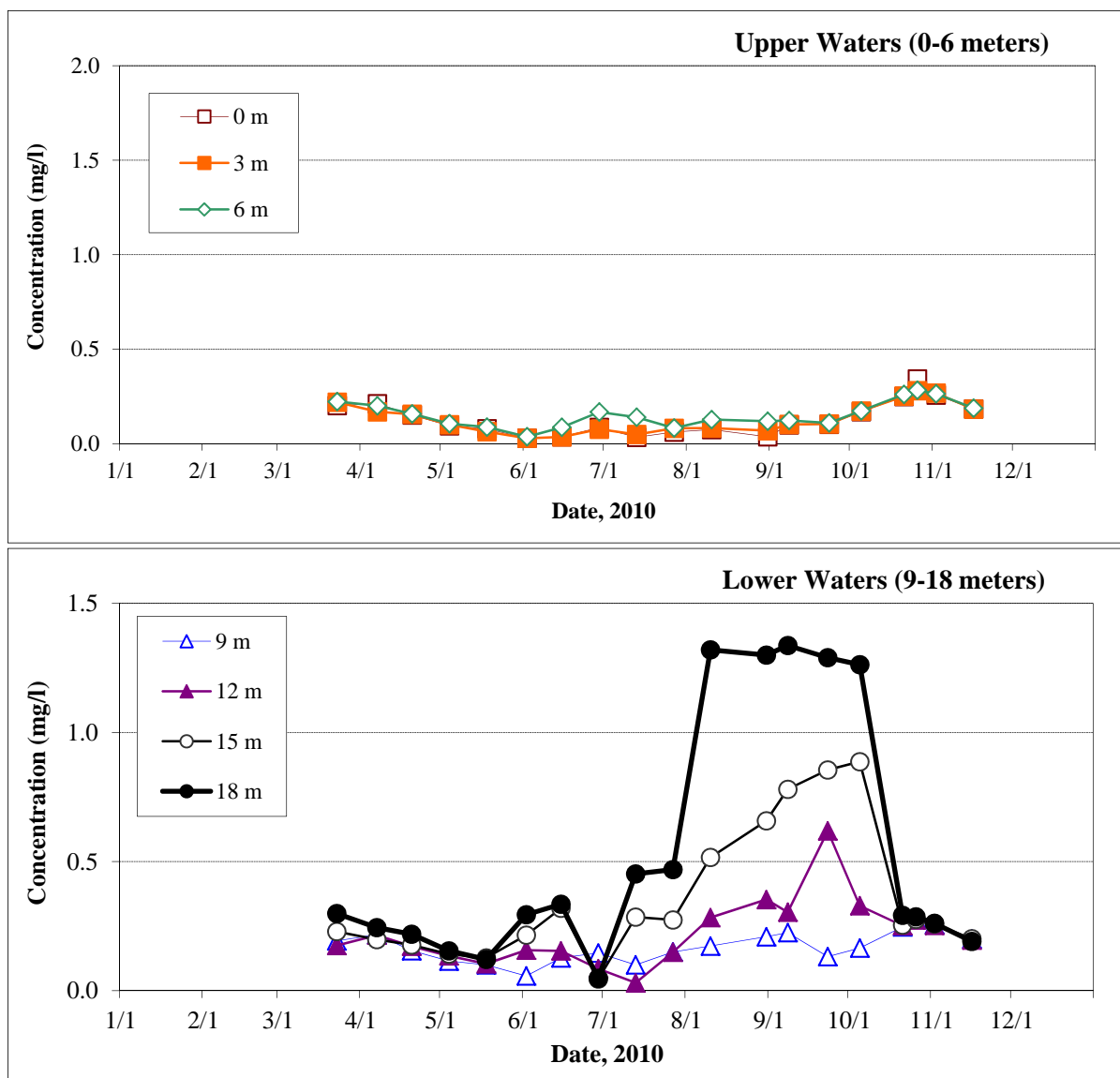


Library Reference 7.7



2010 concentrations of ammonia-N at South Deep by depths. The lower waters of the lake exhibit an increase in ammonia-N during the stratified period, reflecting decay of settled organic matter (primarily phytoplankton) and release of ammonia from the sediments. At fall turnover, the ammonia that had accumulated in the lower waters mixed throughout the water column, coming into contact with oxygen and becoming nitrified. The Minimum Reportable Limit (MRL) for ammonia-N was 0.01 mg/l; minimum concentration detected in 2010 was 0.029 mg/l.