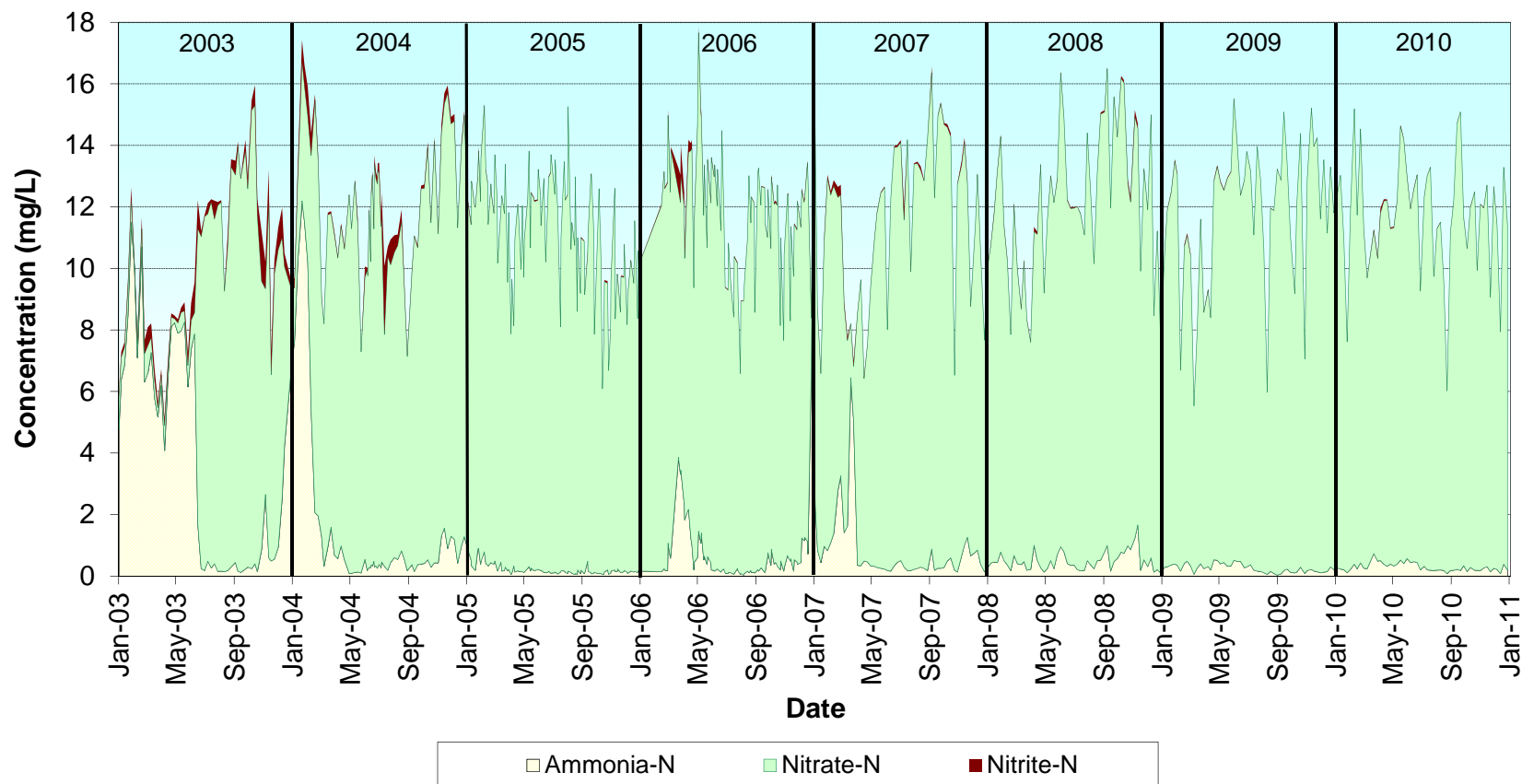


Library Reference 4.5



Inorganic nitrogen species concentration in Metro effluent 2003-2010. Ammonia-N and nitrite-N loading from the Metro plant has decreased as a direct result of the improvements in ammonia treatment, including the nitrification provided by operation of the BAF which went on-line in January 2004. Concurrent with the decrease in ammonia-N and nitrite-N, loading of nitrate-N has increased, since nitrate-N is the by-product of the nitrification process that the BAF operation provides.