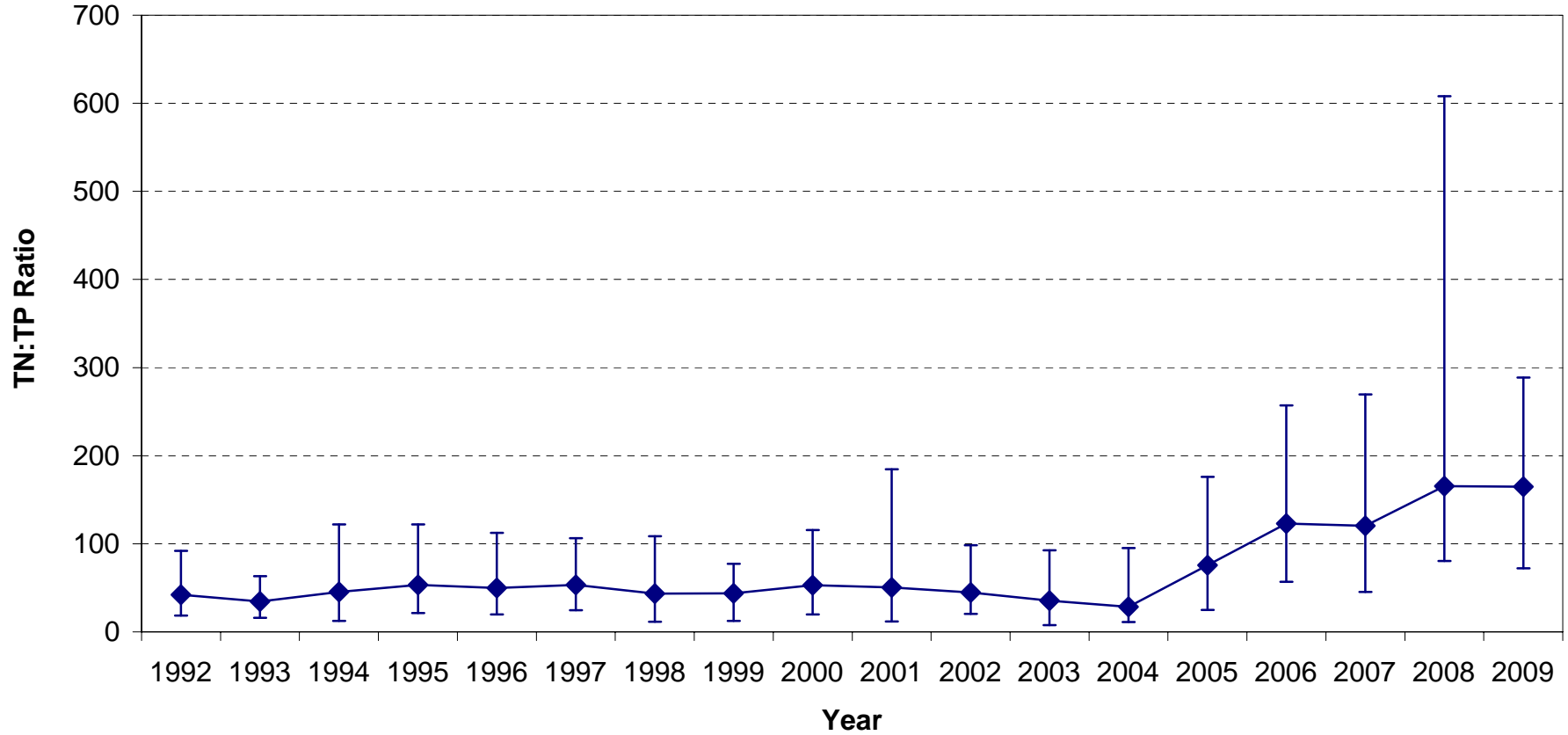


**Annual Average TN:TP Ratio Metro Effluent
with Annual Max and Min**



The ratio of total Nitrogen (sum of Total Kjeldahl Nitrogen, Nitrite, and Nitrate) to total Phosphorus in Metro Outfall 001 effluent over time. The Acti-Flo phosphorus treatment system came on-line at Metro in 2005; the reduction in total Phosphorus with no net change in total Nitrogen results in higher TN:TP ratio since 2005.