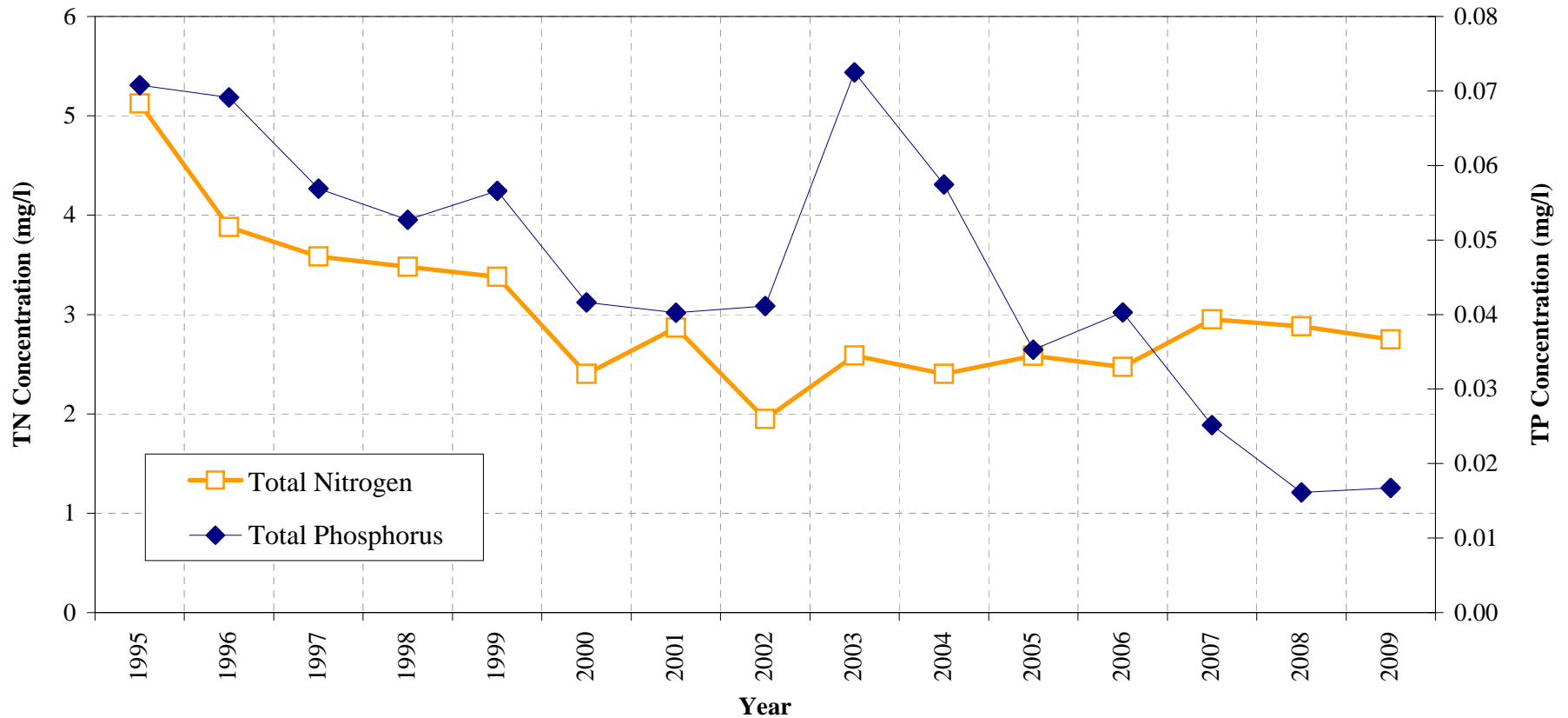


Library Reference 11.5.1



Summer average concentrations of total nitrogen and total phosphorus over time in the upper waters (0-3m) at Onondaga Lake South Deep. The summer average is calculated for the period from June 1 to September 30. Total nitrogen was calculated as the sum of Total Kjeldahl Nitrogen (TKN), nitrite-N and nitrate-N concentrations; total phosphorus was reported by the laboratory. Nitrite-N and nitrate-N samples were collected as composites of the upper mixed layer (UML); TKN and phosphorus were collected at discrete depths and the results were averaged for 0m and 3m depths to represent upper waters.