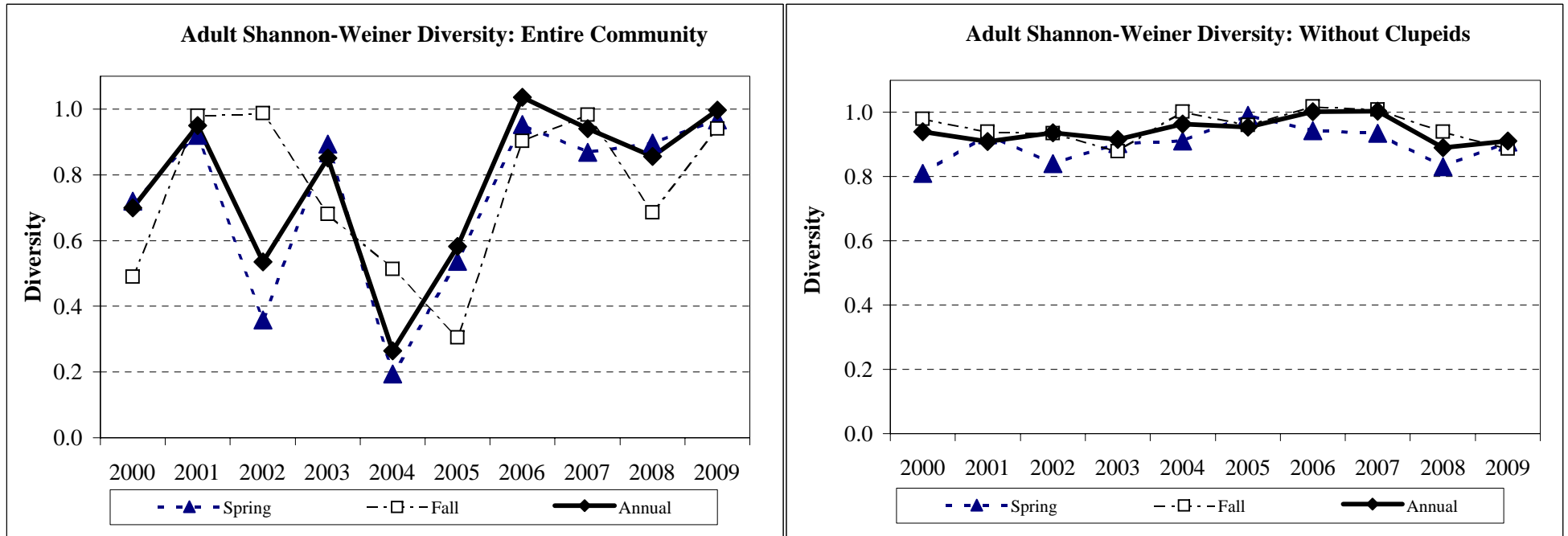


Electrofishing diversity in Onondaga Lake from 2000-2009.

Data collected from AMP littoral zone electrofishing efforts. Clupeids (shad and alewives) are often captured in high numbers which can dramatically alter the diversity results, therefore the charts are presented with clupeids included and not included so that the trends in diversity of the remaining community can be discerned.



2000-2009 Trends

Diversity with Clupeids

Sample Period	2000	2001	2002	2003	2004	2005	2006	2007	2008	2009
Spring	0.720	0.920	0.359	0.894	0.193	0.536	0.953	0.869	0.896	0.968
Fall	0.490	0.980	0.987	0.681	0.513	0.304	0.903	0.983	0.686	0.941
Annual	0.700	0.950	0.535	0.851	0.265	0.582	1.035	0.940	0.856	0.997

Diversity without Clupeids

Sample Period	2000	2001	2002	2003	2004	2005	2006	2007	2008	2009
Spring	0.810	0.930	0.840	0.904	0.911	0.991	0.944	0.936	0.830	0.908
Fall	0.980	0.940	0.935	0.880	1.002	0.960	1.019	1.009	0.940	0.886
Annual	0.940	0.910	0.937	0.917	0.964	0.954	1.003	1.003	0.891	0.911