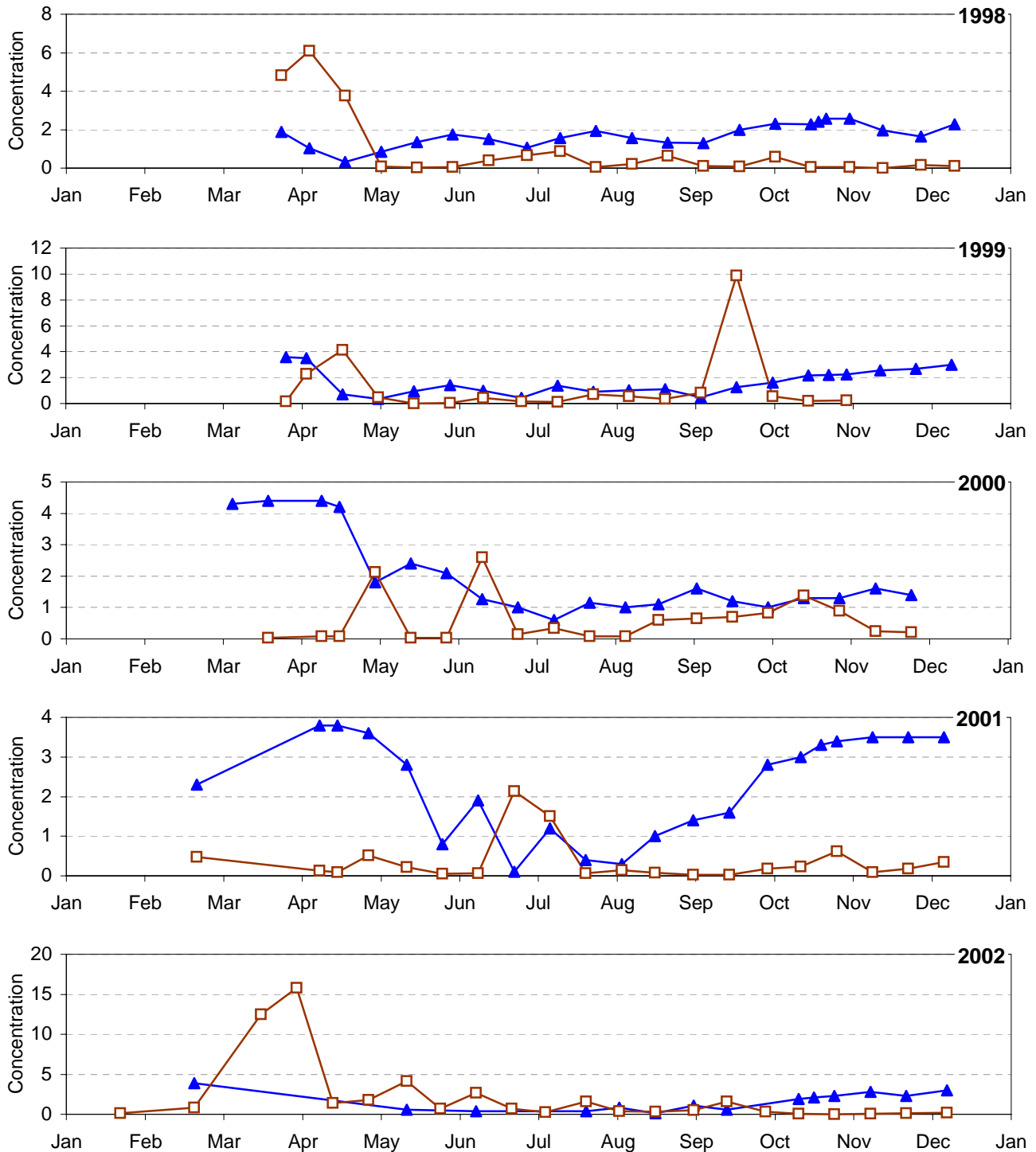


Silica and Diatoms over Time Onondaga Lake South Deep



Notes:

Concentration units mg/L (total dissolved Silica) and cm^3/m^3 (Diatoms biovolume).

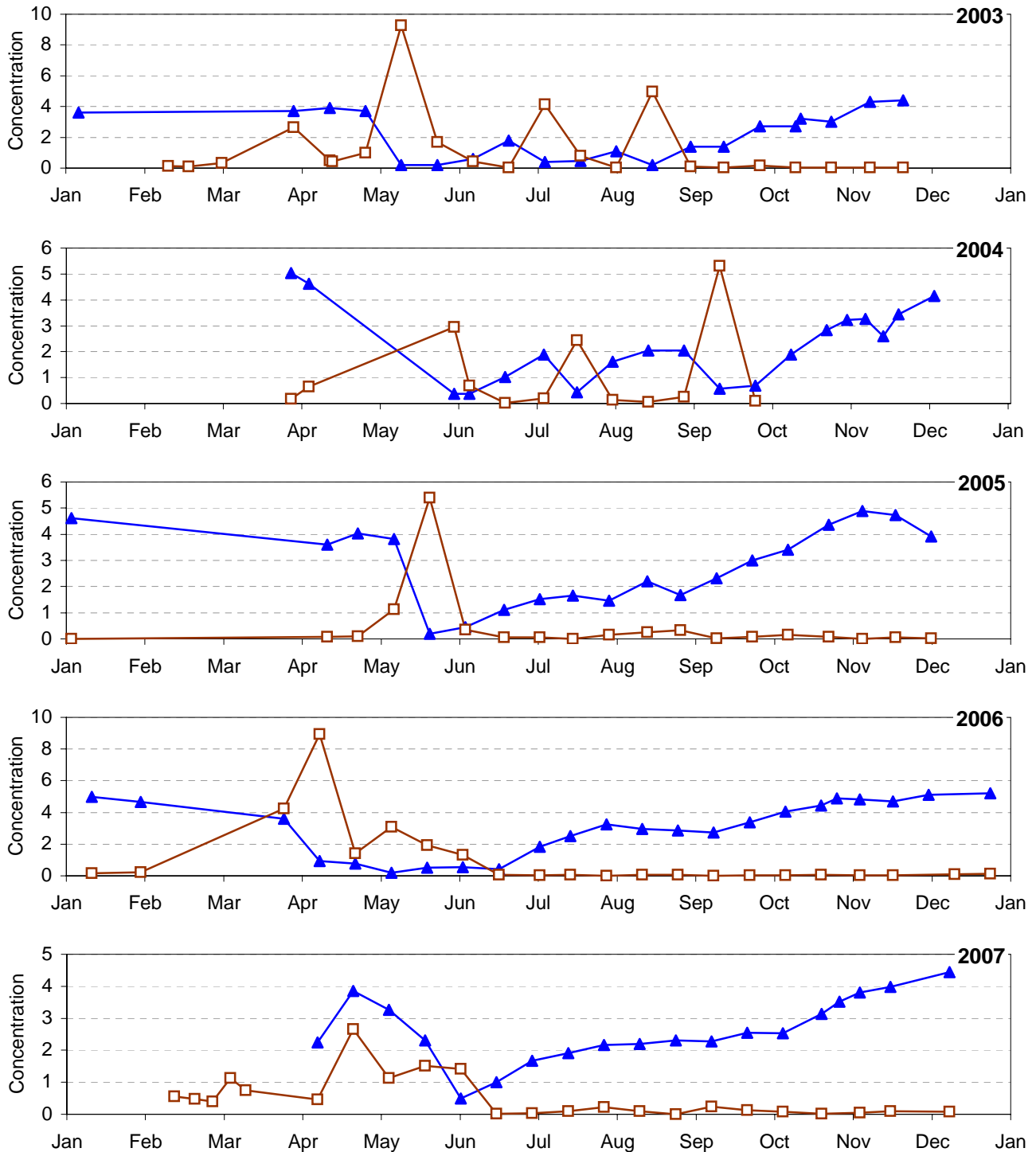
Silica detection level over time ranged from 0.2 mg/l to 0.5 mg/l

Silica results reported for sample depth = 0m



Library Reference 8.3.3

Silica and Diatoms over Time Onondaga Lake South Deep



Notes:

Concentration units mg/L (total dissolved Silica) and cm³/m³ (Diatoms biovolume).

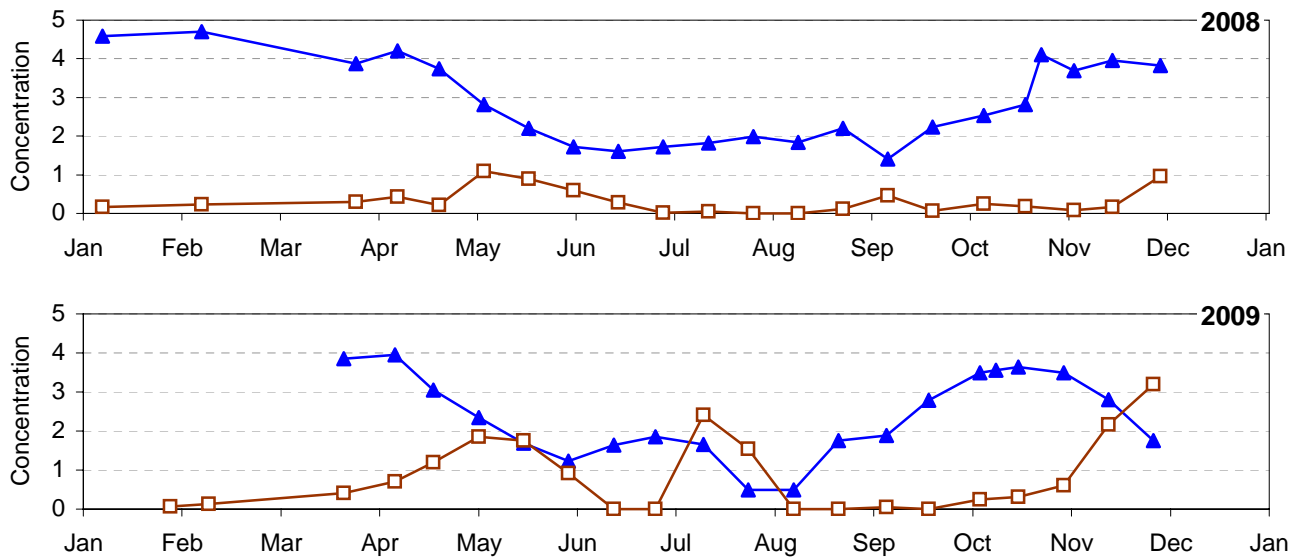
Silica detection level over time ranged from 0.2 mg/l to 0.5 mg/l

Silica results reported for sample depth = 0m



Library Reference 8.3.3

Silica and Diatoms over Time Onondaga Lake South Deep



Notes:

Concentration units mg/L (total dissolved Silica) and cm³/m³ (Diatoms biovolume).

Silica detection level over time ranged from 0.2 mg/l to 0.5 mg/l

Silica results reported for sample depth = 0m

