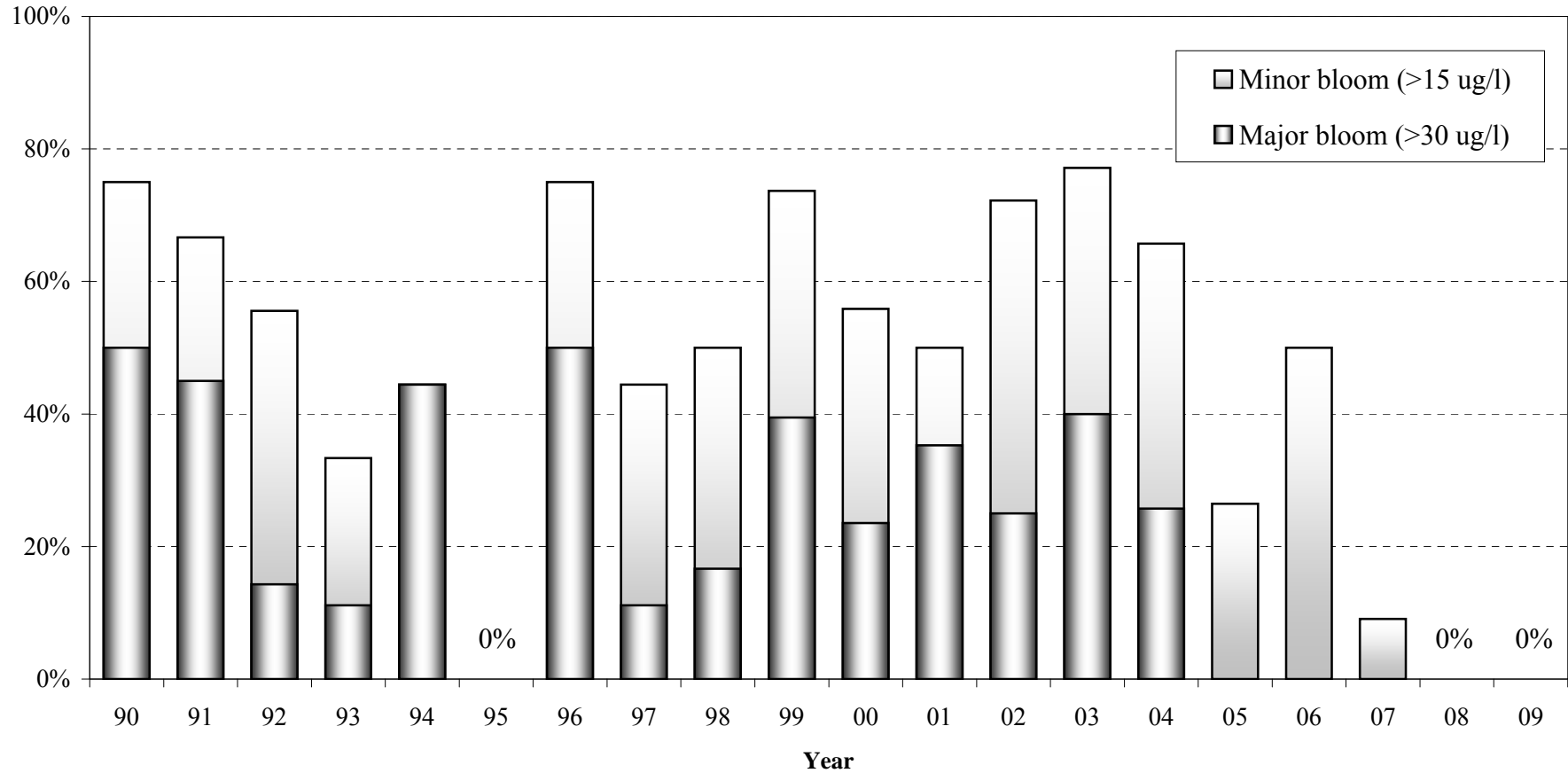


Library Reference 8.2.2



The percent of summer (June 1 to Sept 30) chlorophyll-a measurements that exceed algal bloom thresholds in Onondaga Lake are shown for the years 1990 to 2009. Nuisance bloom conditions are defined as chlorophyll-a concentrations greater than 30 $\mu\text{g/L}$. The concentration 15 $\mu\text{g/L}$ is considered to represent a threshold where the public may perceive impairment for recreational use of a lake.