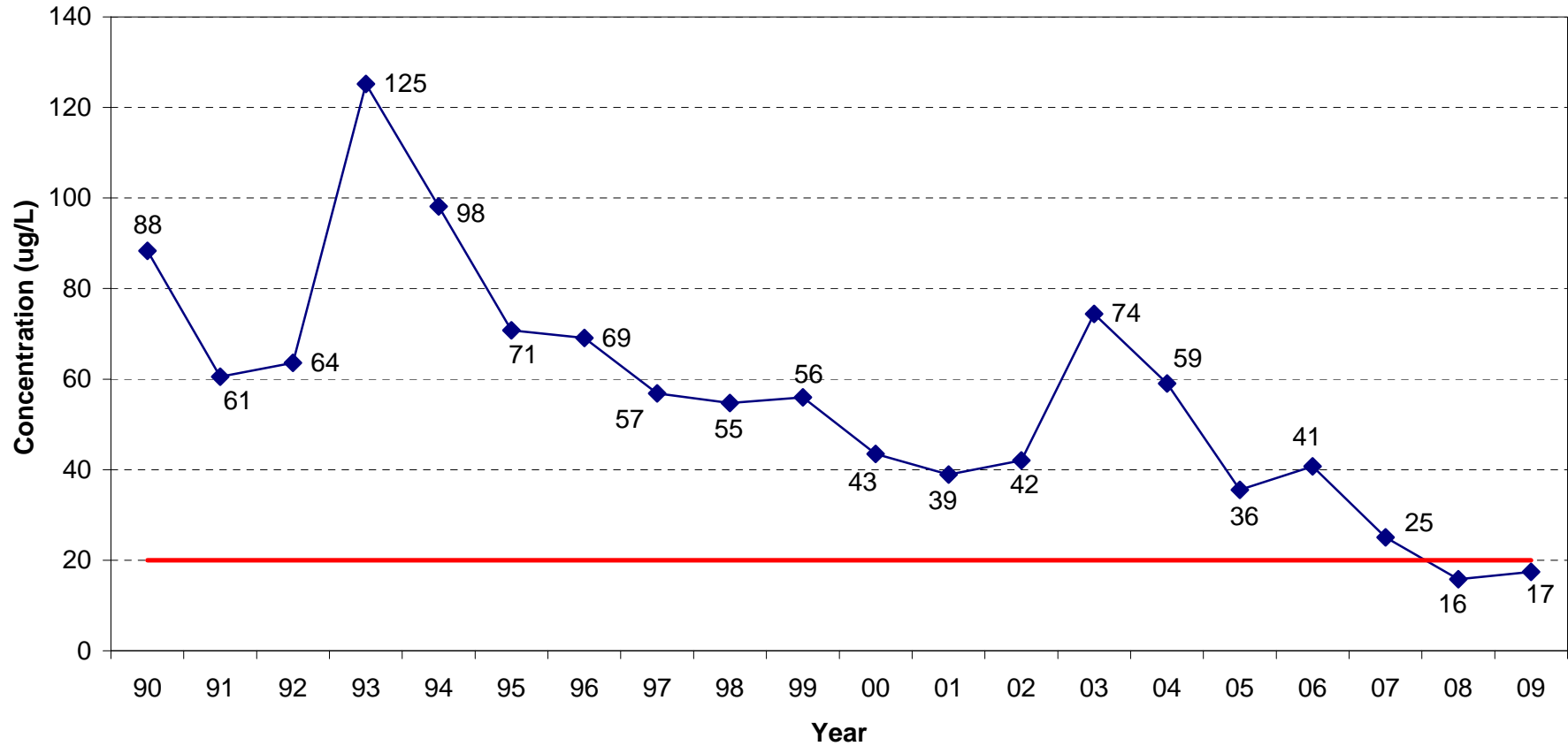


Library Reference 7.3



Average total phosphorus concentrations measured in Onondaga Lake at the South Deep station upper waters for the summer recreational period. Upper waters concentrations represent the averages of 0, 1 and 3m depth samples for each sample event from June 1 to September 30; these sample event averages are then averaged to calculate a summer upper waters average for each year. NY State guidance value for total phosphorus is 20 ug/L, selected to protect recreational uses.