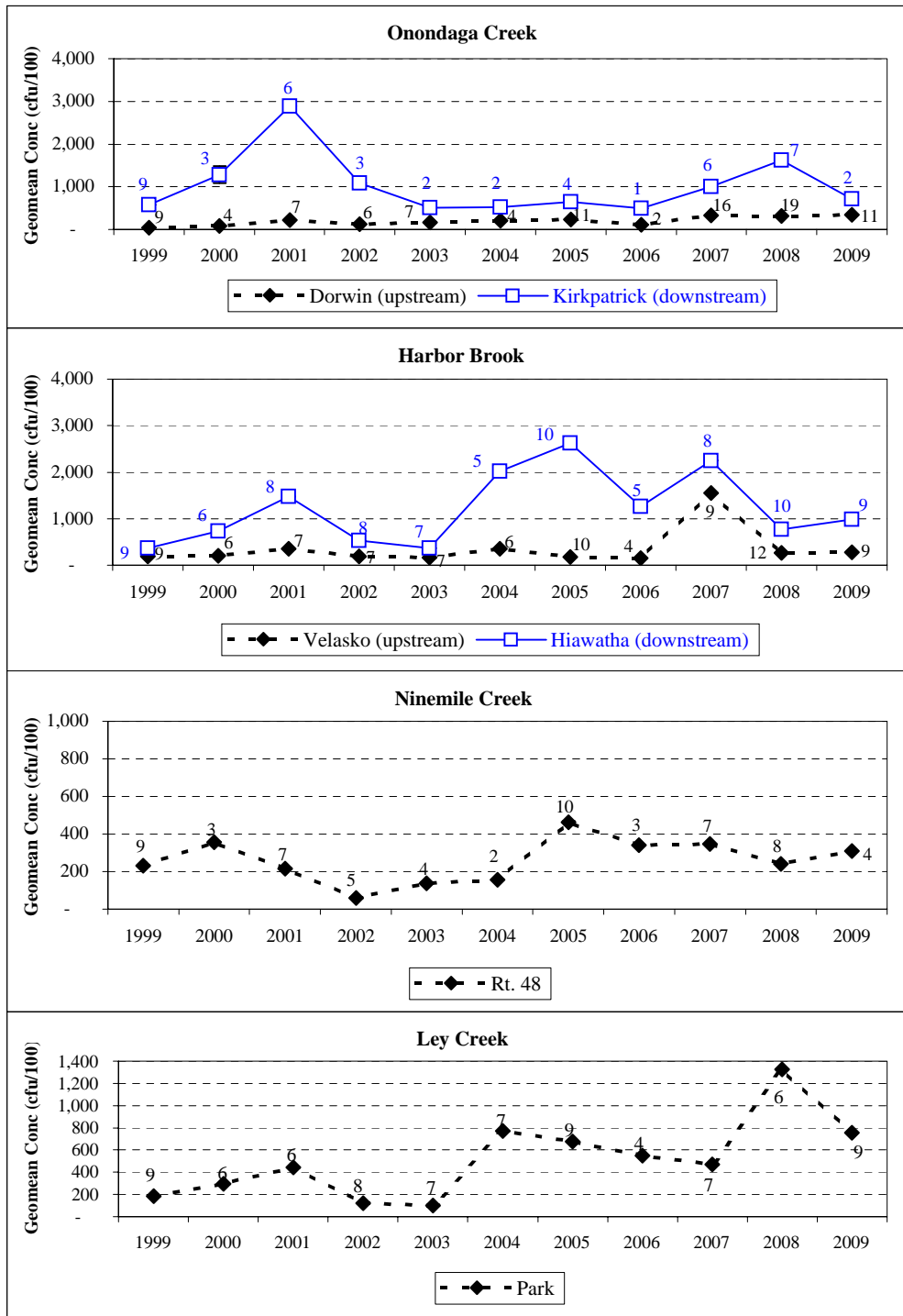


Library Reference 5.8.3



Geometric mean concentration, with standard deviation, of fecal coliform bacteria at base flow during summer (June to September) in Onondaga Lake tributaries. Number of samples per summer is shown. Base flow is defined as daily flow (cfs) at or less than the monthly average. (As there were no daily flows that met the base flow definition at Onondaga Creek Kirkpatrick site in 2000 and 2006, samples with flows less than 100 cfs were used.)