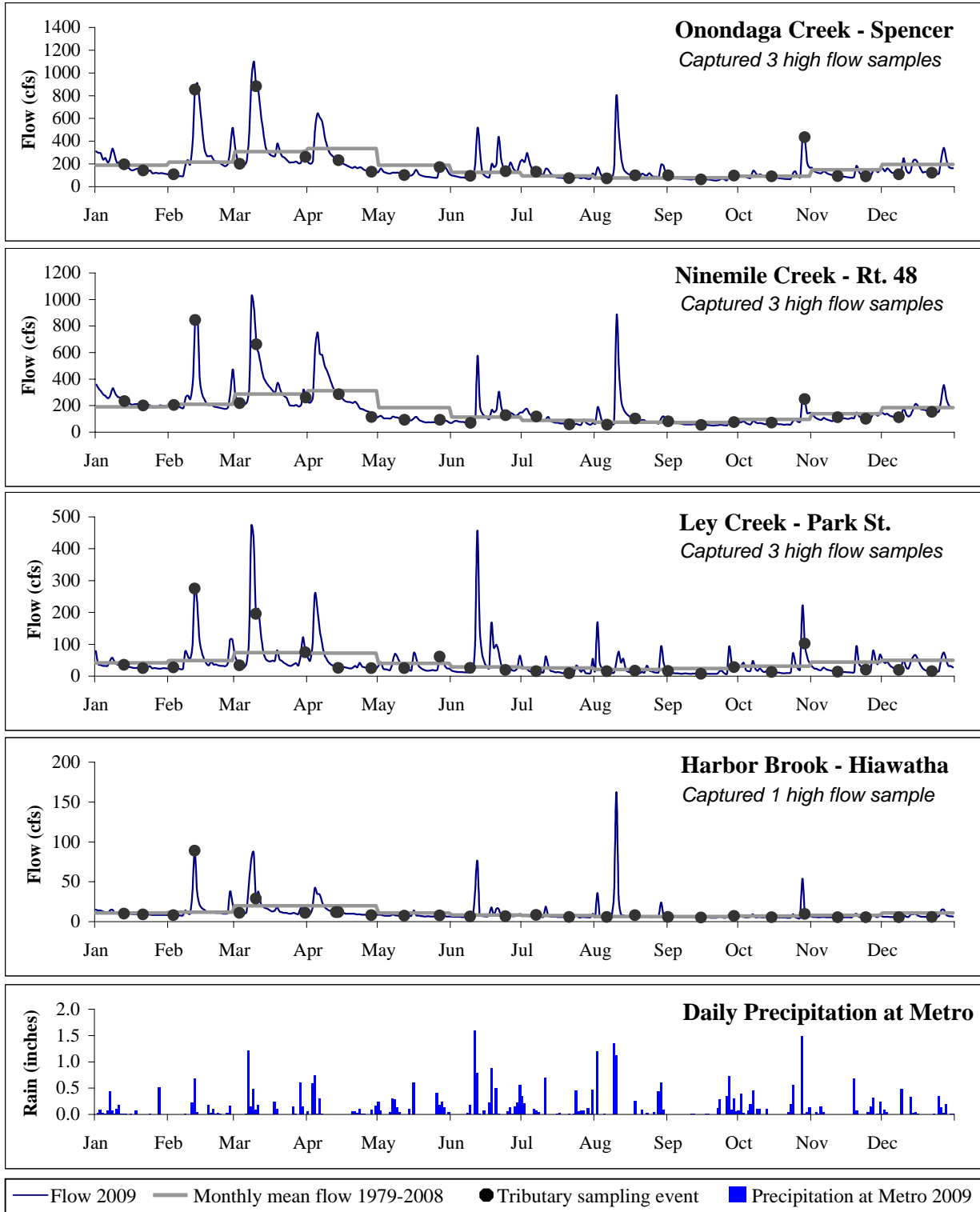


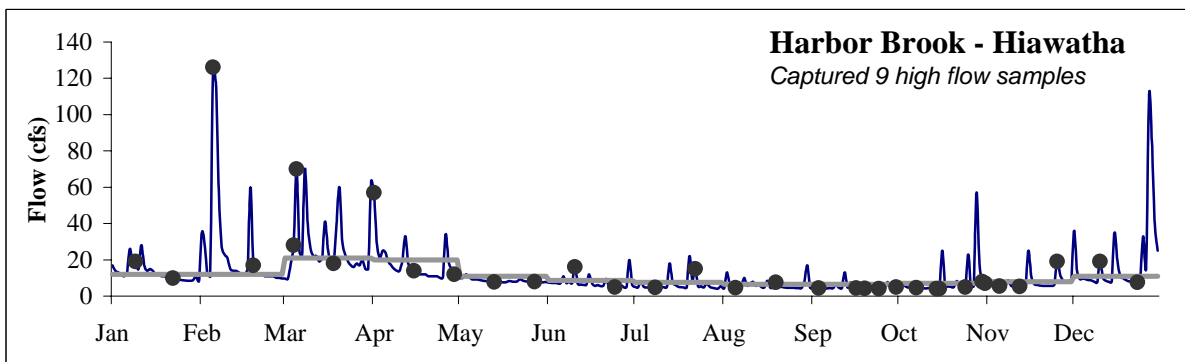
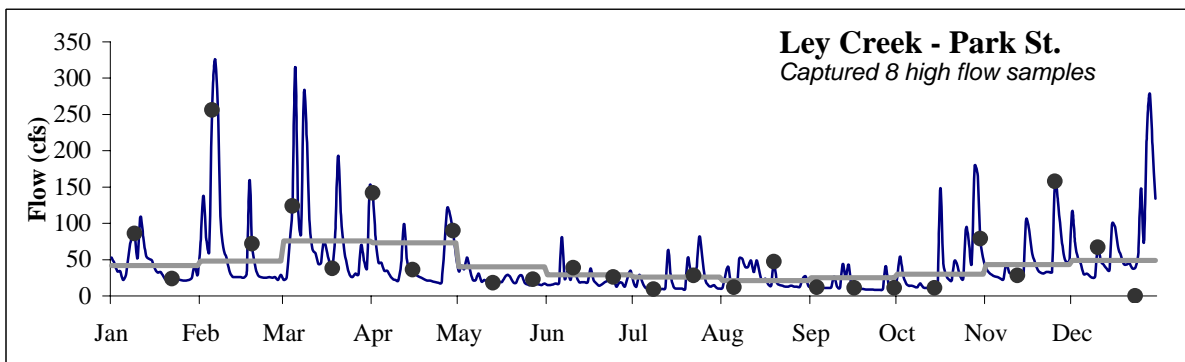
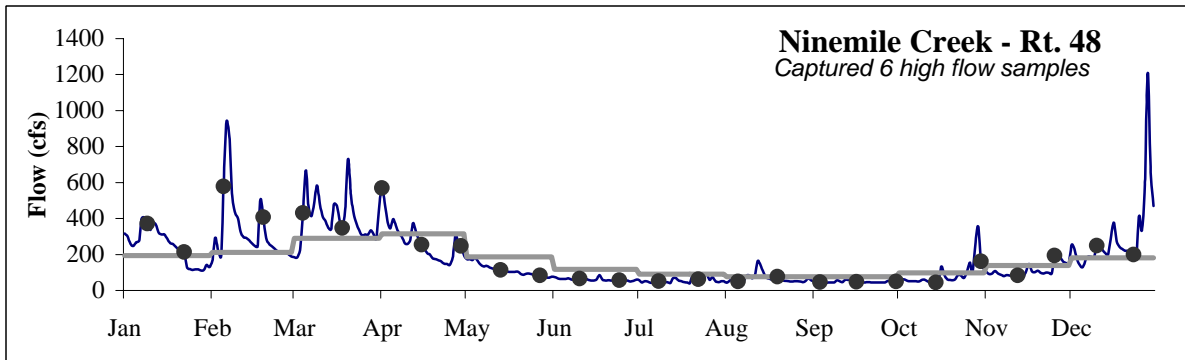
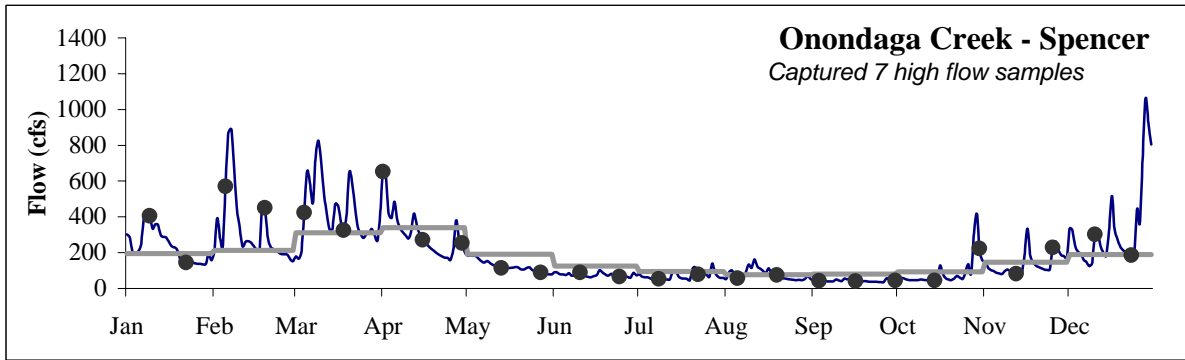
Library Reference 5.1



Hydrographs of the major tributaries to Onondaga Lake, showing observed tributary flows in 2009 compared with the 30-year average (1979-2008) USGS average flow record and Onondaga County sampling events. The goal is to sample the tributaries over a range of representative flow conditions, targeting a minimum of five samples collected during high flow (*High flow* is defined as one standard deviation above the long-term monthly average flow).

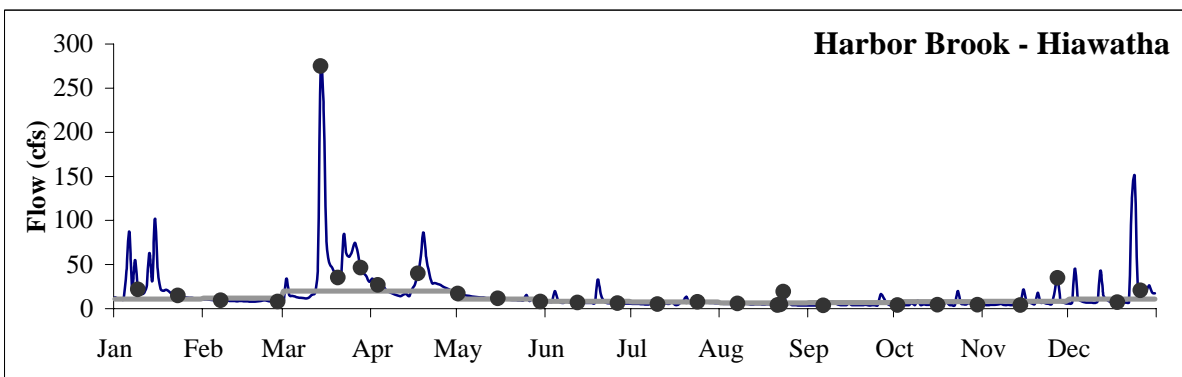
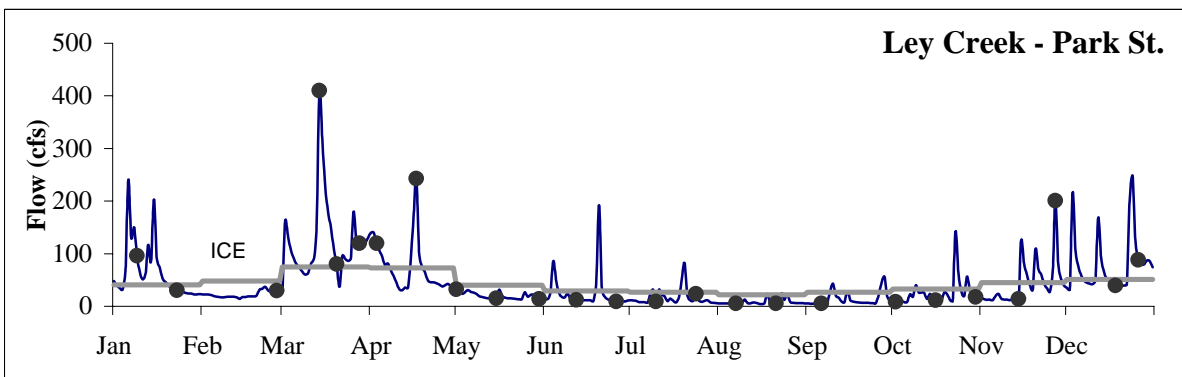
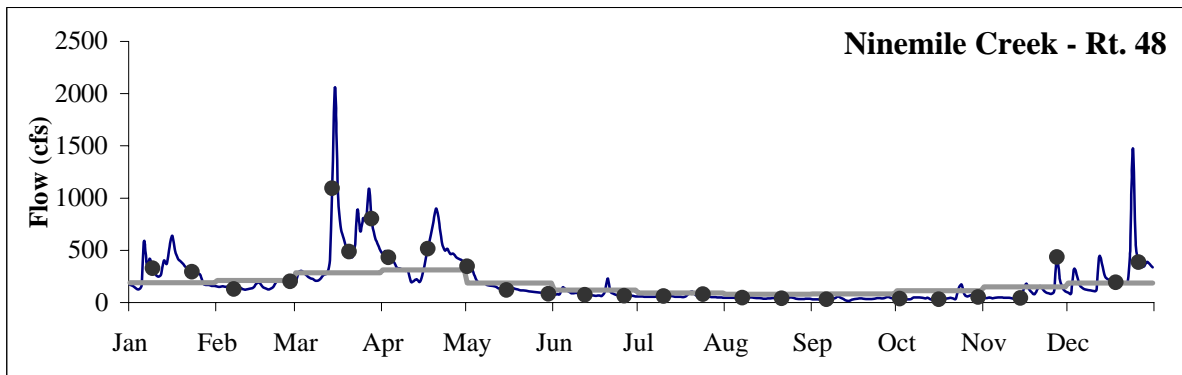
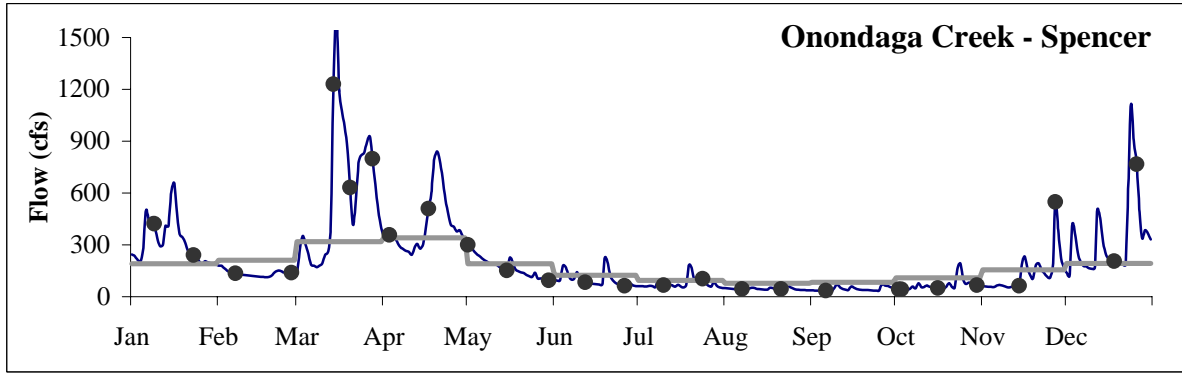
### Historical Tributary Flows with Sampling Events

The following graphics are provided for reference, and were previously presented in Annual Monitoring Program Reports dating back to 2002. The graphics represent seven years of stream hydrographs with markers indicating when sampling events took place.



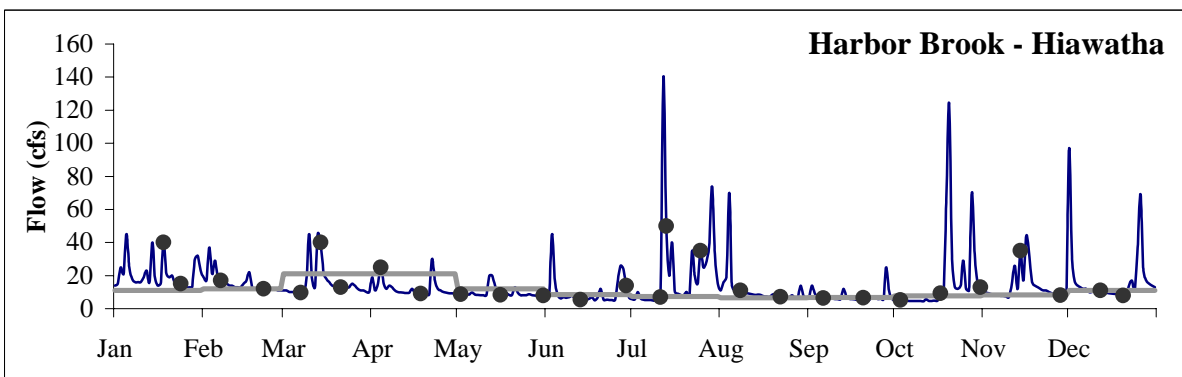
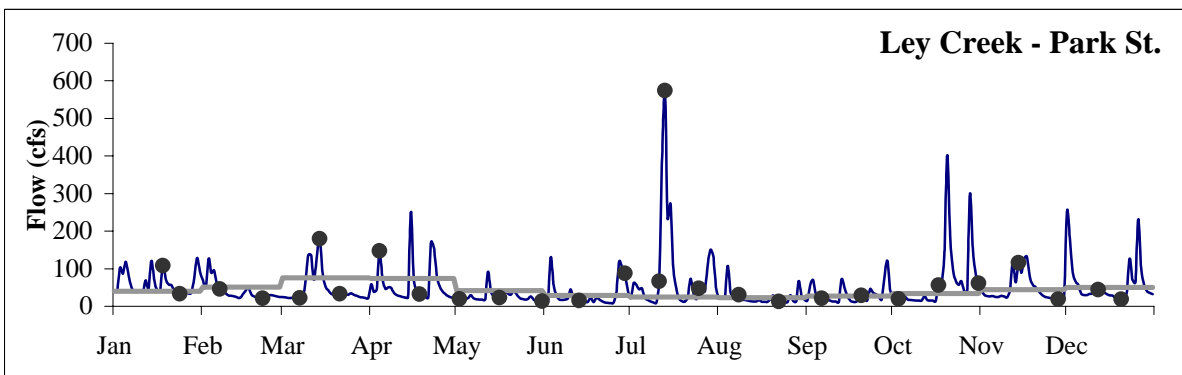
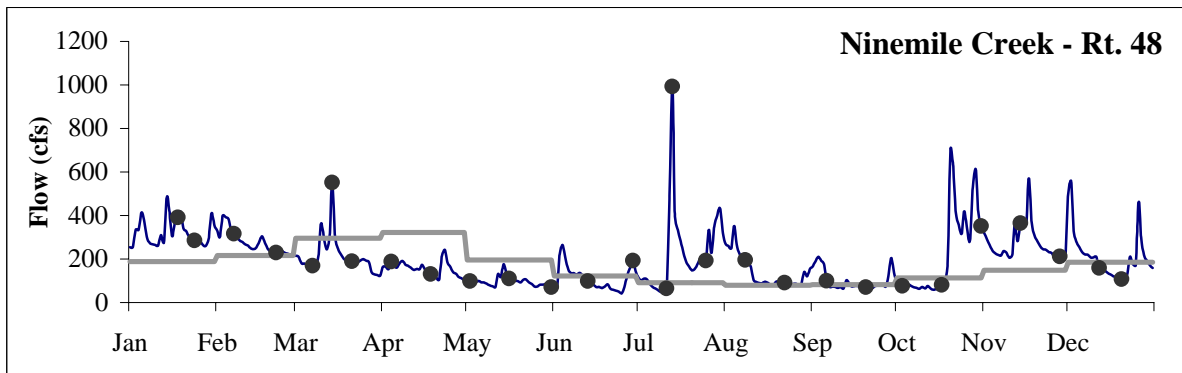
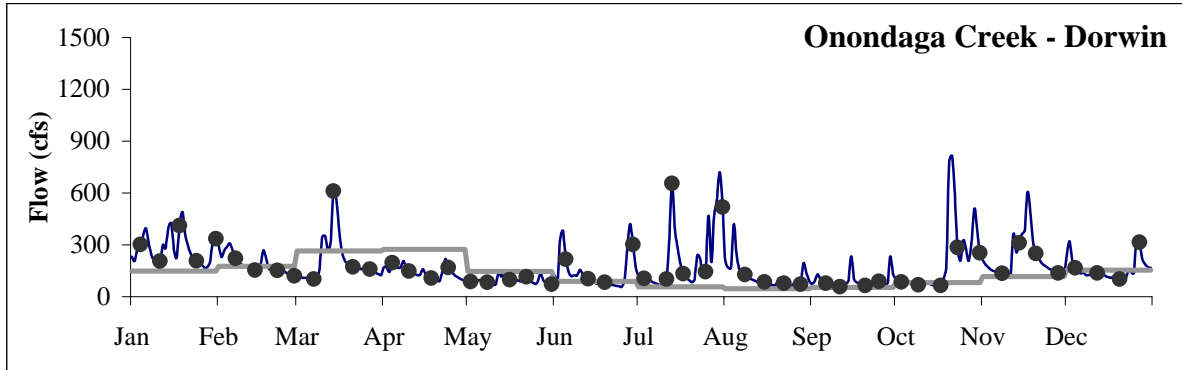
— Flow recorded in 2008      — Monthly mean flow 1978-2007      ● Tributary sampling event

Hydrographs of the major tributaries to Onondaga Lake, showing observed tributary flows in 2008 compared with the long-term (1978-2007) USGS average flow record and Onondaga County sampling events. The goal is to sample the tributaries over a range of representative flow conditions, targeting a minimum of five samples collected during high flow (one standard deviation above the long-term monthly average flow).



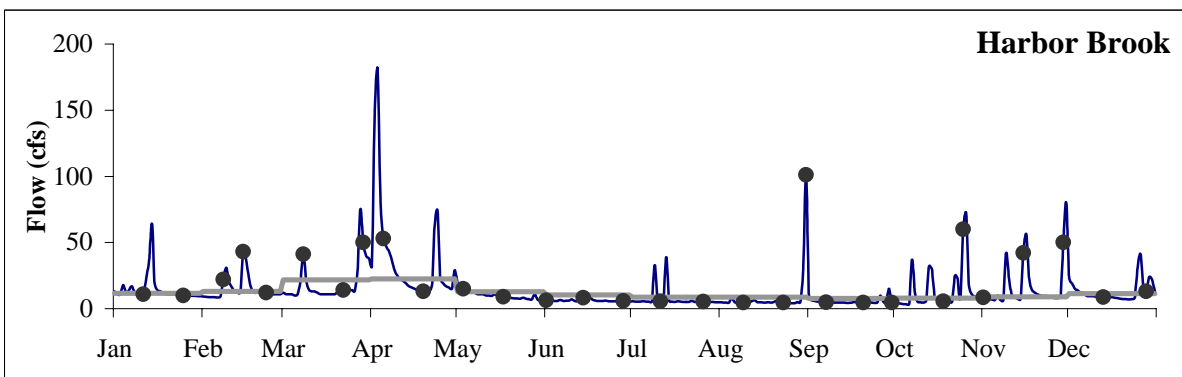
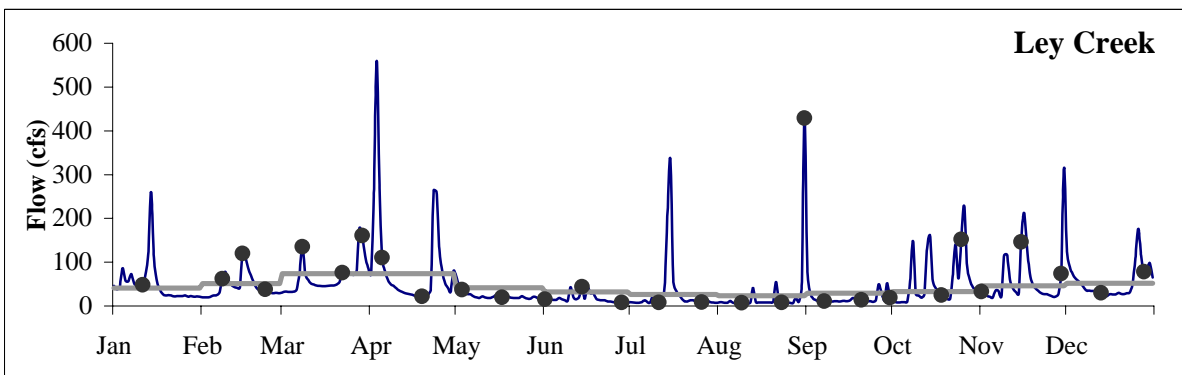
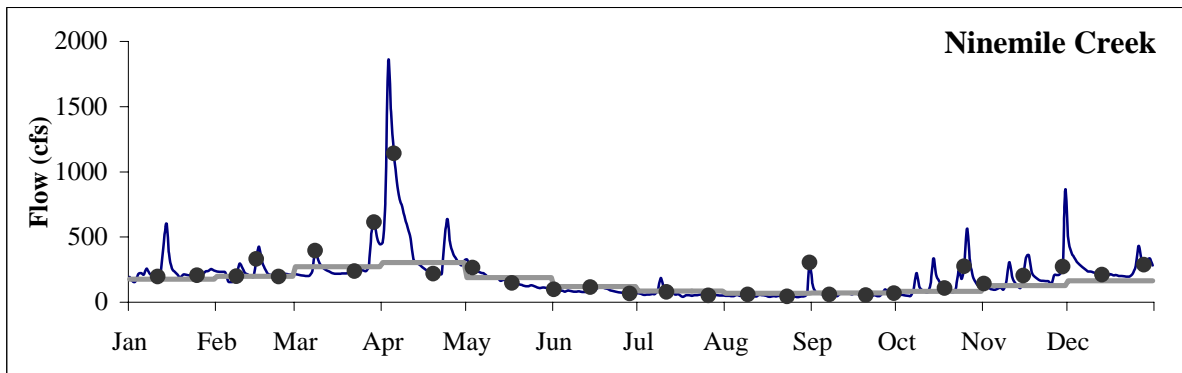
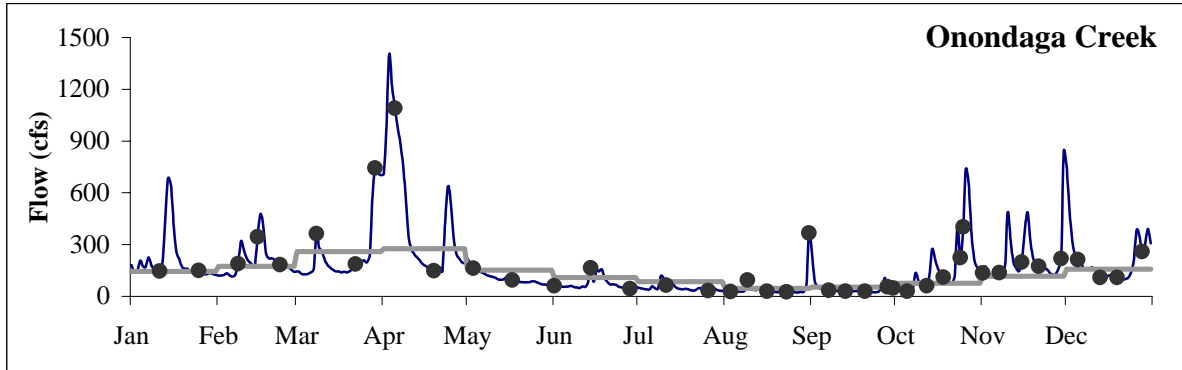
— Flow recorded in 2007      — Monthly mean flow 1977-2006      ● Tributary sampling event

Observed tributary flows in 2007 compared with the long-term (1977-2006) average flow record. USGS final data received from OCDWEP 04/23/2008.



— Flow recorded in 2006      — Monthly mean flow 1976-2005      ● Tributary sampling event

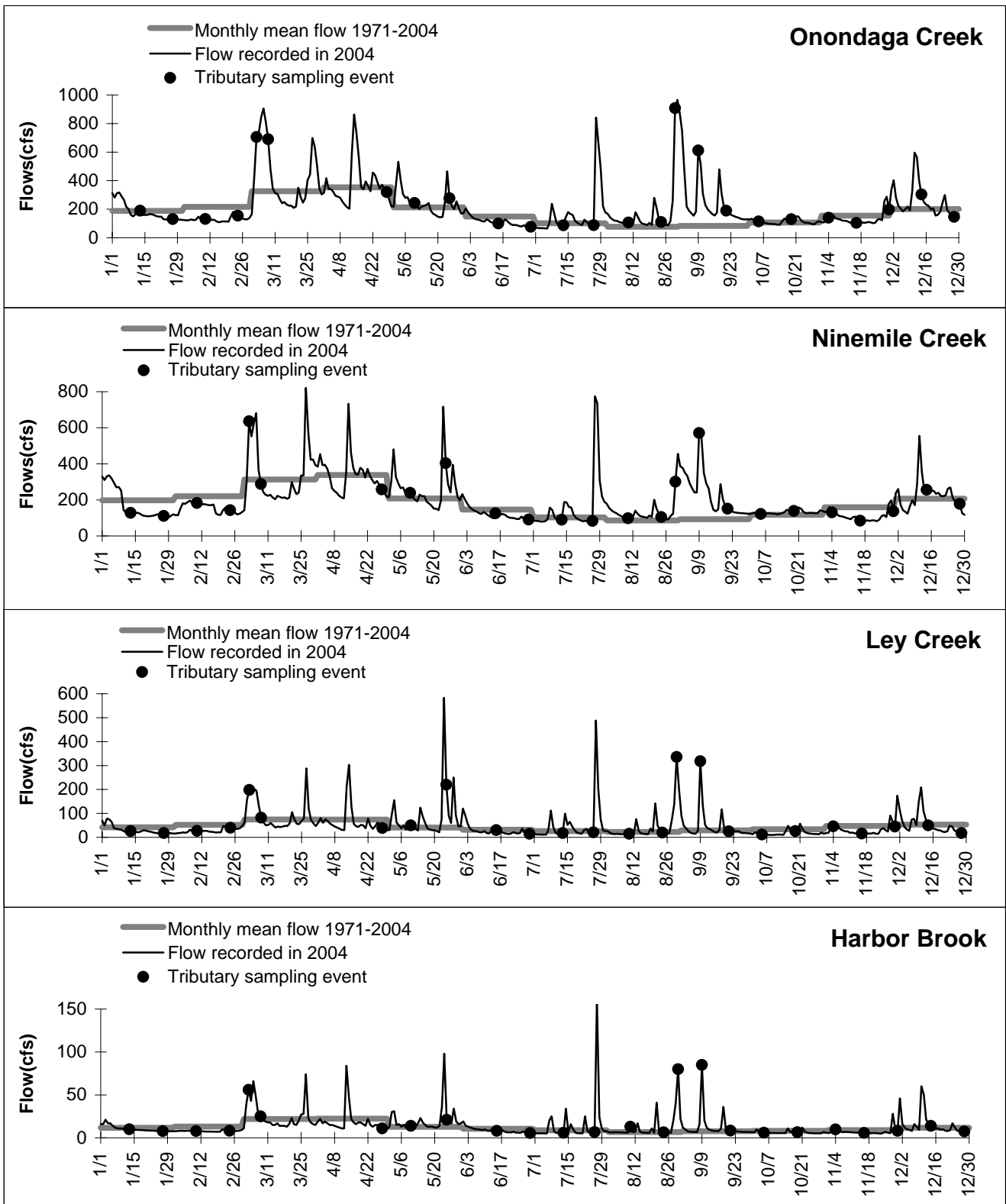
Observed tributary flows in 2006 compared with the long-term (1976-2005) average flow record. Onondaga Creek sample dates include those collected as part of the Midland RTF Dewater program.



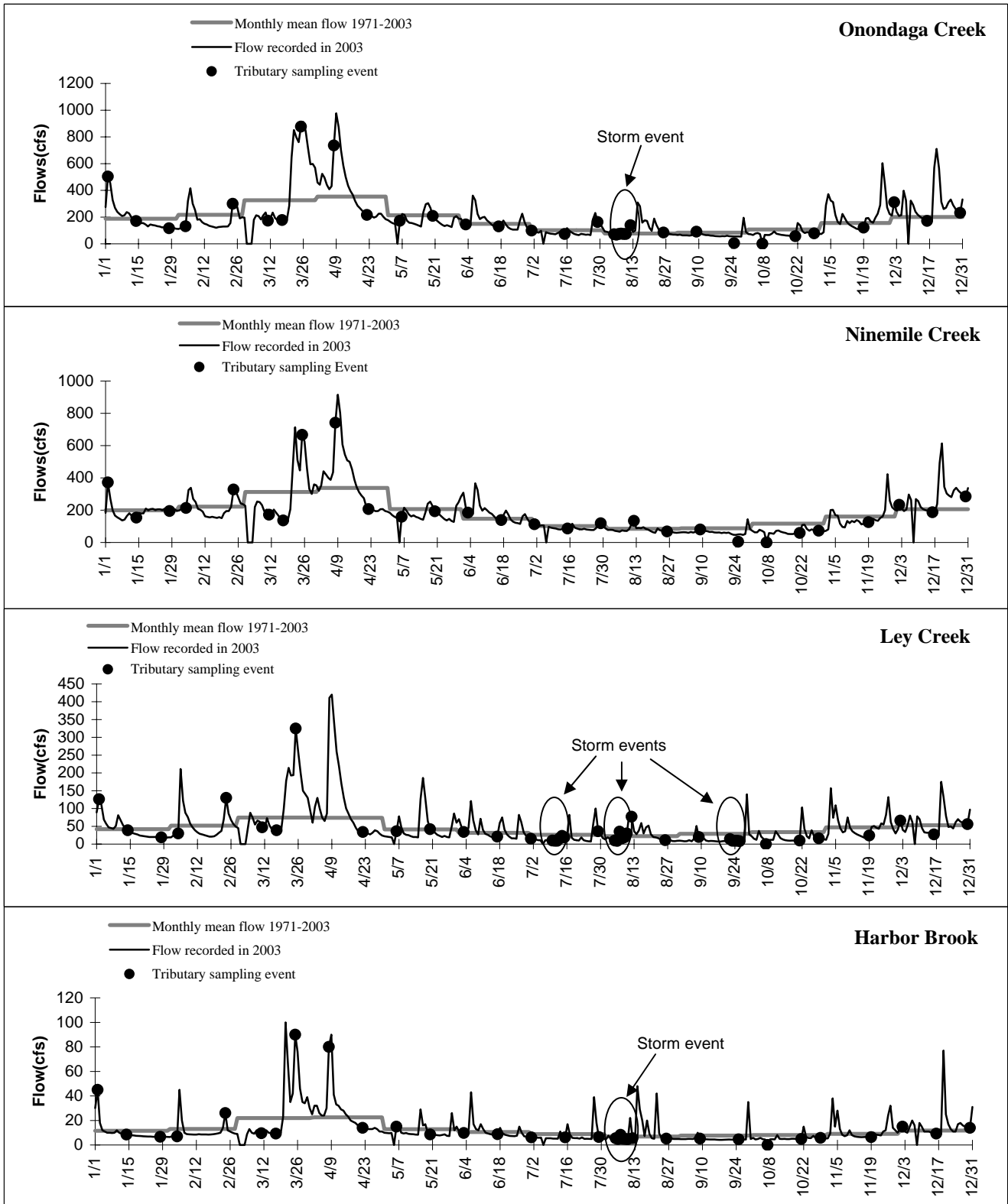
— Flow recorded in 2005      — Monthly mean flow 1970-2003\*      ● Tributary sampling event

Observed tributary flows in 2005 compared with the long-term average flow record.

Note: Long-term monthly means for Ninemile Creek are 1985-2004.

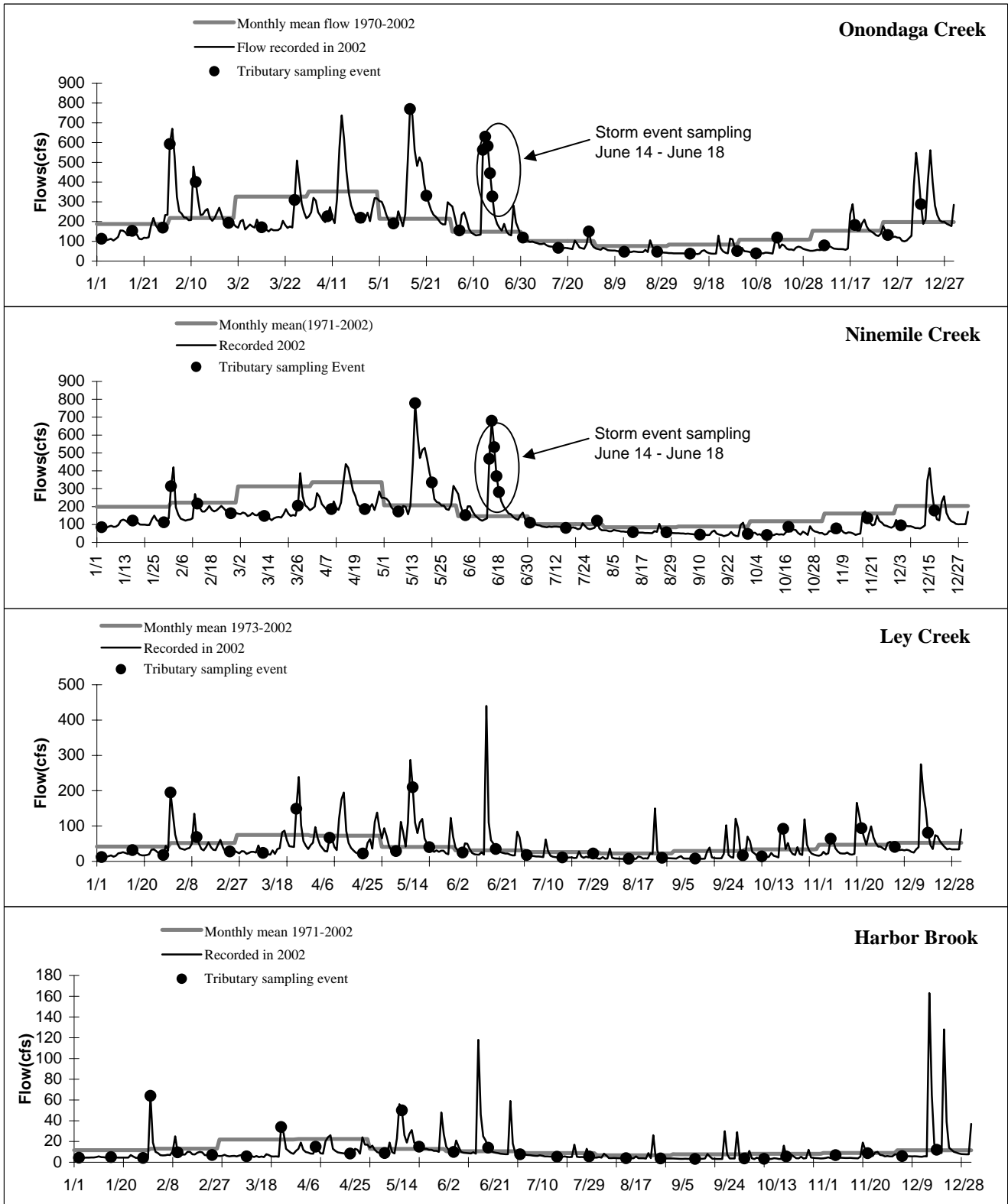


Observed tributary flows in 2004 compared with the long-term average flow record.



Observed tributary flows in 2003 compared with the long-term average flow record.





Observed tributary flows in 2002 compared with the long-term average flow record. (Source: USGS finalized/provisional 2002 water year flow data.)