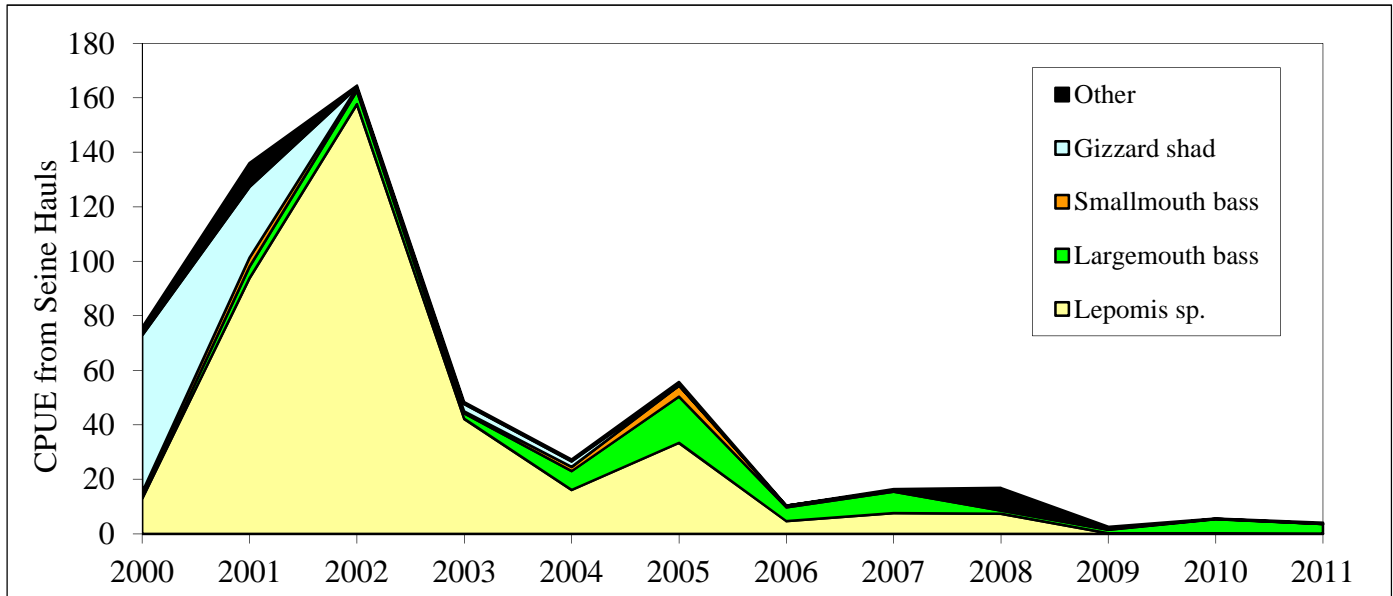


**Community structure of young-of-the-year captured in seine hauls in Onondaga Lake since 2000.**

Overall catch rates have declined markedly, mostly due to a decline in *Lepomis* sp. (mostly bluegill and pumpkinseed). The decline may be due to several reasons including: predation of larvae by alewives; increases in macrophyte growth allowing for greater dispersion of young; and decreased sampling efficiency due to increased macrophyte density.



**Graph Data - YOY mean CPUE (#/haul) for whole year**

Year	Lepomis sp.	Largemouth bass	Smallmouth bass	Gizzard shad	Other
2000	13	0.64	1.8	58	2.9
2001	94	4.3	3.3	26	8.7
2002	158	5.0	1.1	0.033	0.70
2003	42	1.9	0.70	2.7	0.77
2004	16	6.9	1.6	2.0	0.74
2005	33	17	4.0	0.022	1.3
2006	4.7	5.1	0.50	0	0.056
2007	7.7	7.8	0.53	0	0.37
2008	7.4	1.2	0.31	0.10	7.8
2009	0.16	1.4	0.18	0	0.80
2010	0.16	5.2	0.044	0	0.12
2011	0.05	3.52	0.06	0.12	0.39