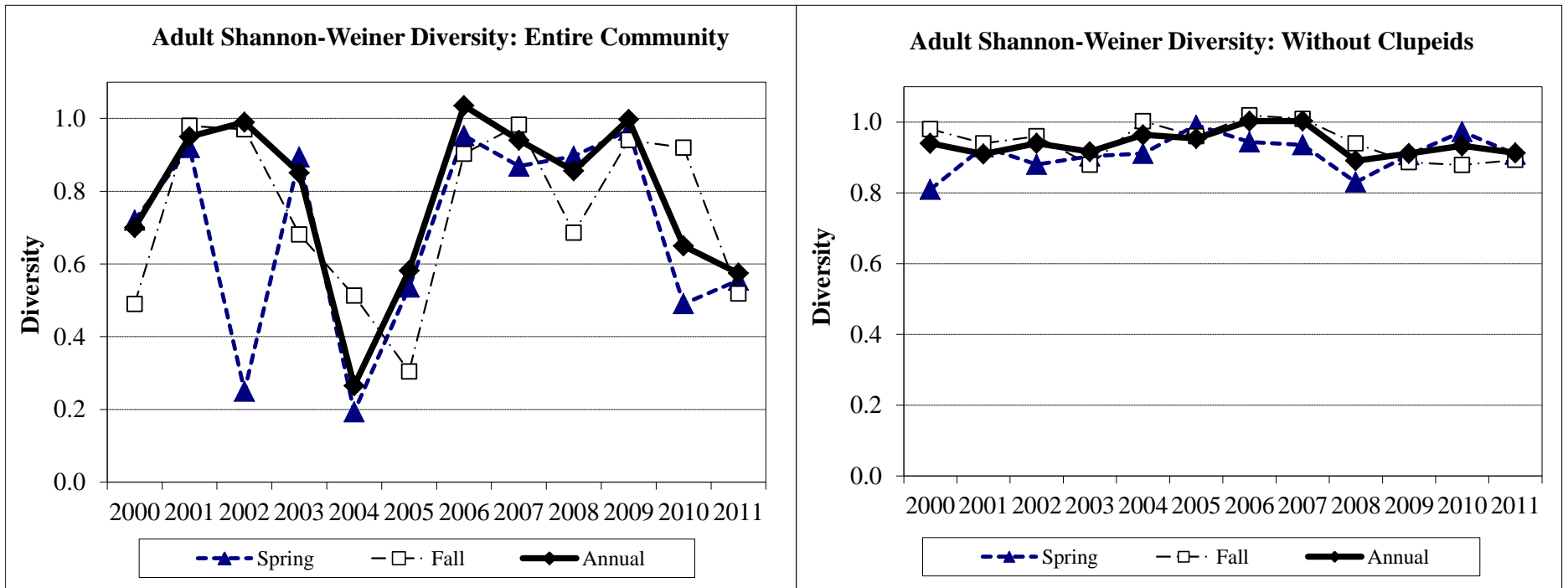


Figure A8-5. Electrofishing diversity in "all fish" transects from 2000-2011.



2000-2011 Trends

Diversity with Clupeids

Sample Period	2000	2001	2002	2003	2004	2005	2006	2007	2008	2009	2010	2011
Spring	0.72	0.92	0.25	0.89	0.19	0.54	0.95	0.87	0.90	0.97	0.49	0.56
Fall	0.49	0.98	0.97	0.68	0.51	0.30	0.90	0.98	0.69	0.94	0.92	0.52
Annual	0.7	0.95	0.99	0.85	0.27	0.58	1.04	0.94	0.86	1.00	0.65	0.57

Diversity without Clupeids

Sample Period	2000	2001	2002	2003	2004	2005	2006	2007	2008	2009	2010	2011
Spring	0.81	0.93	0.88	0.90	0.91	0.99	0.94	0.94	0.83	0.91	0.97	0.91
Fall	0.98	0.94	0.96	0.88	1.00	0.96	1.02	1.01	0.94	0.89	0.88	0.89
Annual	0.94	0.91	0.94	0.92	0.96	0.95	1.00	1.00	0.89	0.91	0.93	0.91