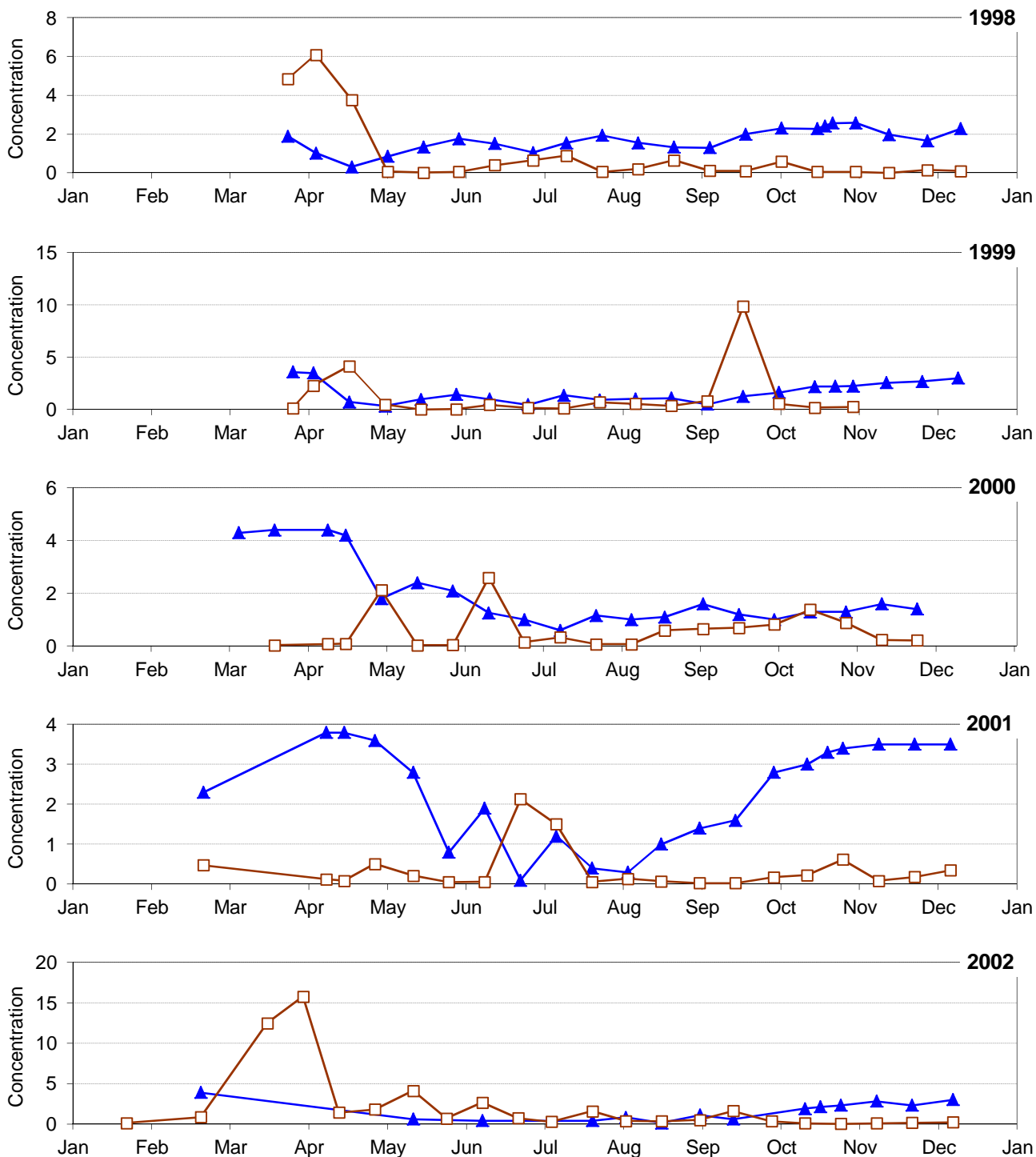


Silica and Diatoms, 1998-2011 Onondaga Lake South Deep

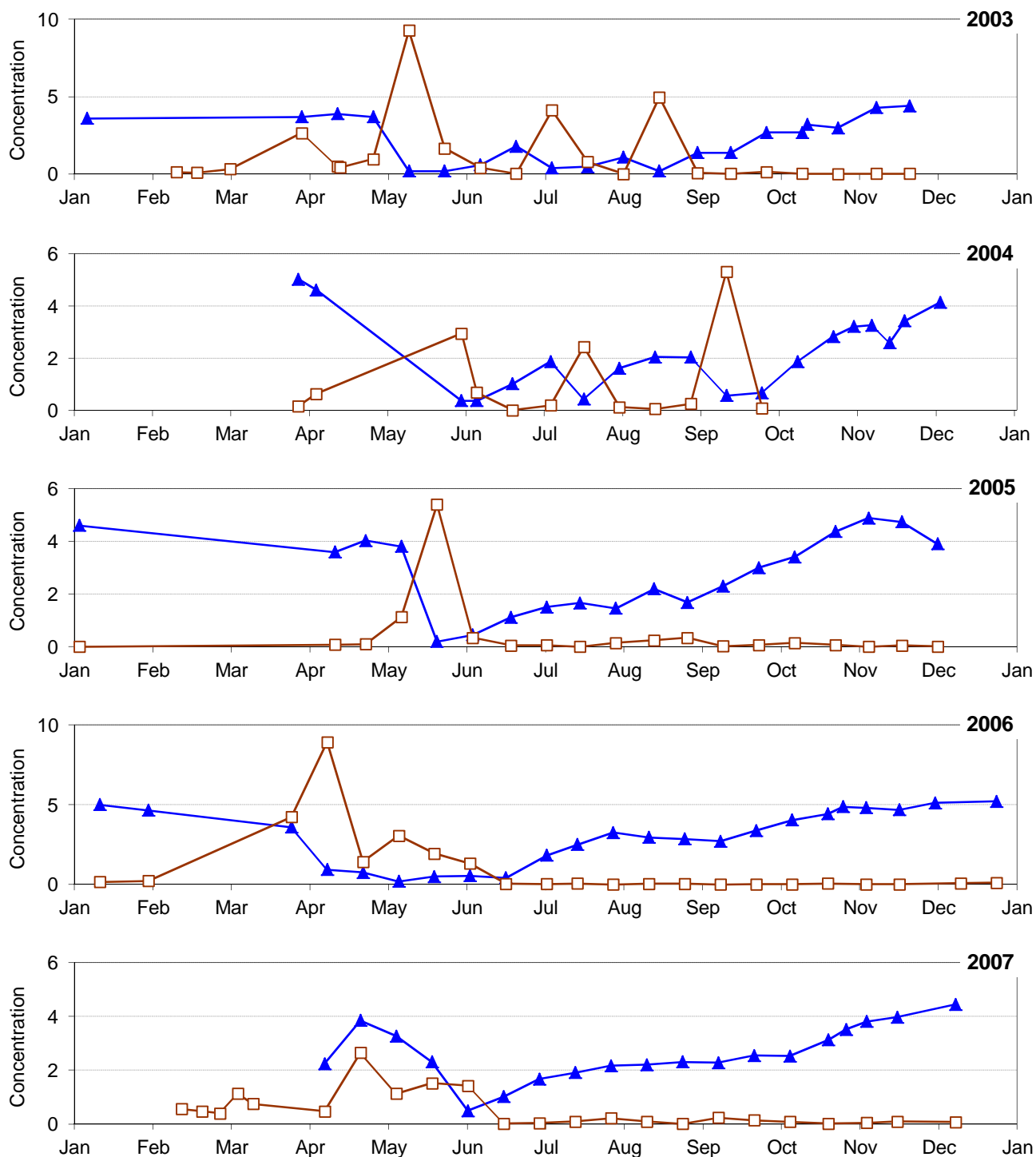


Notes:

Concentration units mg/L (total dissolved Silica) and cm^3/m^3 (Diatoms biovolume).
 Silica detection level over time ranged from 0.2 mg/l to 0.5 mg/l
 Silica results reported for sample depth = 0m



Silica and Diatoms, 1998-2011 Onondaga Lake South Deep

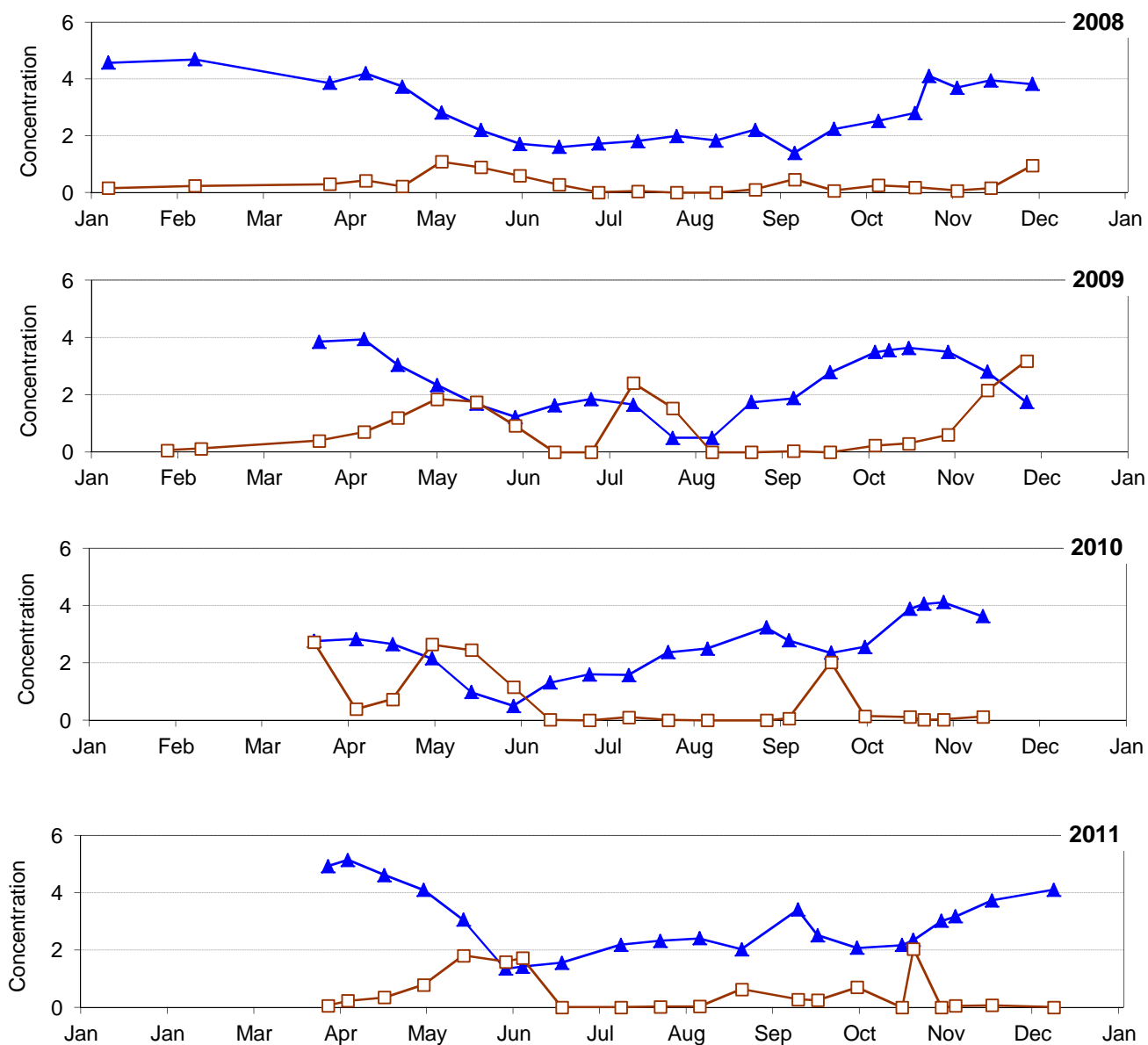


Notes:

Concentration units mg/L (total dissolved Silica) and cm³/m³ (Diatoms biovolume).
 Silica detection level over time ranged from 0.2 mg/l to 0.5 mg/l
 Silica results reported for sample depth = 0m



Silica and Diatoms, 1998-2011 Onondaga Lake South Deep



Notes:

Concentration units mg/L (total dissolved Silica) and cm³/m³ (Diatoms biovolume).
 Silica detection level over time ranged from 0.2 mg/l to 0.5 mg/l
 Silica results reported for sample depth = 0m

