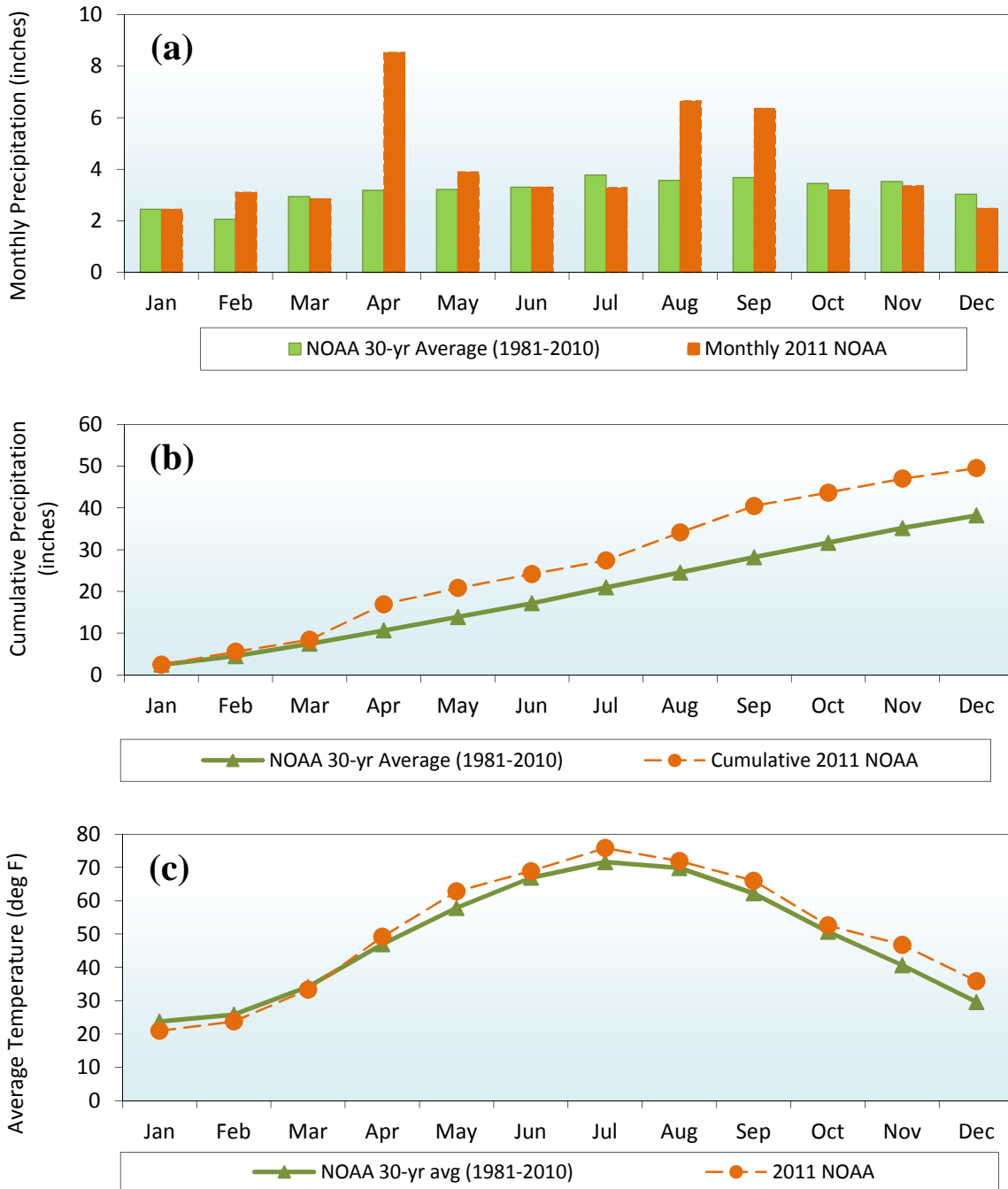


Library Reference 1.2



Time plots of NOAA Hancock Airport data for (a) bar chart of monthly 30 year historic average (1981 - 2010) percipitations compaired to 2011 monthly average precipitation, (b) cumulative time plot of NOAA 30 year historic average (1981 - 2010) monthly percipitations compaired to 2011 monthly averages (c) monthly air temperatures from 2011 compaired to the 30-year average monthly air temperatures. Note a wet spring and late summer lead (a and b) to a 11.3 inch surplus of precipitation by the end of 2011. 2011 air temperatures compaired well to the 30 year averages.