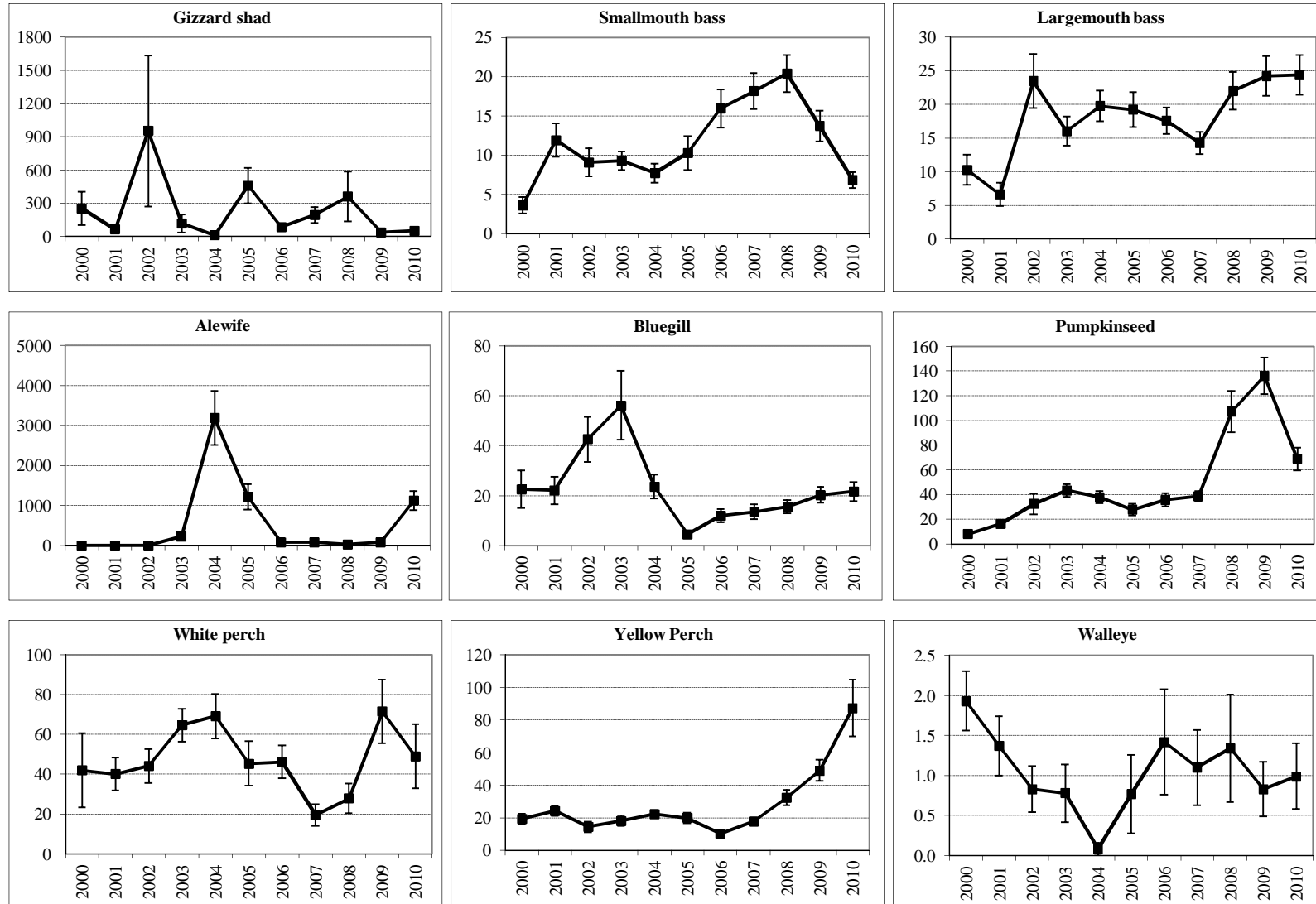


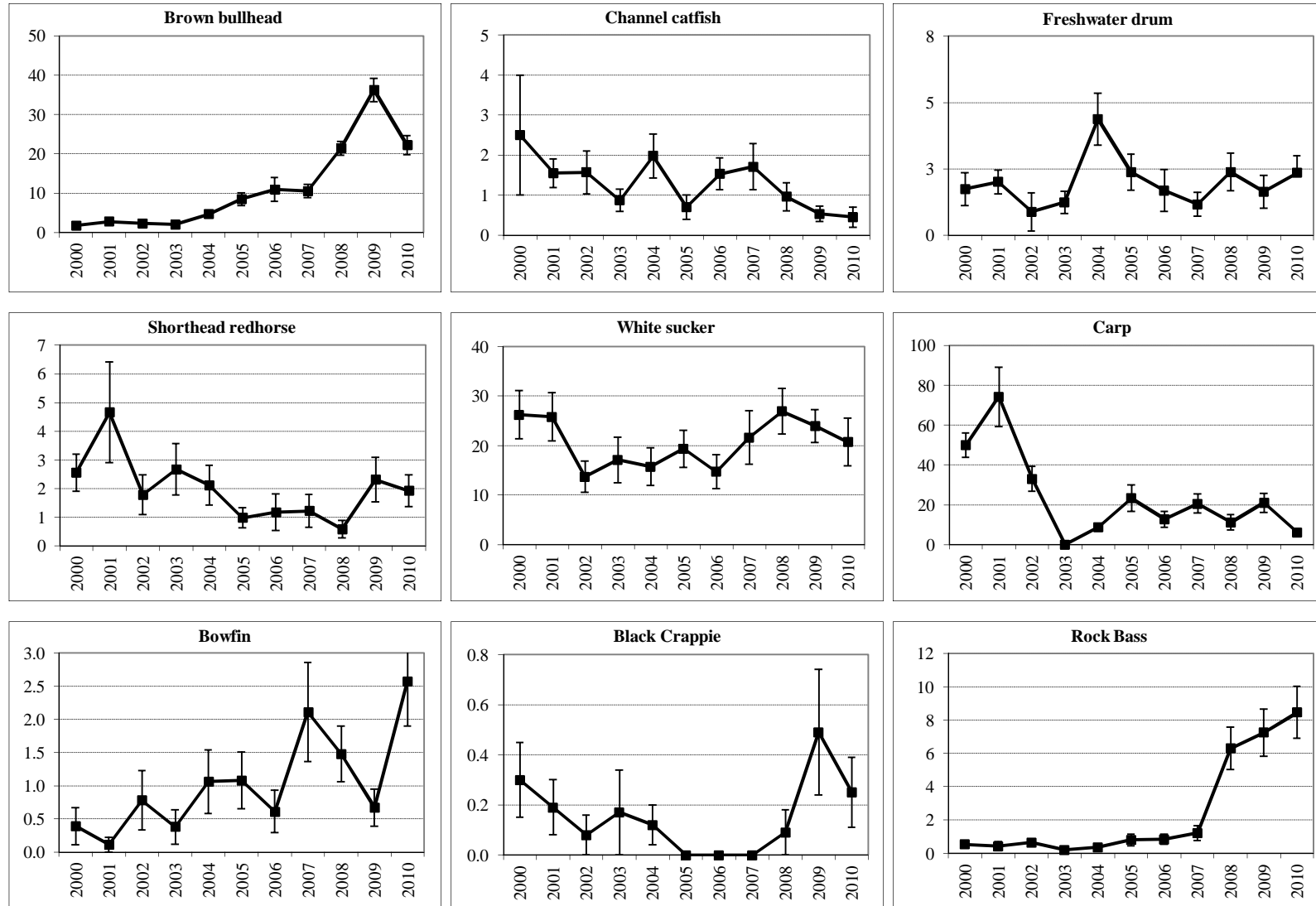
Trends in annual mean CPUE (catch per hour) of select species caught by electrofishing from 2000-2010.

Note: CPUE for gamefish (bolded) is calculated from all 24 transects. CPUE for non-gamefish are calculated from only the one-half of the transects where all fish are collected (every other transect). Because of the difficulty in netting clupeids (shad and alewives), the CPUE for these species is calculated from a combination of fish that are boated and estimates of the number of fish missed. Because of their large size carp are not boated, instead carp within netting distance are counted while still in the water. Note: Y-axis differs for each species.



Trends in annual mean CPUE (catch per hour) of select species caught by electrofishing from 2000-2010 (continued).

Note: CPUE for gamefish (bolded) is calculated from all 24 transects. CPUE for non-gamefish are calculated from only the one-half of the transects where all fish are collected (every other transect). Because of the difficulty in netting clupeids (shad and alewives), the CPUE for these species is calculated from a combination of fish that are boated and estimates of the number of fish missed. Because of their large size carp are not boated, instead carp within netting distance are counted while still in the water. Note: Y-axis differs for each species.



Trends in annual mean CPUE (catch per hour) of select species caught by electrofishing from 2000-2010 (continued).

Note: CPUE for gamefish (bolded) is calculated from all 24 transects. CPUE for non-gamefish are calculated from only the one-half of the transects where all fish are collected (every other transect). Because of the difficulty in netting clupeids (shad and alewives), the CPUE for these species is calculated from a combination of fish that are boated and estimates of the number of fish missed. Because of their large size carp are not boated, instead carp within netting distance are counted while still in the water.

CPUE

Common name	2000	2001	2002	2003	2004	2005	2006	2007	2008	2009	2010
Gizzard shad	252	63.1	952	117	9.70	456	84.3	195	359	36.2	49.3
Bluegill	22.6	22.1	42.6	56.2	23.5	4.48	12.0	13.5	15.6	20.3	21.7
Pumpkinseed	8.04	16.2	32.4	43.3	37.8	27.7	35.6	38.7	107	136	69
White perch	42.0	40.1	44.1	64.6	69.2	45.4	46.2	19.4	27.9	71.5	49.0
Carp	49.9	74.2	33.0	0	8.83	23.3	12.8	20.6	11.2	21.0	6.2
Largemouth bass	10.3	6.61	23.5	16.0	19.8	19.2	17.6	14.2	22.0	24.2	24.4
Yellow perch	19.4	24.4	14.5	18.0	22.2	19.9	10.3	17.9	32.3	49.1	87.3
Smallmouth bass	3.60	11.9	9.07	9.27	7.69	10.3	15.9	18.1	20.4	13.7	6.8
White sucker	26.2	25.8	13.7	17.1	15.8	19.4	14.7	21.7	26.9	24.0	20.7
Brown bullhead	1.82	2.78	2.32	2.01	4.66	8.48	11.0	10.5	21.4	36.3	22.2
Channel catfish	2.50	1.55	1.57	0.870	1.98	0.700	1.53	1.71	0.960	0.530	0.450
Walleye	1.93	1.37	0.830	0.780	0.080	0.770	1.42	1.10	1.34	0.830	0.990
Shorthead redhorse	2.55	4.66	1.78	2.67	2.12	0.980	1.17	1.22	0.580	2.31	1.92
Bowfin	0.390	0.110	0.780	0.380	1.06	1.08	0.610	2.11	1.48	0.670	2.570
Alewife	0	0.640	2.13	228	3,190	1,217	78.7	74.4	21.2	76.7	1118
Rock bass	0.540	0.430	0.640	0.210	0.370	0.800	0.840	1.21	6.30	7.25	8.46
Freshwater drum	1.83	2.11	0.930	1.31	4.58	2.50	1.77	1.23	2.50	1.72	2.47
Longnose gar	0.370	0.110	0.570	0	0.510	1.18	0.310	2.30	0.170	0.700	1.010
Northern pike	0.180	0.140	0.180	0.210	0.100	0.200	0.300	0.200	0.480	0.690	0.680
Rainbow trout	0	0	0.110	0	0	0	0	0	0	0	0
Northern hog sucker	0.250	0	0.180	0	0	0	0.180	0.380	0.410	0.300	0.200
Logperch	0.230	0.280	0.210	0.190	0.200	0	0	0	0	0	0
Black crappie	0.300	0.190	0.080	0.170	0.120	0	0	0	0.090	0.490	0.250
Tiger muskellunge	0	0.080	0	0	0.080	0.190	0	0	0	0	0
Golden shiner	0.510	0	0.340	0.630	1.21	1.16	4.08	0.610	4.34	18.9	19.6
Banded killifish	0.120	0	0	0.180	0.310	0	0	0	0	0.690	0.770
Black bullhead	0	0	0	0	0	0	0.190	0	0	0.090	0.000
Quillback	0	0	0	0	0	0	0.150	0	0	0.170	0.000
Brown trout	0.060	0	0	0	0.080	0.200	0.120	0	0.100	0	0
Emerald shiner	0	0	0	0	0	0	0.500	0	0	0	0
Greater Redhorse	0	0	0	0	0	0.180	0	0	0	0	0
Rudd	0	0	0	0	0	0.170	0	0.230	0	0	0
Yellow bullhead	0	0	0	0	0.080	0.090	0	0	0.090	0.570	0.680
Brook Silverside	0	0	0.480	0	0	0	0	0	0	0	0.18
Bullhead (species unknown)	0	0	0.100	0	0	0	0	0	0	0	0
Goldfish	0	0	0	0	0.190	0	0	0	0	0	0
<i>Lepomis sp.</i>	0	0	0	0	0	0	0	0	0	0.160	0.000
Chain pickerel	0	0	0	0	0	0	0	0	0	0.070	0.000

Standard Error of CPUE

Common name	2000	2001	2002	2003	2004	2005	2006	2007	2008	2009	2010
Gizzard shad	149	31.4	683	83.2	4.93	160	31.4	72.1	224	13.8	17.7
Bluegill	7.55	5.57	9.07	13.8	4.79	0.980	2.60	2.90	2.62	3.23	3.81
Pumpkinseed	2.22	2.45	8.43	5.31	4.77	4.57	5.26	4.27	16.8	14.9	9.2
White perch	18.7	8.17	8.57	8.16	11.3	11.2	8.33	5.45	7.55	16.0	16.1
Carp	6.06	14.8	6.23	0	1.57	6.60	4.00	4.79	3.86	4.76	1.96
Largemouth bass	2.21	1.74	4.01	2.16	2.31	2.60	1.97	1.66	2.79	2.96	2.97
Yellow perch	2.98	3.11	3.23	2.83	2.44	3.26	1.68	2.45	4.72	6.49	17.41
Smallmouth bass	1.05	2.12	1.78	1.21	1.22	2.15	2.43	2.31	2.37	1.95	1.00
White sucker	4.85	4.88	3.18	4.58	3.77	3.78	3.40	5.44	4.56	3.34	4.80
Brown bullhead	0.430	0.710	0.630	0.500	0.800	1.65	2.99	1.70	1.78	2.99	2.4
Channel catfish	1.50	0.360	0.540	0.280	0.550	0.300	0.400	0.580	0.350	0.190	0.250
Walleye	0.370	0.370	0.290	0.360	0.080	0.490	0.660	0.470	0.670	0.340	0.410
Shorthead redhorse	0.650	1.75	0.690	0.900	0.690	0.350	0.640	0.580	0.310	0.780	0.550
Bowfin	0.280	0.110	0.450	0.260	0.480	0.430	0.320	0.750	0.420	0.280	0.670
Alewife	0	0.350	0.960	105	672	316	20.2	48.3	9.84	24.0	236.8
Rock bass	0.170	0.260	0.210	0.140	0.170	0.350	0.300	0.440	1.26	1.42	1.56
Freshwater drum	0.650	0.470	0.750	0.440	1.03	0.710	0.830	0.470	0.740	0.640	0.660
Longnose gar	0.370	0.110	0.570	0	0.280	0.490	0.310	1.43	0.170	0.300	0.630
Northern pike	0.100	0.100	0.120	0.140	0.100	0.200	0.170	0.200	0.230	0.230	0.270
Rainbow trout	0	0	0.110	0	0	0	0	0	0	0	0
Northern hog sucker	0.170	0	0.180	0	0	0	0.180	0.260	0.280	0.200	0.200
Logperch	0.150	0.280	0.210	0.190	0.200	0	0	0	0	0	0
Black crappie	0.150	0.110	0.080	0.170	0.080	0	0	0	0.090	0.250	0.140
Tiger muskellunge	0	0.080	0	0	0.080	0.130	0	0	0	0	0
Golden shiner	0.400	0	0.230	0.470	0.520	0.680	1.70	0.320	1.56	4.50	5.89
Banded killifish	0.120	0	0	0.180	0.210	0	0	0	0	0.470	0.770
Black bullhead	0	0	0	0	0	0	0.130	0	0	0.090	0
Quillback	0	0	0	0	0	0	0.150	0	0	0.170	0
Brown trout	0.060	0	0	0	0.080	0.140	0.120	0	0.100	0	0
Emerald shiner	0	0	0	0	0	0	0.350	0	0	0	0
Greater Redhorse	0	0	0	0	0	0.180	0	0	0	0	0
Rudd	0	0	0	0	0	0.170	0	0.230	0	0	0
Yellow bullhead	0	0	0	0	0.080	0.090	0	0	0.090	0.250	0.290
Brook Silverside	0	0	0.340	0	0	0	0	0	0	0	0.18
Bullhead (species unknown)	0	0	0.100	0	0	0	0	0	0	0	0
Goldfish	0	0	0	0	0.190	0	0	0	0	0	0
<i>Lepomis sp.</i>										0.160	
Chain pickerel										0.070	