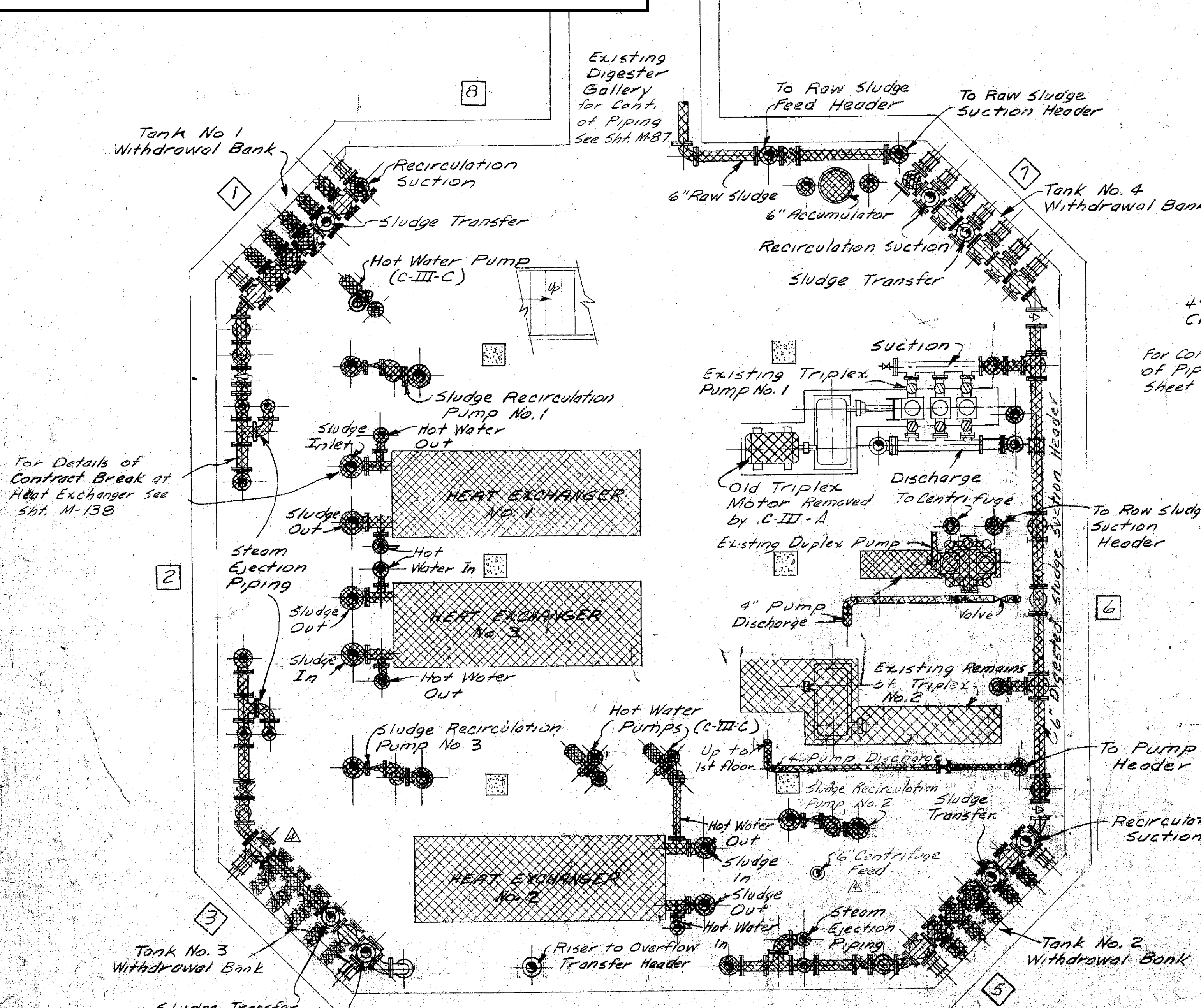
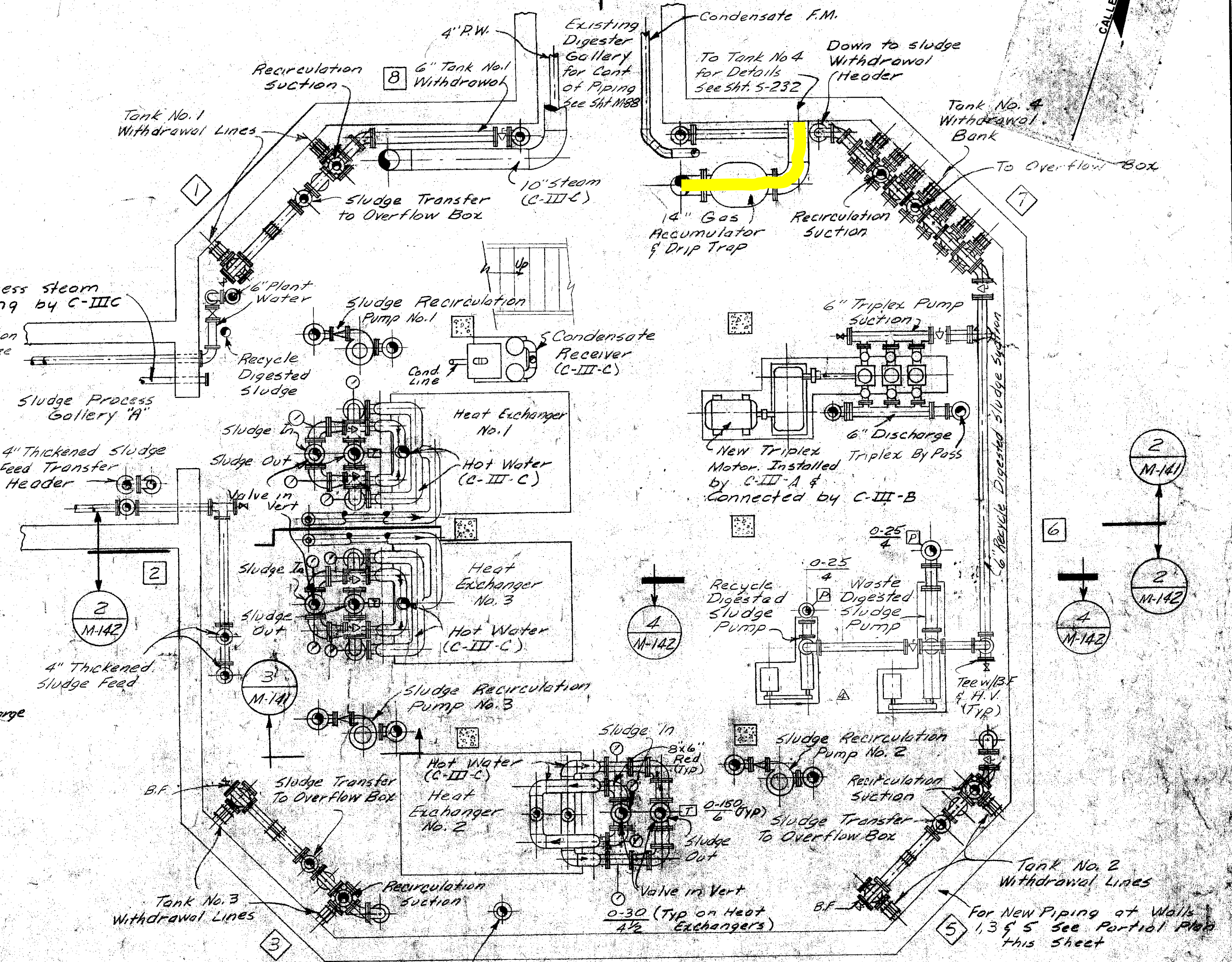


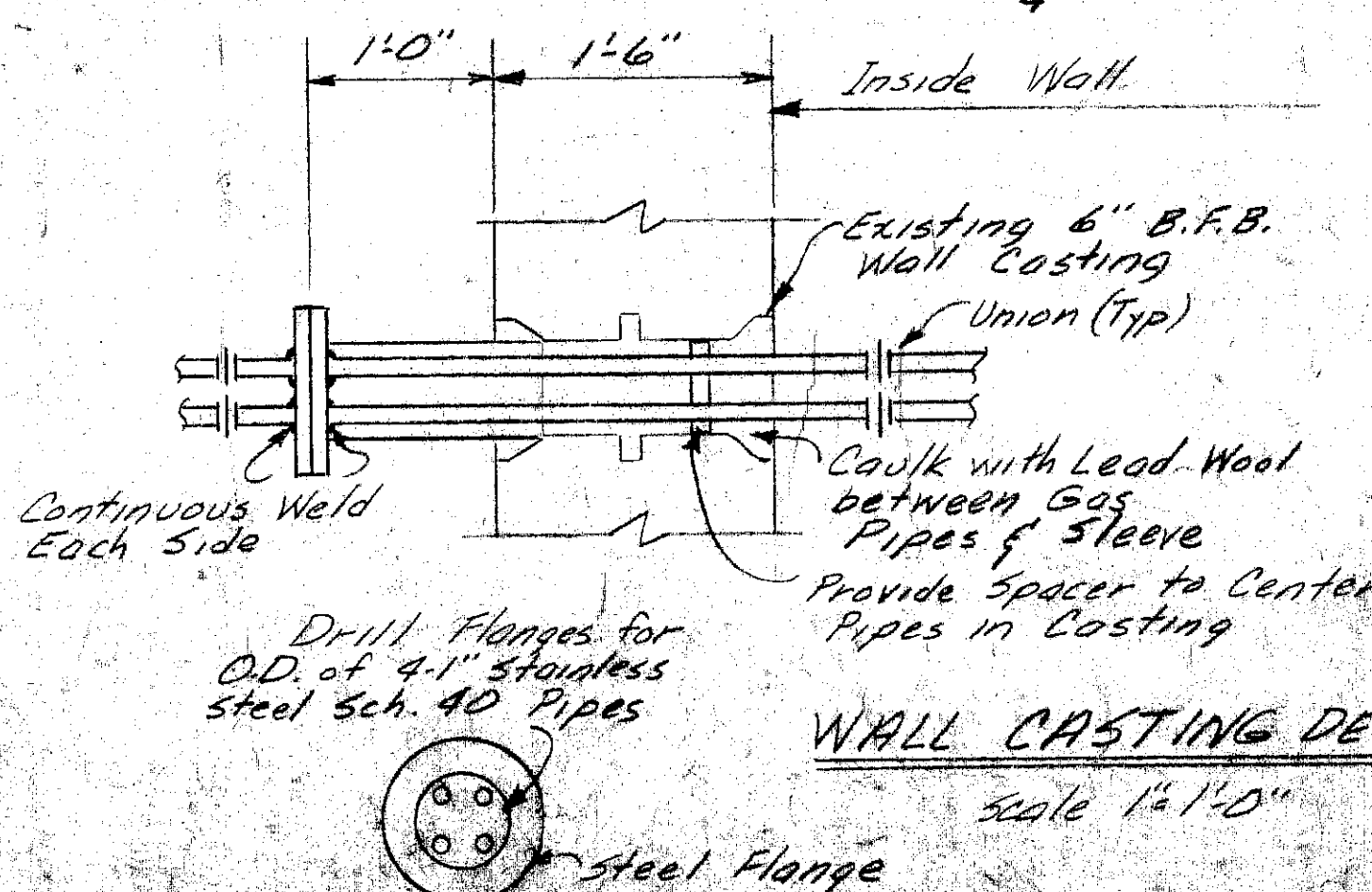
Need to be Replaced:
 Existing Stainless Steel:



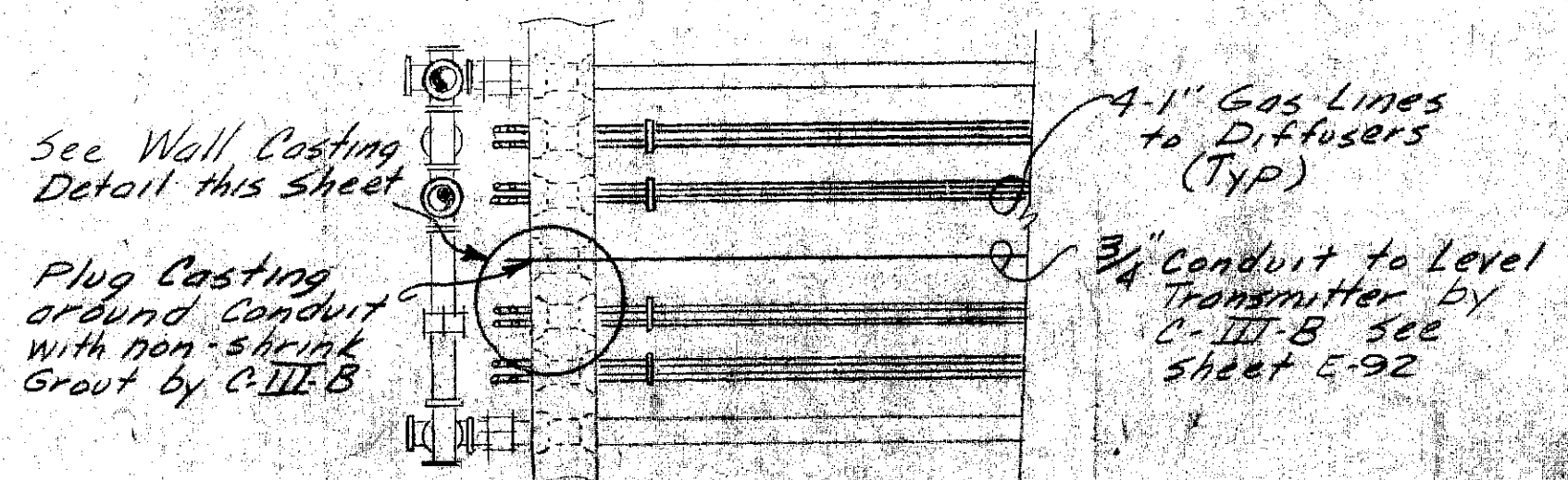
EXISTING PLAN OF DIGESTER CONTROL
 HOUSE AT ELEV 369.00'
 Scale 1/4" = 1'-0"



NEW PLAN OF DIGESTER CONTROL
 HOUSE AT ELEV 369.00'
 Scale 1/4" = 1'-0"



WALL CASTING DETAIL
 Scale 1/4" = 1'-0"



PARTIAL PLAN OF NEW WORK AT WALLS No. 1, 3 & 5
 Scale 1/4" = 1'-0"

- Notes**
1. For Elevations of Piping see sheets M-137 thru M-142
 2. All piping 6" unless otherwise noted
 3. [Symbol] Indicates Wall Number
 4. [Symbol] Indicates Piping to be removed
 5. B.F.B. - Bell Flange, Bell
 6. All Hot Water & Steam Piping Equip to be removed & installed by C-III-C
 7. [Symbol] Indicates Pressure Switch
 8. [Symbol] Indicates Indicating Thermostat
 9. [Symbol] Pressure Gauge
 10. See Dwg. E-291 (115.185-138DF) For Condensate Pipe Franch.

ATTENTION
 Drawing exhibits nearly accurate information. However, field checks should be made.

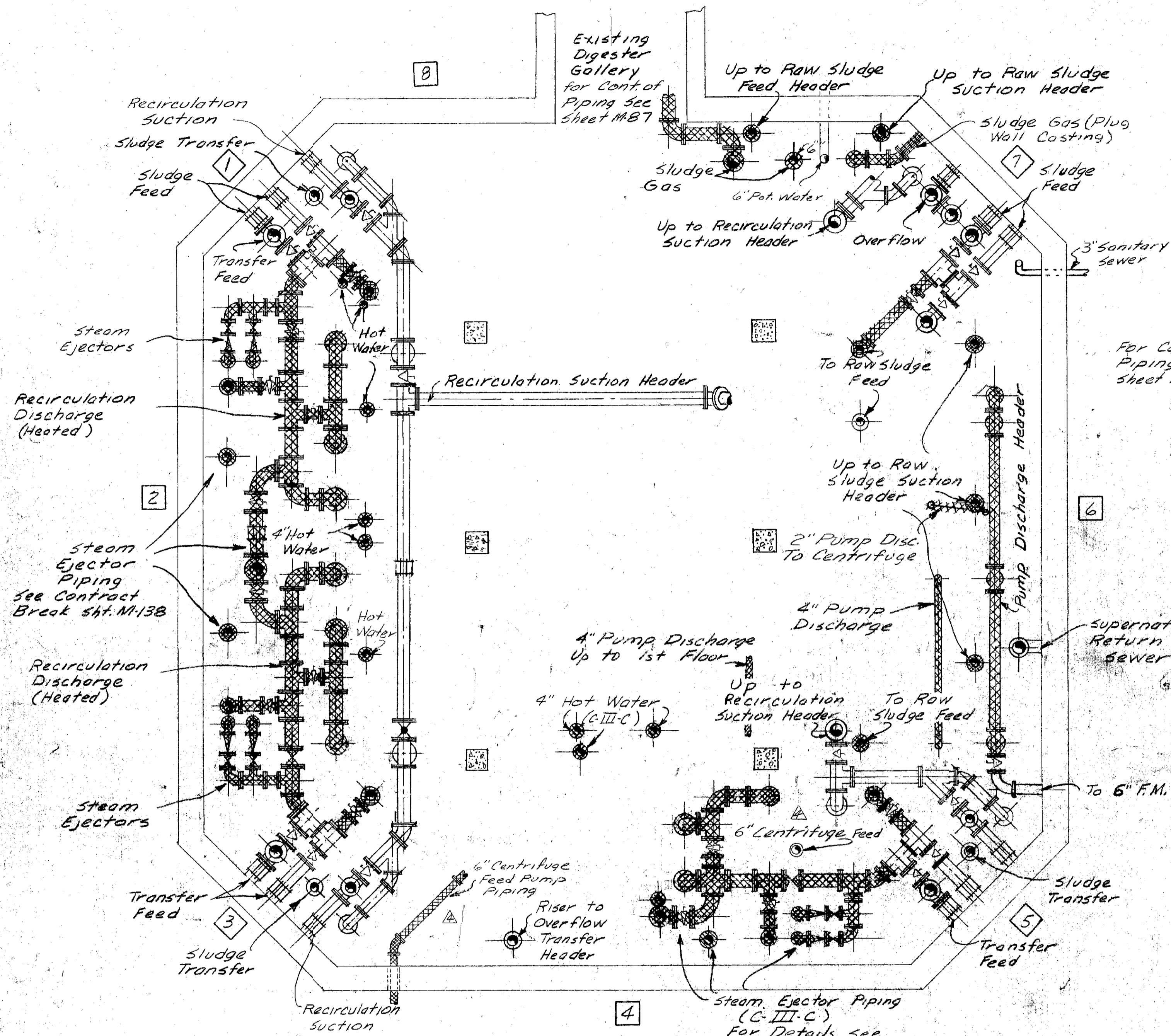
ONONDAGA COUNTY DEPARTMENT OF PUBLIC WORKS
 DIVISION OF DRAINAGE AND SANITATION
METROPOLITAN SYRACUSE SEWAGE TREATMENT PLANT
 MECHANICAL
DIGESTER CONTROL HSE. BASEMENT PLAN

O'BRIEN & GERE
 ENGINEERS, INC.
 SYRACUSE, NEW YORK

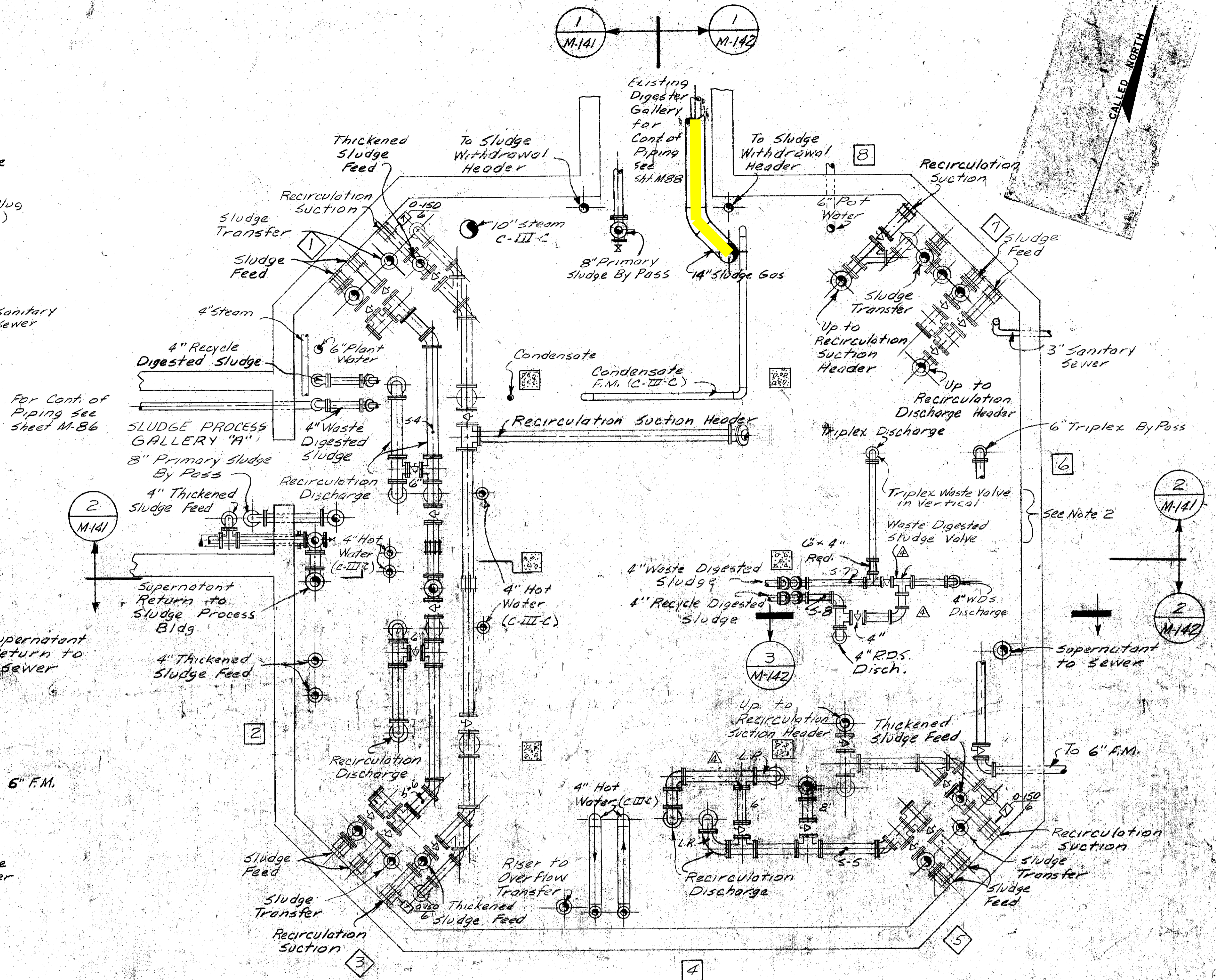
DATE: JUNE 1, 1971
 SCALE: AS SHOWN
 FILE NO. 115.185-314.42

PRINCIPAL ENGINEER N.Y.S.P.E. LIC. NO. 39764

Need to be Replaced:
 Existing Stainless Steel:



PLAN OF EXISTING DIGESTER CONTROL
HOUSE AT ELEV 371.50'
 scale 1/4" = 1'-0"



PLAN OF NEW DIGESTER CONTROL
HOUSE AT ELEV 371.50'
 scale 1/4" = 1'-0"

ATTENTION
 Drawing exhibits nearly accurate information. However, field checks should be made.

- Notes**
1. For Elevations of Piping see sheets M137 thru M142
 2. Triplex Waste Valve & Wasted Digested Sludge Valve to have limit switches to close contacts when valve closes. See sheets E-142 & I-13
 3. All piping 8" unless otherwise noted
 4. □ Indicates Wall Number
 5. XXX Indicates Piping to be removed
 6. All Hot Water & steam Piping & Equip to be removed & installed by C-III-C
 7. □ Indicates Indicating Thermostat
 8. 'S' Denotes Sample Connections. See sht M-143

Note: See Dwg. E-345 (File No. 115.185-1453F) For PH Analyzer Tap

IN CHARGE OF: J. D. M.
 DESIGNED BY: S. N. G.
 MADE BY: M. J. H.
 CHECKED BY: R. W. K.

PRINCIPAL ENGINEER N.Y.S.P.E. LIC. NO. 39764

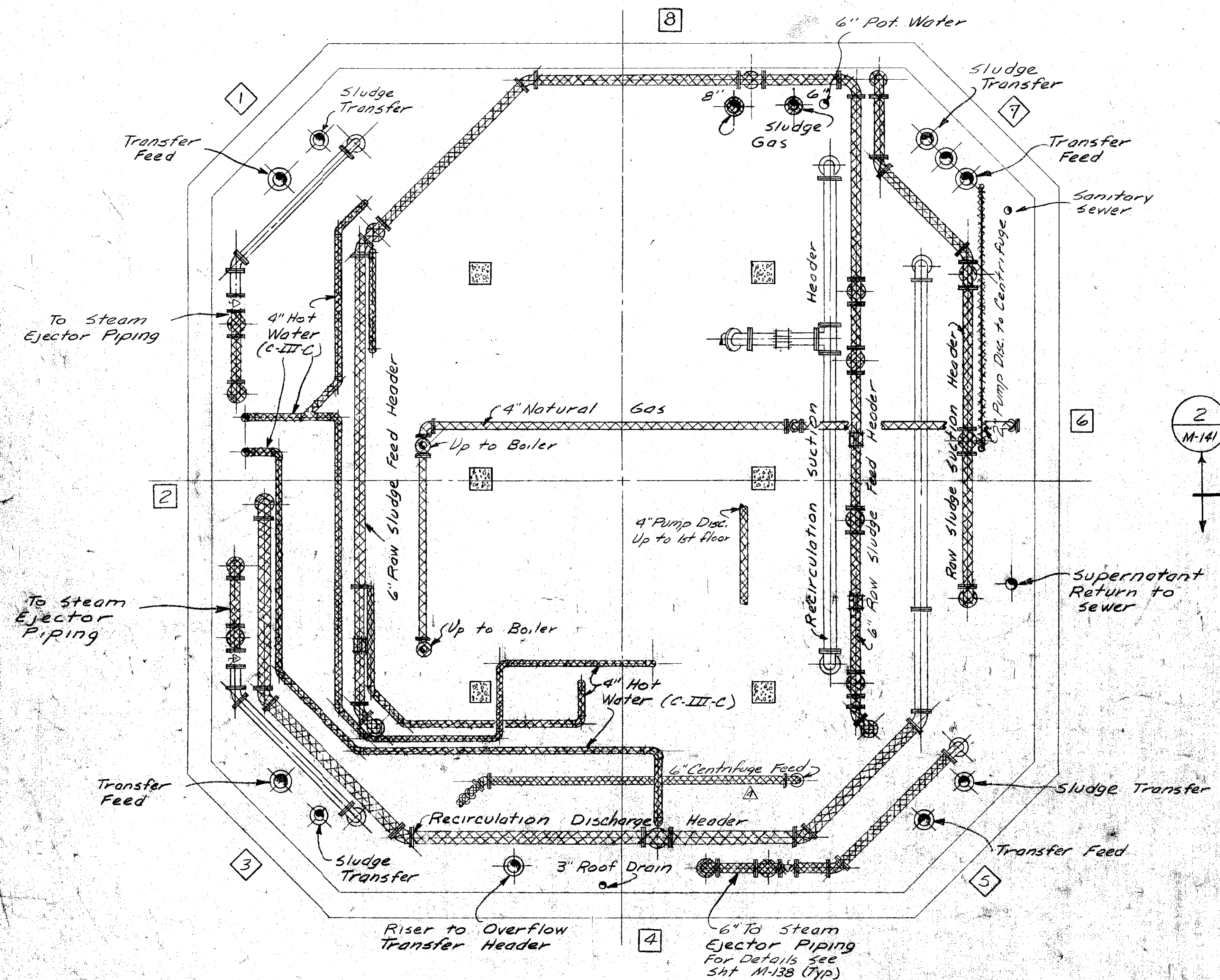
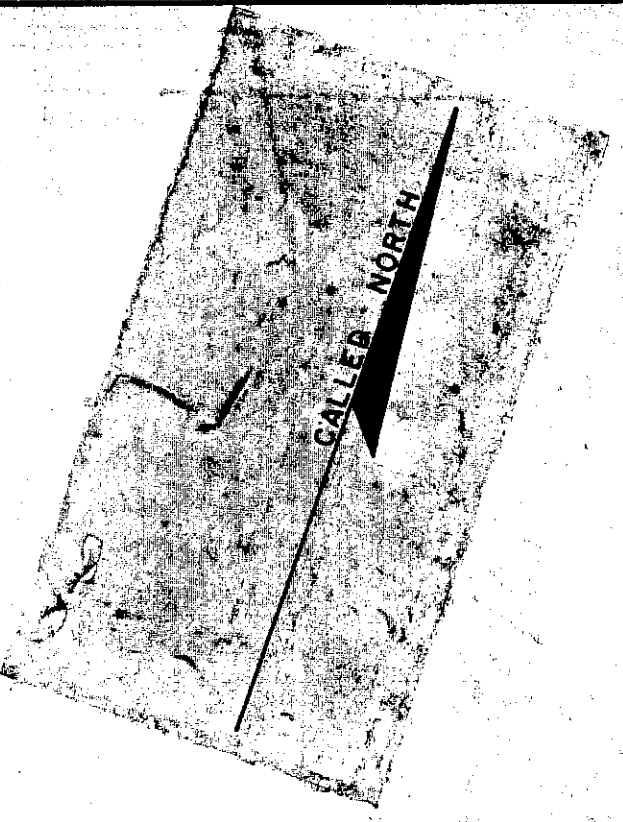
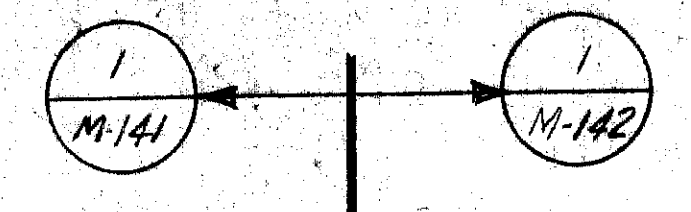
ONONDAGA COUNTY DEPARTMENT OF PUBLIC WORKS
 DIVISION OF DRAINAGE AND SANITATION
METROPOLITAN SYRACUSE SEWAGE TREATMENT PLANT
DIGESTER CONTROL HOUSE BASEMENT PLAN

O'BRIEN & GERE
 ENGINEERS, INC.
 SYRACUSE, N.Y.

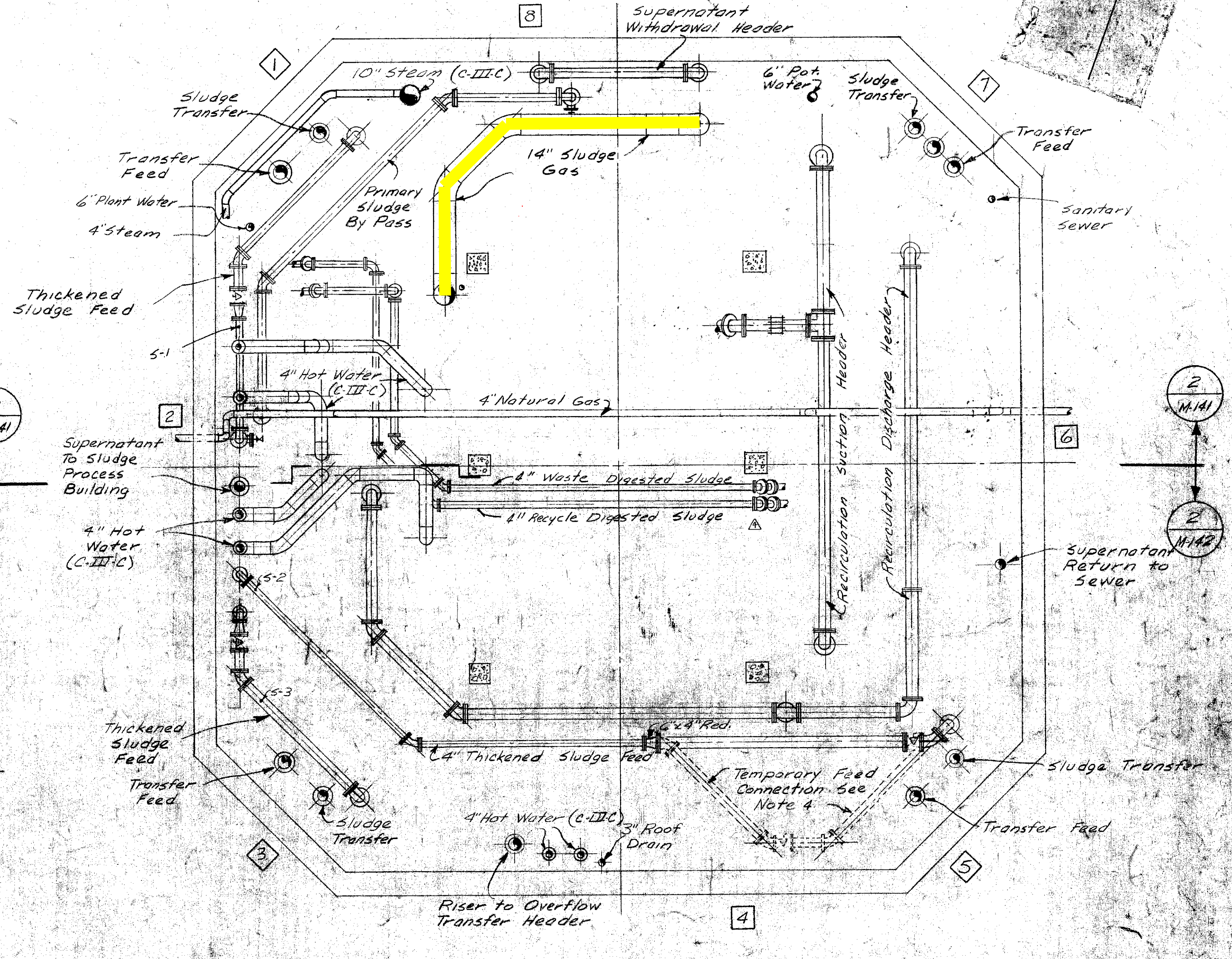
DATE: JUNE 1, 1972
 SCALE: 1/4" = 1'-0"
 FILE NO.: 115-185-1453F



Need to be Replaced:
 Existing Stainless Steel:



PLAN OF EXISTING DIGESTER CONTROL HOUSE AT ELEV 372.50'
 scale 1/4" = 1'-0"



PLAN OF NEW DIGESTER CONTROL HOUSE AT ELEV 372.50'
 scale 1/4" = 1'-0"

Note: See Dwg. AD-41(115-185-815F) For Revisions To This Dwg.

- Notes**
- 5' Denotes Sample Connections See Sht. M-143
 - 2' For Elevations of Piping see sheets M-137 thru M-142
 - 3' All piping 8" unless otherwise noted
 - 4' Temporary feed connection required to keep Digester No. 2 in service
 - 5' [] Indicates wall number
 - 6' ~~---~~ Indicates Piping to be removed
 - 7' All Hot Water & Steam Piping Equip. to be removed & installed by C-III-C

ATTENTION
 Drawing exhibits nearly accurate information. However, field checks should be made.

IN CHARGE OF: J. D. M.
 DESIGNED BY: B. N. G.
 MADE BY: M. J. H.
 CHECKED BY: R. W. P.



PRINCIPAL ENGINEER N.Y.S.P.E. LIC. NO. 3874

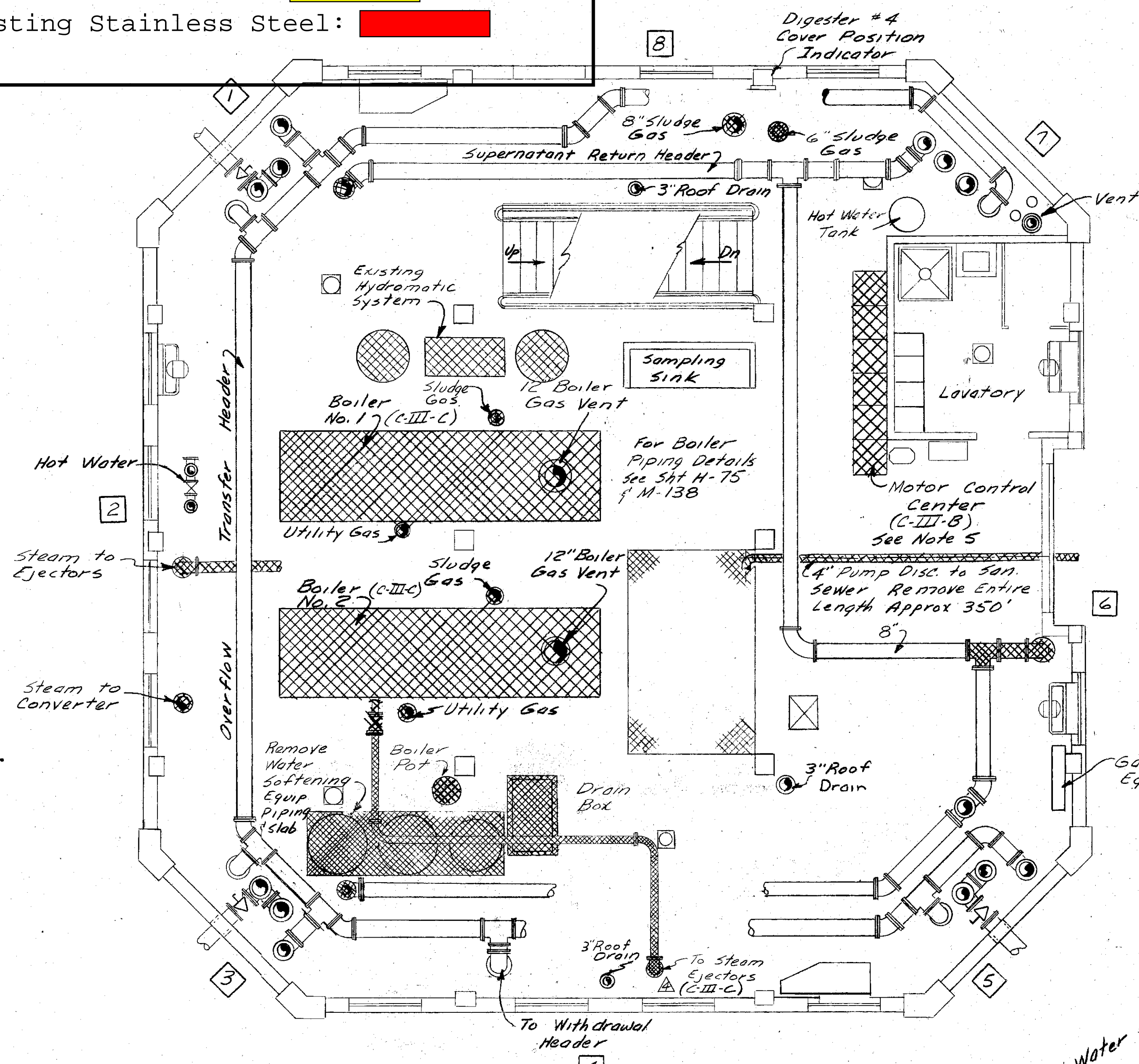
ONONDAGA COUNTY DEPARTMENT OF PUBLIC WORKS
 DIVISION OF DRAINAGE AND SANITATION
METROPOLITAN SYRACUSE SEWAGE TREATMENT PLANT
 MECHANICAL
DIGESTER CONTROL HOUSE BASEMENT PLAN

DATE: JUNE 1, 1971
 SCALE: 1/4" = 1'-0"
 FILE NO.: 115-185-815-F

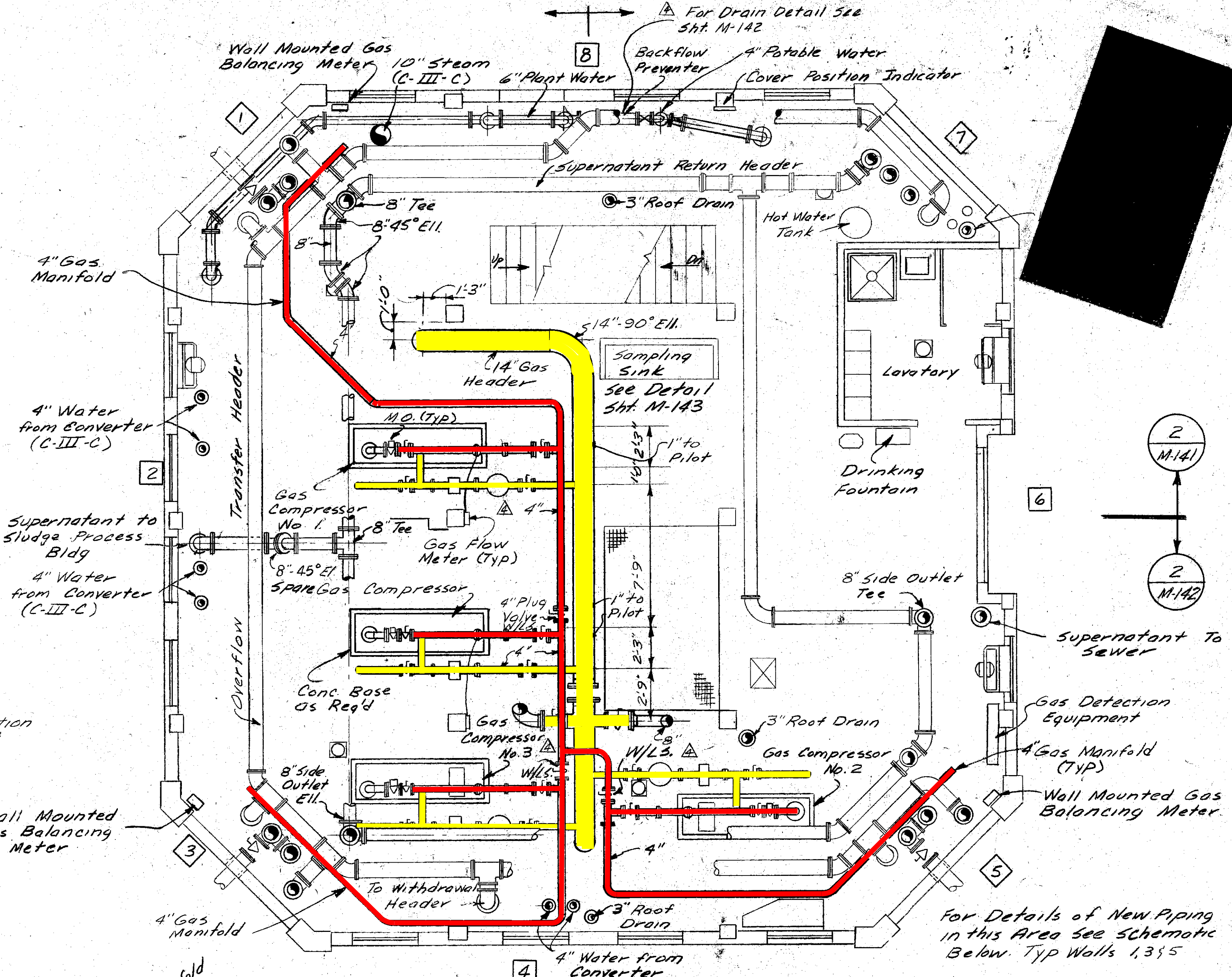
O'BRIEN & GERE
 ENGINEERS, INC.
 SYRACUSE, NEW YORK

STATE OF NEW YORK
 PROFESSIONAL ENGINEER & ARCHITECT

Need to be Replaced:
 Existing Stainless Steel:

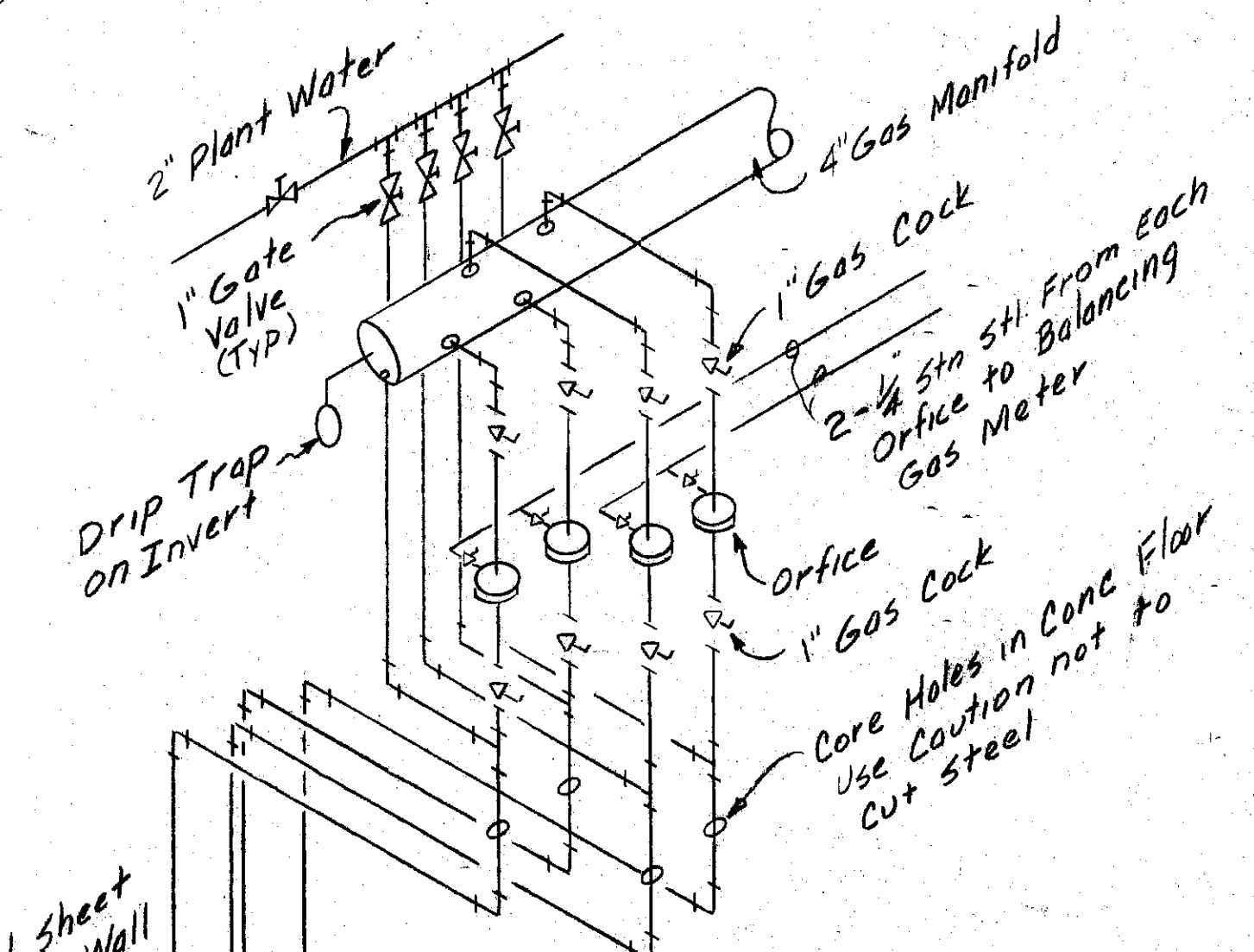


EXISTING PLAN OF DIGESTER CONTROL HOUSE AT ELEV 383.50'
 scale 1/4" = 1'-0"



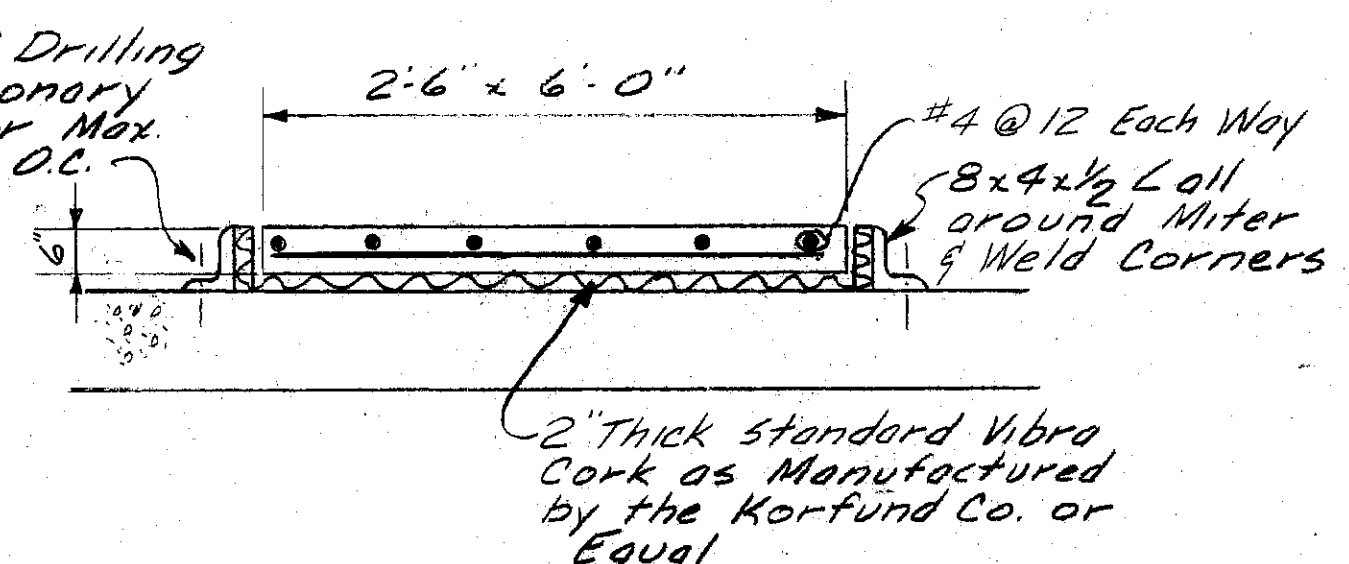
NEW PLAN OF DIGESTER CONTROL HOUSE AT ELEV 383.50'
 scale 1/4" = 1'-0"

For Details of New Piping in this Area See Schematic Below. Typ Walls 1,3&5



PARTIAL GAS DIFFUSER PIPING SCHEMATIC DIAGRAM
 Typical Walls 1,3&5

- Notes:
1. Provide 3" steel pipe support with mounted flange to floor on each end of Gas Manifold. Secure Flange to floor with Masonry Anchors.
 2. Slope all Gas Piping continuously to Drain.
 3. All Gas Piping 1" ss, unless otherwise noted.
 4. 1/2" Piping connections req'd to Manifold.
 5. Gas Balancing Meter to be Mounted Higher than Orifice Flanges.

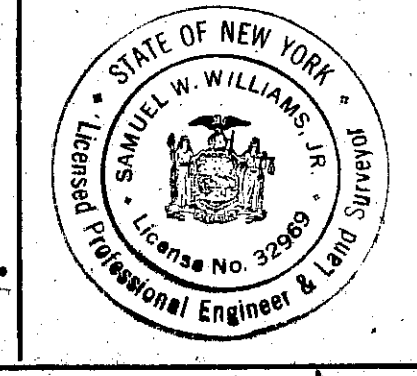


GAS COMPRESSOR BASE DETAIL
 scale 1/2" = 1'-0"

- Notes
1. [Symbol] Indicates Wall Number
 2. Slope all Gas Piping toward Accumulator
 3. [Symbol] Indicates Piping to be removed
 4. All Hot Water & steam Piping Equip to be removed & installed by C-III-C
 5. Motor Control Center to be removed by C-III-B
 6. Provide 1" Drain for New Compressors to Existing Floor Drains
 7. For Elevations of Piping see sheets M-137 thru M-142
 8. See [Symbol] 1,3&5 (File No. 115.185-2014F) For Floor Slab

ATTENTION
 Drawing exhibits nearly accurate information. However, field checks should be made.

ONONDAGA COUNTY DEPARTMENT OF PUBLIC WORKS
 DIVISION OF DRAINAGE AND SANITATION
METROPOLITAN SYRACUSE SEWAGE TREATMENT PLANT
 MECHANICAL
DIGESTER CONTROL HSE. FIRST FLOOR PLAN



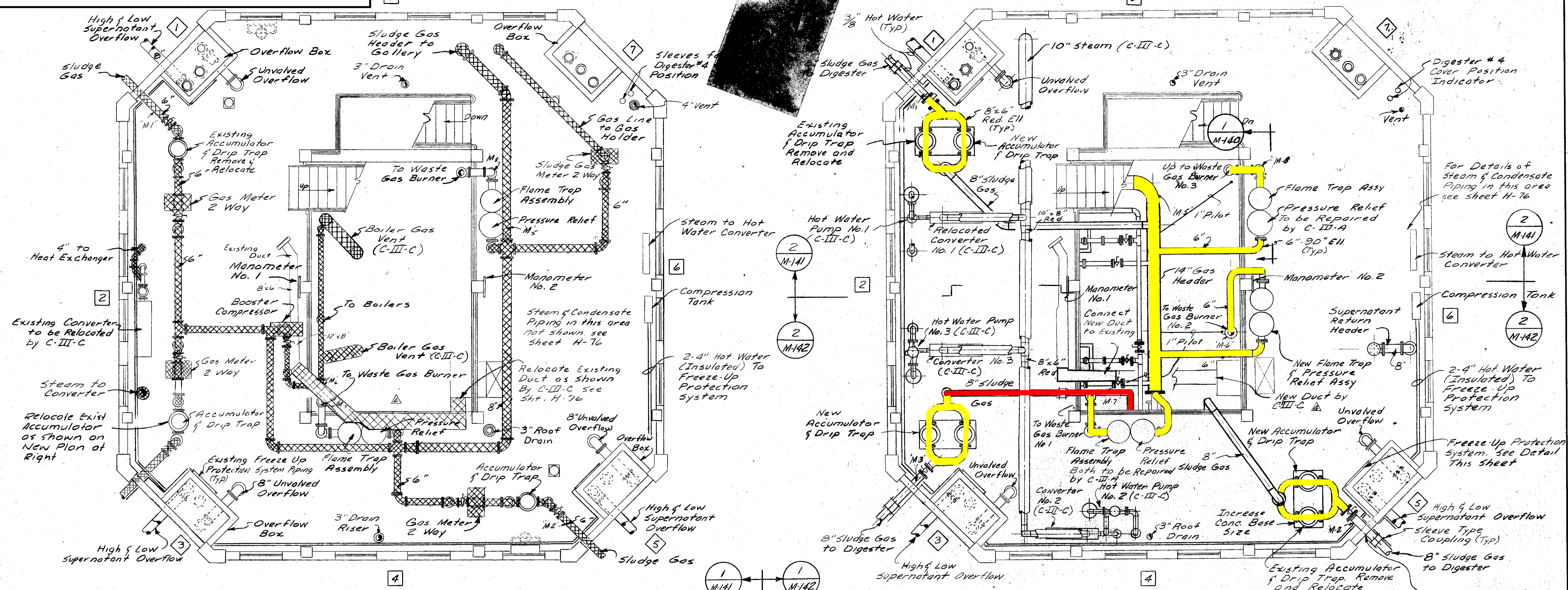
IN CHARGE OF: J. D. M.
 DESIGNED BY: B. N. G.
 MADE BY: J. M. S.
 CHECKED BY: R. W. R.

PRINCIPAL ENGINEER N.Y.S.P.E. LIC. NO. 39764

DATE: JUNE 1, 1971
 SCALE: AS SHOWN
 FILE NO.: 115.185-319-RD

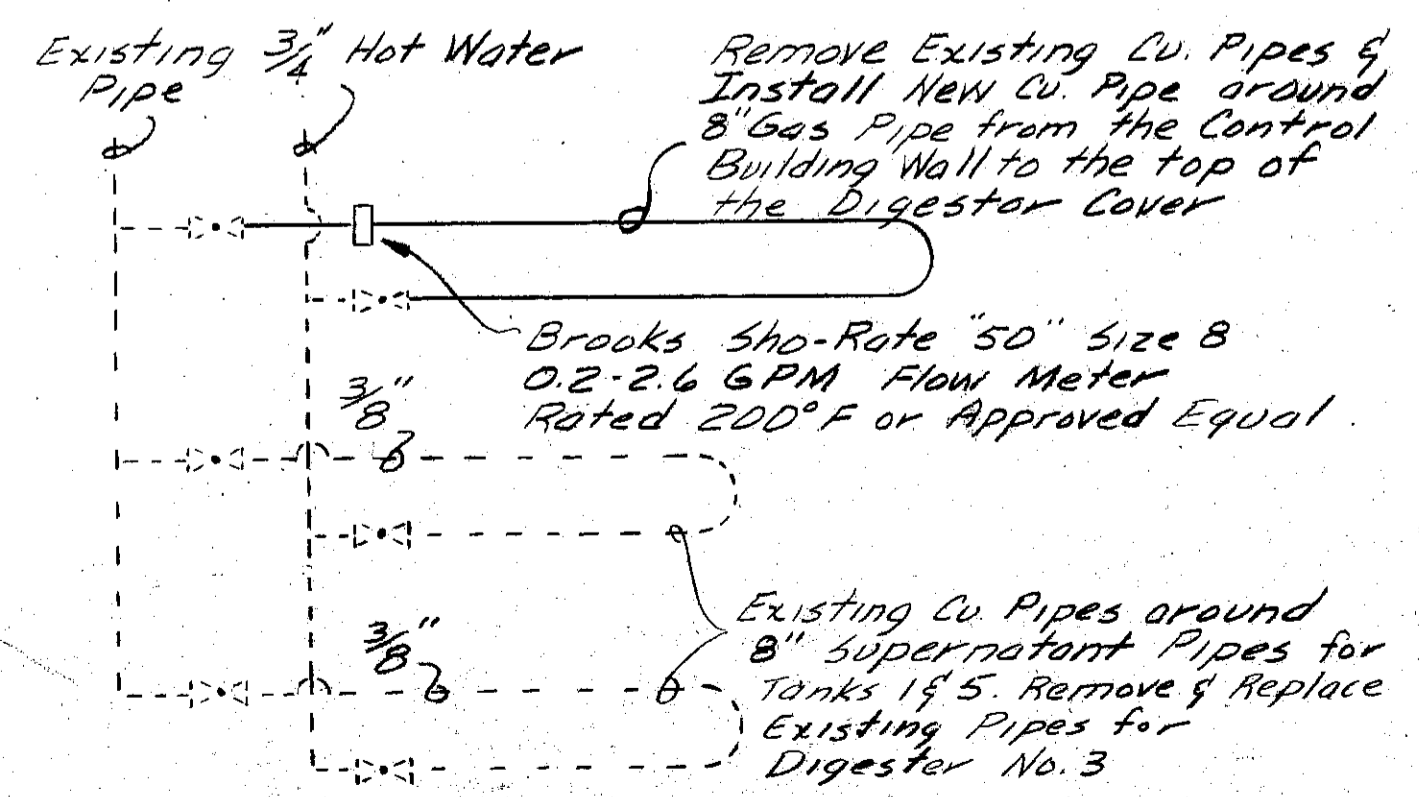
M-135

Need to be Replaced:
 Existing Stainless Steel:

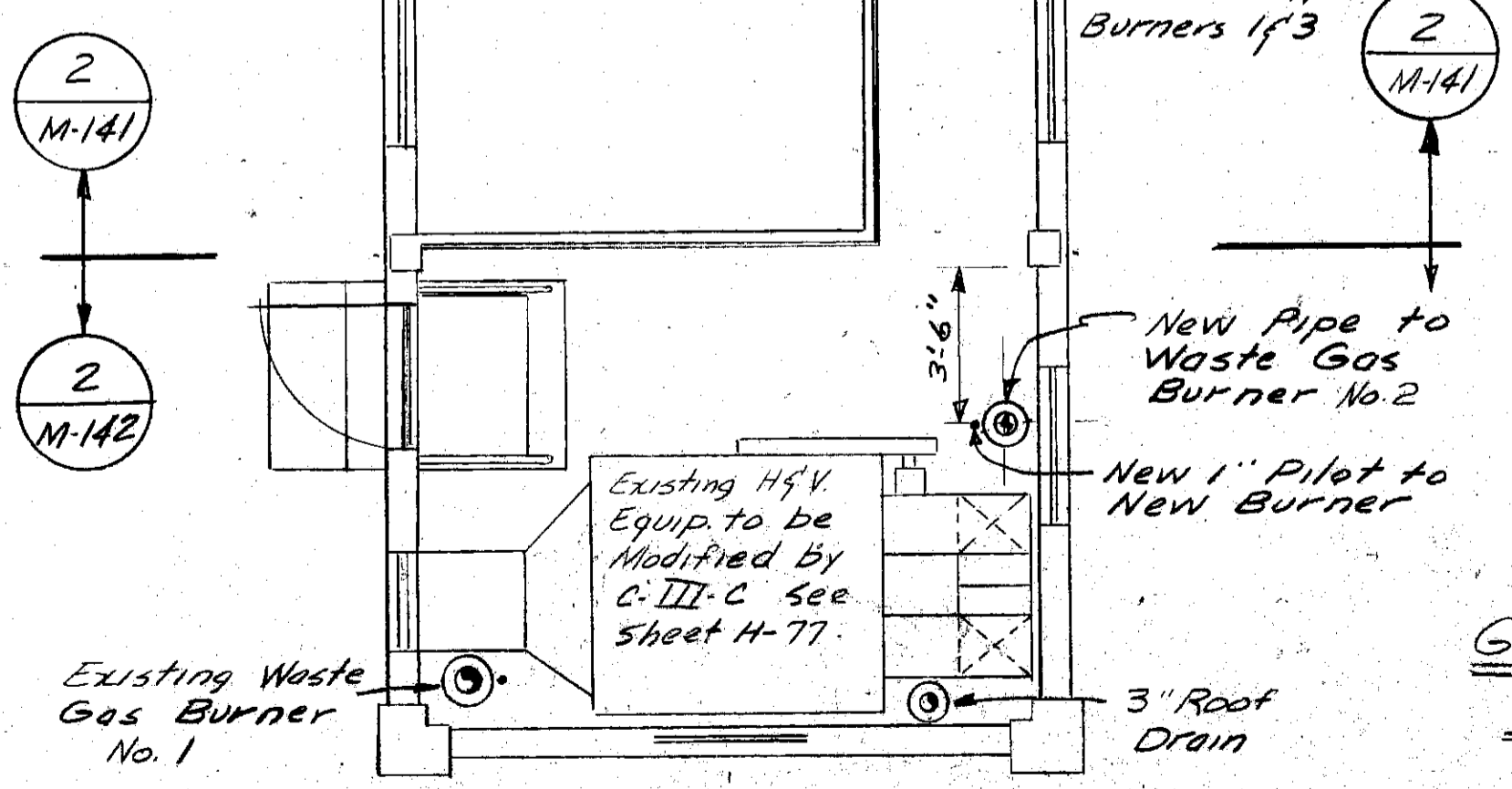


EXISTING PLAN OF DIGESTER CONTROL HOUSE AT ELEV 393.50'
 scale 1/4" = 1'-0"

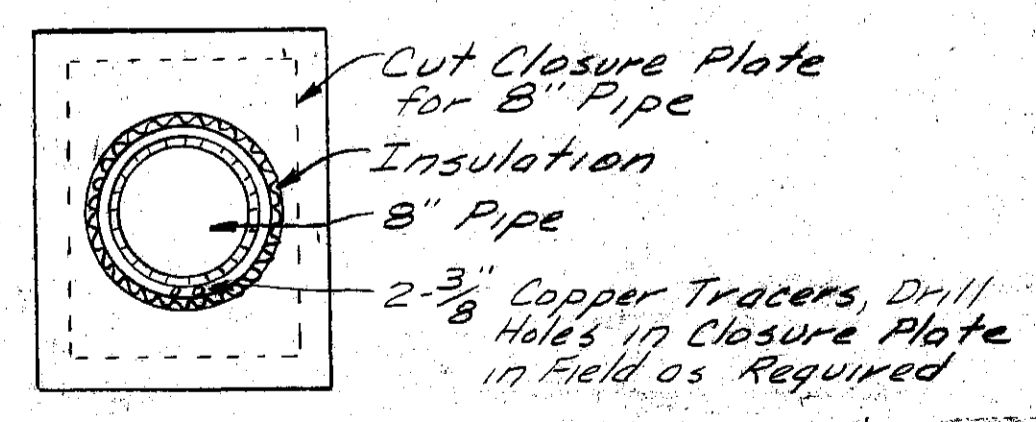
NEW PLAN OF DIGESTER CONTROL HOUSE AT ELEV 393.50'
 scale 1/4" = 1'-0"



FREEZE UP PROTECTION SYSTEM MODIFICATIONS TO WALL 1355



PENTHOUSE PLAN
 scale 1/4" = 1'-0"



GAS PIPE CLOSURE PLATE
 DETAIL WALLS 1355
 No Scale

- Notes
1. [] Indicates Wall Number
 2. Slope all Gas Piping toward Accumulators
 3. [] Indicates Piping to be removed
 4. 'M's' Denotes Manometer Connection see Detail sheet M-143
 5. All Hot Water & Steam Piping & Equipment to be removed & installed by C-III-C
 6. For Elevations of Piping see sheet M-137 thru M-142
 7. Freeze Up Protection System Modifications by C-III-A
 8. The Existing Pressure Relief & Flame Trap Assembly is a model 94 as manufactured by Pacific Flush Tank Co

ATTENTION
 Drawing exhibits nearly accurate information. However, field checks should be made.

IN CHARGE OF: J. D. M.
 DESIGNED BY: B. N. G.
 MADE BY: J. M. B.
 CHECKED BY: R. W. K.

PRINCIPAL ENGINEER: *James M. Blair*
 N.Y.S.P.E. LIC. NO. 39764

ONONDAGA COUNTY DEPARTMENT OF PUBLIC WORKS
 DIVISION OF DRAINAGE AND SANITATION

METROPOLITAN SYRACUSE SEWAGE TREATMENT PLANT
 MECHANICAL

DIGESTER CONTROL HSE. SECOND FLOOR PLAN

DATE: JUNE 1, 1971
 SCALE: AS SHOWN
 FILE NO: 115.185-320-RD

STATE OF NEW YORK
 JAMES M. BLAIR, WILLIAM J. JAMES
 LICENSE NO. 35900
 PROFESSIONAL ENGINEER & ARCHITECT

REVISIONS
 RD 2/2/73
 A 1/5/73
 B 3/1/73
 C 1/25/73
 D 10/2/71

M-136