

**ELECTRICAL INTERCONNECTION DATA**

<b>EQUIPMENT/DEVICE/ENCLOSURE DESCRIPTION</b>	Variable Speed Drive #1
<b>PROJECT</b>	Variable Speed Upgrades
<b>PREPARED BY (NAME)</b>	Joe Bronzetti

<b>LOCATION</b>	Baldwinsville
<b>CONTRACTOR</b>	Patricia Electric, Inc.
<b>FIELD CHECKED BY (NAME &amp; DATE)</b>	
<b>DD&amp;S REVIEWED BY (NAME &amp; DATE)</b>	
<b>APPROVED &amp; ACCEPTED (DATE)</b>	

THIS EQUIPMENT/DEVICE				INTERMEDIATE DEVICES, JUNCTION BOXES, ETC.		DESTINATION			REMARKS
EQUIPMENT TERMINATION FUNCTION	TERM.NO.	FIELD TERMINATION TERM.NO.	COLOR	CONDUIT OUT	LOCATIONS, TERM NO's, FUNCTION	CONDUIT IN	EQUIPMENT OR DEVI AND LOCATION	EQUIPMENT TERM.NO.	
Speed Command	TBX21-5	1	Black				Control Panel	114	TSP
	TBX21-6	1	White					115	
Start Command	TBX22-1	56	Purple		Control Panel Term #56 J-Box Term #12 TB-1		Stop / Lock-out	6	
Constant Speed	TBX22-4	19	Purple		Control Panel Term #19 Contrl Panel Term #19 TB-1		Motor T-Stat	129	
24V	TBX22-7	18	Blue		Control Panel Term #18 J-Box Term #18 TB-1		Motor T-Stat	127	
24V	TBX22-8	55A	Blue		Control Panel Term #55A J-Box Term #11 TB-1		Stop / Lock-out	5	
Relay Output -1	TBX25-2	1	Red				Harmonic Filter	1	
Ready	TBX25-3	2	Red				Harmonic Filter	2	
Relay Output -2	TBX26-2	3-1	Black				Control Panel	3A	
Running	TBX26-3	22	Red				Control Panel	22	
Relay Output -3	TBX27-2	3-1	Black				Control Panel	3A	
Fault	TBX27-3	25	Red				Control Panel	25	Jumper TB x26-2
Feed	U1		Brown		Harmonic Filter to 200 AMP		MC III I		
Feed	V1		Orange		Breaker in VFD Cabinet		MC III I		
Feed	W1		Yellow				MC III I		
Ground	GR		Black/Green				MC III I		

**ELECTRICAL INTERCONNECTION DATA**

<b>EQUIPMENT/DEVICE/ENCLOSURE DESCRIPTION</b>	Variable Speed Drive #2
<b>PROJECT</b>	Variable Speed Upgrades
<b>PREPARED BY (NAME)</b>	Joe Bronzetti

<b>LOCATION</b>	Baldwinsville
<b>CONTRACTOR</b>	Patricia Electric, Inc.
<b>FIELD CHECKED BY (NAME &amp; DATE)</b>	
<b>DD&amp;S REVIEWED BY (NAME &amp; DATE)</b>	
<b>APPROVED &amp; ACCEPTED (DATE)</b>	

THIS EQUIPMENT/DEVICE				INTERMEDIATE DEVICES, JUNCTION BOXES, ETC.		DESTINATION			REMARKS
EQUIPMENT TERMINATION		FIELD TERMINATION		CONDUIT OUT	LOCATIONS, TERM NO's, FUNCTION	CONDUIT IN	EQUIPMENT OR DEVI AND LOCATION	EQUIPMENT TERM.NO.	
FUNCTION	TERM.NO.	TERM.NO.	COLOR						
Speed Command	TBX21-5	2	Black				Control Panel	116	TSP
	TBX21-6	2	White					117	
Start Command	TBX22-1	60	Purple		Control Panel Term #60		Stop / Lock-out	17	
					J-Box Term #12 TB-2				
Constant Speed	TBX22-4	21	Purple		Contrl Panel Term #21		Motor T-Stat	217	
					J-Box Term #19 TB-2				
24V	TBX22-7	59A	Blue		Control Panel Term #59A		Stop / Lock-out	16	
					J-Box Term #11 TB-2				
24V	TBX22-8	20	Blue		Control Panel Term #20		Motor T-Stat	218	
					J-Box Term #18 T-B2				
Relay Output -1	TBX25-2	1	Red				Harmonic Filter	1	
Ready	TBX25-3	2	Red				Harmonic Filter	2	
Relay Output -2	TBX26-2	3-2	Black				Control Panel	3A	
Running	TBX26-3	23	Red				Control Panel	23	
Relay Output -3	TBX27-2	3-2	Black				Control Panel	3A	Jumper TB x26-2
Fault	TBX27-3	26	Red				Control Panel	26	
Feed	U1		Brown		Harmonic Filter to 200 AMP		MC III J		
Feed	V1		Orange		Breaker in VFD Cabinet		MC III J		
Feed	W1		Yellow				MC III J		
Ground	GR		Black/Green				MC III J		

**ELECTRICAL INTERCONNECTION DATA**

EQUIPMENT/DEVICE/ENCLOSURE DESCRIPTION	Variable Speed Drive #3
PROJECT	Variable Speed Upgrades
PREPARED BY (NAME)	Joe Bronzetti

LOCATION	Baldwinsville
CONTRACTOR	Patricia Electric, Inc.
FIELD CHECKED BY (NAME & DATE)	
DD&S REVIEWED BY (NAME & DATE)	
APPROVED & ACCEPTED (DATE)	

THIS EQUIPMENT/DEVICE				INTERMEDIATE DEVICES, JUNCTION BOXES, ETC.		DESTINATION			REMARKS
EQUIPMENT TERMINATION FUNCTION	TERM.NO.	FIELD TERMINATION TERM.NO.	COLOR	CONDUIT OUT	LOCATIONS, TERM NO's, FUNCTION	CONDUIT IN	EQUIPMENT OR DEVI AND LOCATION	EQUIPMENT TERM.NO.	
Speed	TBX21-5	3	Black				Control Panel	118	TSP
	TBX21-6	3	White					119	
Start Command	TBX22-1	64	Blue		Control Panel Term #64		Stop / Lock-out	26	
					J-Box Term #12 TB-3				
Constant Speed	TBX22-4	90	Purple		Contrl Panel Term #90		Motor T-Stat	327	
					J-Box Term # TB-3				
24V	TBX22-7	63A	Black		Control Panel Term #63A		Stop / Lock-out	5	
					J-Box Term #11 TB-3				
24V	TBX22-8	89	Blue		Control Panel Term #89		Motor T-Stat	328	
					J-Box Term #18 TB-3				
Relay Output -1	TBX25-2	1	Red				Harmonic Filter	1	
Ready	TBX25-3	2	Red				Harmonic Filter	2	
Relay Output -2	TBX26-2	3-3	Black				Control Panel	3A	
Running	TBX26-3	23	Red				Control Panel	24	
Relay Output -3	TBX27-2	3-3	Black				Control Panel	3A	Jumper TB x26-2
Fault	TBX27-3	27	Red				Control Panel	29	
Feed	U1		Brown		Harmonic Filter to 200 AMP		MCC IV B		
Feed	V1		Orange		Breaker in VFD Cabinet		MCC IV B		
Feed	W1		Yellow				MCC IV B		
Ground	GR		Black/Green				MCC IV B		







**ELECTRICAL INTERCONNECTION DATA**

<b>EQUIPMENT/DEVICE/ENCLOSURE DESCRIPTION</b>	Variable Speed Drive Control Cabinet
<b>PROJECT</b>	Variable Speed Upgrades
<b>PREPARED BY (NAME)</b>	Joe Bronzetti

<b>LOCATION</b>	Baldwinsville
<b>CONTRACTOR</b>	Patricia Electric, Inc.
<b>FIELD CHECKED BY (NAME &amp; DATE)</b>	
<b>DD&amp;S REVIEWED BY (NAME &amp; DATE)</b>	
<b>APPROVED &amp; ACCEPTED (DATE)</b>	

THIS EQUIPMENT/DEVICE				INTERMEDIATE DEVICES, JUNCTION BOXES, ETC.		DESTINATION			REMARKS
EQUIPMENT TERMINATION		FIELD TERMINATION		CONDUIT		EQUIPMENT OR DEVI AND LOCATION	EQUIPMENT TERM.NO.		
FUNCTION	TERM.NO.	TERM.NO.	COLOR	OUT	LOCATIONS, TERM NO's, FUNCTION				IN
120V Power	1	1	Black				Panel LE-LF	22	
	2	2	White					2	
N/O-1CR-1	2	2A	White		J-Box Term #2 TB-1		Solenoid Valve #1	102	
					J-Box in Bsmt. #102				
N/O-1CR-1	4	4	Red		J-Box Term #4 TB-1		Solenoid Valve #1	33	
					J-Box in Bsmt. #33				
N/C-1CR-1	5	5	Red		J-Box Term #5 TB-1		Motor Heater #1	128	
					J-Box in Bsmt. #128				
N/O-2CR-1	2	2B	White		J-Box Term #2 TB-2		Solenoid Valve #2	202	
					J-Box in Bsmt. #202				
N/O-2CR-1	6	6	Red		J-Box Term #4		Solenoid Valve #2	33	
					J-Box in Bsmt. #33				
N/C-2CR-1	7	3-1	Red		J-Box Term #5		Motor Heater #2	219	
					J-Box in Bsmt. #219				
N/O-3CR-1	2	2C	White		J-Box Term #2 TB-3		Solenoid Valve #3	302	
					J-Box in Bsmt. #302				
N/O-3CR-1	8	8	Red		J-Box Term #4		Solenoid Valve #3	33	
					J-Box in Bsmt. #33				
N/C-3CR-1	9	9	Red		J-Box Term #5		Motor Heater #3	329	
					J-Box in Bsmt. #329				

EQUIPMENT/DEVICE/ENCLOSURE DESCRIPTION	Variable Speed Drive Cabinet Cont.
PROJECT	Variable Speed Upgrades
PREPARED BY (NAME)	Joe Bronzetti

LOCATION	Baldwinsville
CONTRACTOR	Patricia Electric, Inc.
FIELD CHECKED BY (NAME & DATE)	
DD&S REVIEWED BY (NAME & DATE)	
APPROVED & ACCEPTED (DATE)	

THIS EQUIPMENT/DEVICE				INTERMEDIATE DEVICES, JUNCTION BOXES, ETC.		DESTINATION			REMARKS
EQUIPMENT TERMINATION		FIELD TERMINATION		CONDUIT	CONDUIT	EQUIPMENT OR DEVI AND LOCATION	EQUIPMENT TERM.NO.		
FUNCTION	TERM.NO.	TERM.NO.	COLOR	OUT				LOCATIONS, TERM NO's, FUNCTION	IN
Wet Well #1	10	10	Black		J-Box Term #1 TB-4		Level Switch	86	
High Level Relay	11	11	Red		J-Box Term #2 TB-4		Level Switch	58	
Wet Well #1	12	12	Black		J-Box Term #3 TB-4		Level Switch	85	
Low Level Relay	13	13	Red		J-Box Term #4 TB-4		Level Switch	56	
Wet Well #2	14	14	Black		J-Box Term #5 TB-4		Level Switch	88	
High Level Relay	15	15	Red		J-Box Term #6 TB-4		Level Switch	62	
Wet Well #2	16	16	Black		J-Box Term #7 TB-4		Level Switch	87	
Low Level Relay	17	17	Red		J-Box Term #8 TB-4		Level Switch	60	
Check Valve #1	3A	3A	Black		J-Box Term #13 TB-1		Check Valve #1	101	
C. V. Open #1	29	29	Blue		J-Box Term #14 TB-1		Check Valve #1	116	
C. V. Closed #1	30	30	Purple		J-Box Term #15 TB-1		Check Valve #1	117	
Check Valve #2	3B	3B	Black		J-Box Term 13 TB-2		Check Valve #2	201	
C. V. Open #2	31	31	Blue		J-Box Term #14 TB-2		Check Valve #2	216	
C. V. Closed #2	32	32	Purple		J-Box Term #15 TB-2		Check Valve #2	217	
Check Valve #3	3C	3C	Black		J-Box Term 13 TB-3		Check Valve #3	301	
C. V. Open #3	33	33	Blue		J-Box Term #14 TB-3		Check Valve #3	316	
C. V. Closed #3	34	34	Purple		J-Box Term #15 TB-3		Check Valve #3	317	
N/O Run Contact	57	57	Black		J-Box Term #7 TB-1		Indication Light	77	Remote Panel Alarms
To MCC	58	58	Red		J-Box Term #8 TB-1		Indication Light	78	Remote Panel Alarms
N/O Run Contact	61	61	Black		J-Box Term #7 TB-2		Indication Light	78	Remote Panel Alarms





AS BUILT

# SYSTEM HARDWARE CIRCUIT DIAGRAM

DRIVE SERIAL NUMBERS:  
223S 506366  
223S 506367  
223S 506368



LIVERPOOL, NEW YORK  
TEL: (315) 453-1766  
FAX: (315) 453-1767

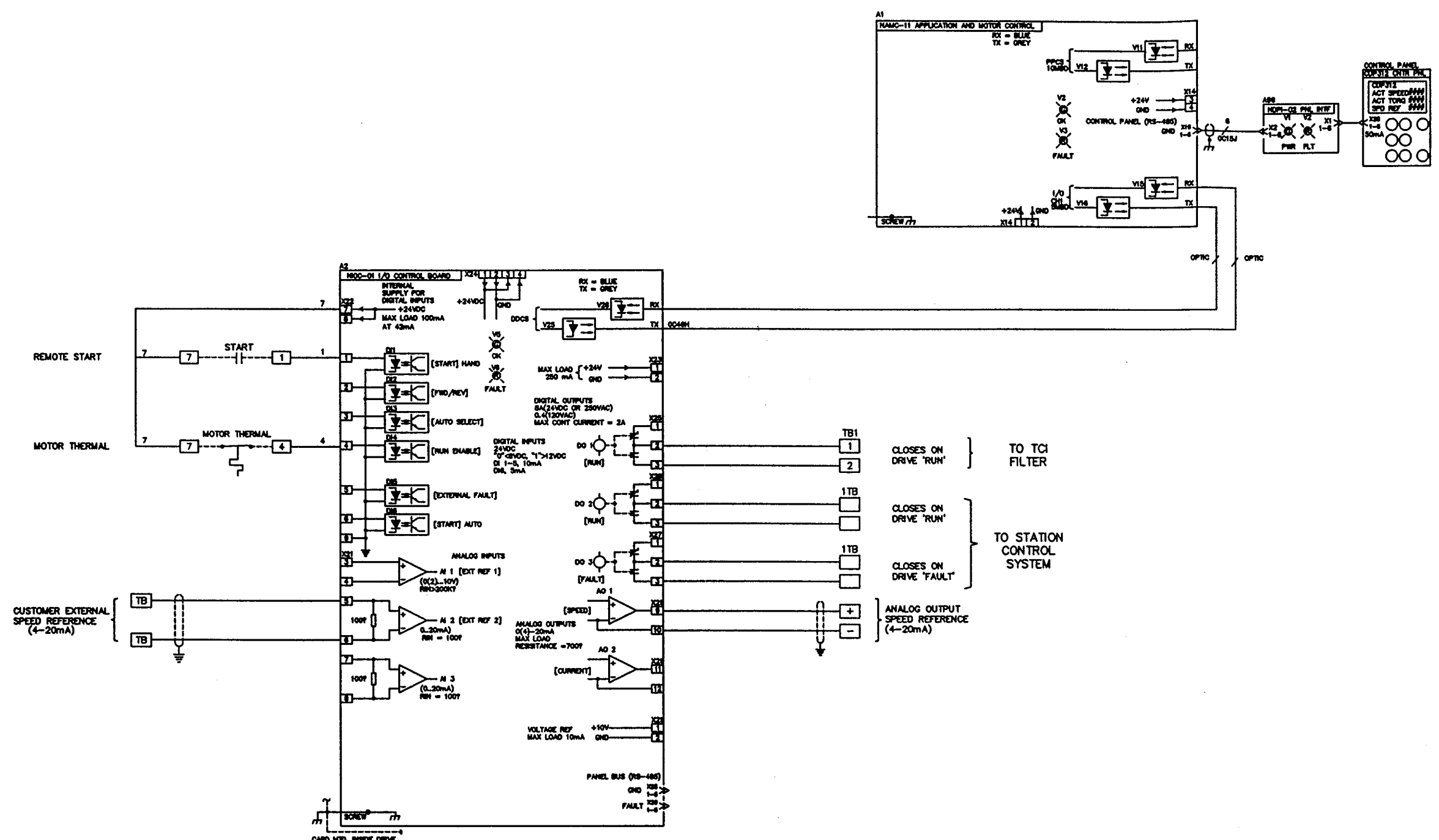
**TITLE** BALDWINVILLE WWTP INFLUENT PUMPS  
VARIABLE SPEED DRIVE UPGRADE  
ONONDAGA COUNTY DEPT OF  
WATER ENVIRONMENT PROTECTION

**CUSTOMER** PATRICIA ELECTRIC CO, INC

THIS DOCUMENT CONTAINS TRADE SECRETS PROPRIETARY TO PIONEER PUMP SYSTEMS.  
NEITHER THIS DOCUMENT NOR ITS CONTENTS MAY BE DISCLOSED TO ANY THIRD PARTIES  
NOT IN THE EMPLOY OF PIONEER PUMP SYSTEMS WITHOUT PRIOR WRITTEN APPROVAL.

DATE	PAGE	DRAWING NUMBER	REVISION NUMBER
12/17/01	1 OF 5	060030	B

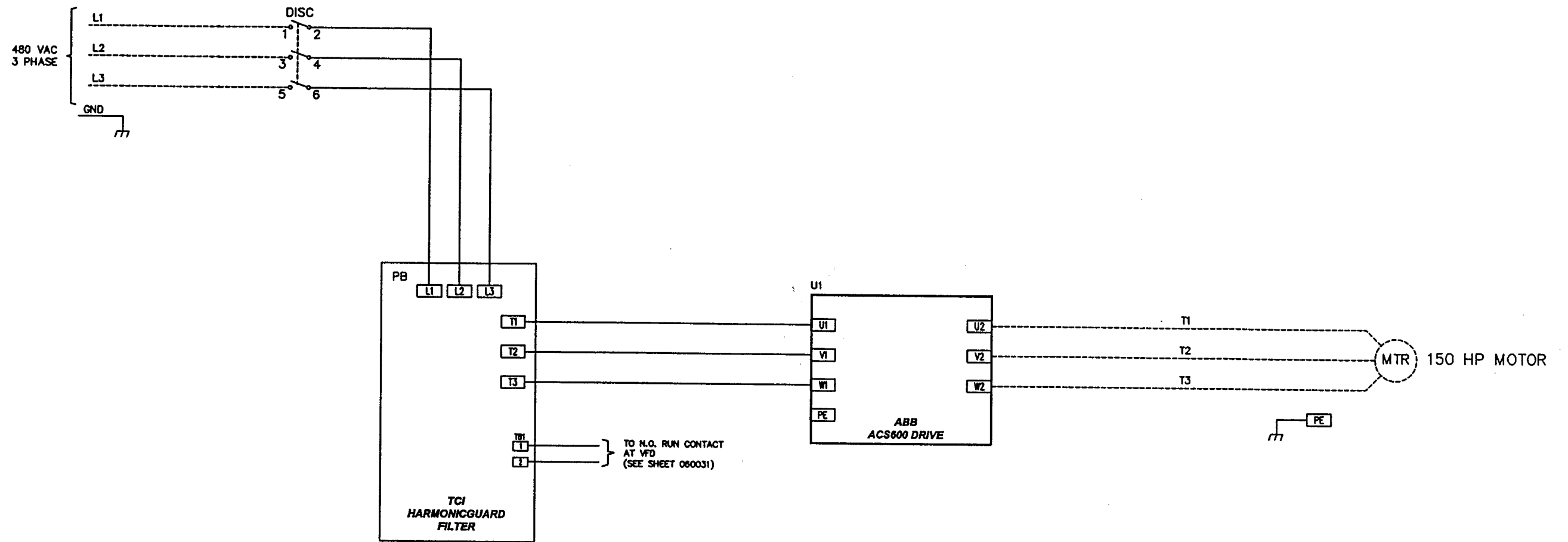
NO. 1 & 3 VFD CABINET  
CONTROL CONNECTIONS



- NOTES:
- ABB DRIVE MODEL ACS801-0140-4-00081200801
  - LOCAL SPEED CONTROL BY DRIVE KEY PAD
  - AUTO START CONTACT FROM PLANT CONTROL SYSTEM
  - DRIVE RUN CONTACT INITIATES HARMONIC FILTER OPERATION
  - DRIVE KEYPAD MOUNTED ON ENCLOSURE DOOR
  - DRIVE KEYPAD PROVIDES MOTOR SPEED, MOTOR CURRENT & MOTOR FREQUENCY
  - DRIVE SHUTS DOWN HIGH MOTOR TEMPERATURE (DI4)
  - DASHED WIRING PROVIDED BY OTHERS
  - ALL CIRCUITS SHOWN DE-ENERGIZED

	<b>TITLE</b> BALDWINVILLE WWTP INFLUENT PUMPS VARIABLE SPEED DRIVE UPGRADE ONONDAGA COUNTY DEPT OF ENVIRONMENTAL PROTECTION				
	<b>CUSTOMER</b> PATRICIA ELECTRIC CO, INC				
LIVERPOOL, NEW YORK TEL: (315) 453-1766 FAX: (315) 453-1767		THIS DOCUMENT CONTAINS TRADE SECRETS PROPRIETARY TO PIONEER PUMP SYSTEMS. NEITHER THIS DOCUMENT NOR ITS CONTENTS MAY BE DISCLOSED TO ANY THIRD PARTIES NOT IN THE EMPLOY OF PIONEER PUMP SYSTEMS WITHOUT PRIOR WRITTEN APPROVAL.			
		DATE	PAGE	DRAWING NUMBER	REVISION NUMBER
		12/17/01	2 OF 5	060031	B

**NO. 1 & 3 VFD CABINET  
POWER DIAGRAM**



**NOTES:**

- PROGRAMMING:  
MACRO = FACTORY  
10.2 EXT 2 START/STOP - DI1  
16.1 RUN ENABLE - DI4
- ABB DRIVE MODEL ACS601-0140-4-00081200801
- REFER TO INSTALLATION MANUAL FOR TIGHTENING TORQUE VALUES
- LOCAL SPEED CONTROL BY DRIVE KEY PAD
- AUTO START CONTACT FROM PLANT CONTROL SYSTEM
- DRIVE KEYPAD MOUNTED ON ENCLOSURE DOOR
- DRIVE KEYPAD PROVIDES MOTOR SPEED, MOTOR CURRENT & MOTOR FREQUENCY
- DRIVE SHUTS DOWN HIGH MOTOR TEMPERATURE (DI4)
- DASHED WIRING PROVIDED BY OTHERS
- CUSTOMER TO PROVIDE BRANCH CIRCUIT PROTECTION PER NEC AND LOCAL CODE
- ALL CIRCUITS SHOWN DE-ENERGIZED



LIVERPOOL, NEW YORK  
TEL: (315) 453-1766  
FAX: (315) 453-1767

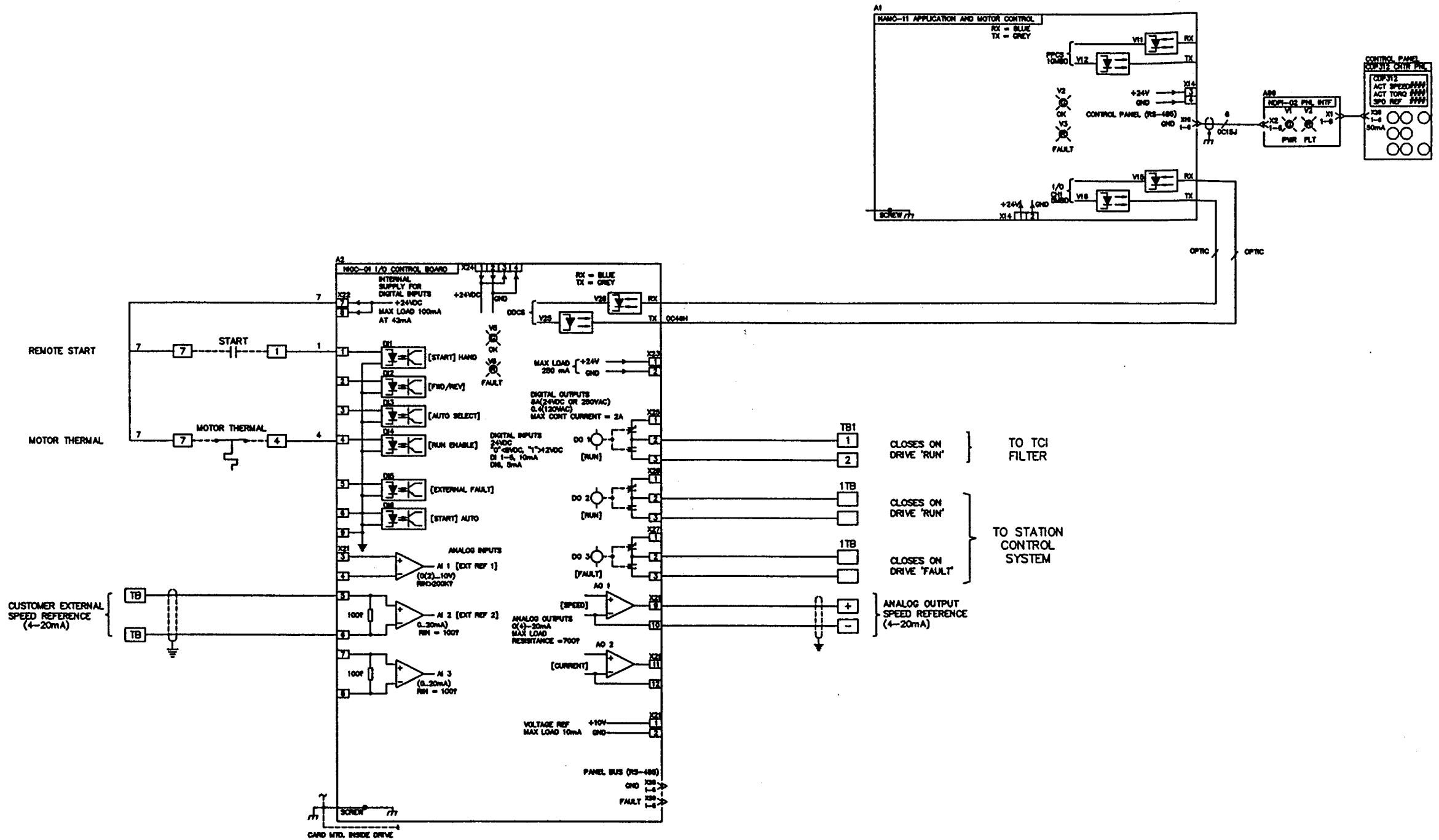
**TITLE** BALDWINVILLE WWTP INFLUENT PUMPS  
VARIABLE SPEED DRIVE UPGRADE  
ONONDAGA COUNTY DEPT OF  
ENVIRONMENTAL PROTECTION

**CUSTOMER**  
PATRICIA ELECTRIC CO, INC

THIS DOCUMENT CONTAINS TRADE SECRETS PROPRIETARY TO PIONEER PUMP SYSTEMS.  
NEITHER THIS DOCUMENT NOR ITS CONTENTS MAY BE DISCLOSED TO ANY THIRD PARTIES  
NOT IN THE EMPLOY OF PIONEER PUMP SYSTEMS WITHOUT PRIOR WRITTEN APPROVAL.

DATE	PAGE	DRAWING NUMBER	REVISION NUMBER
12/17/01	3 OF 5	060032	B

NO. 2 VFD CABINET  
CONTROL CONNECTIONS



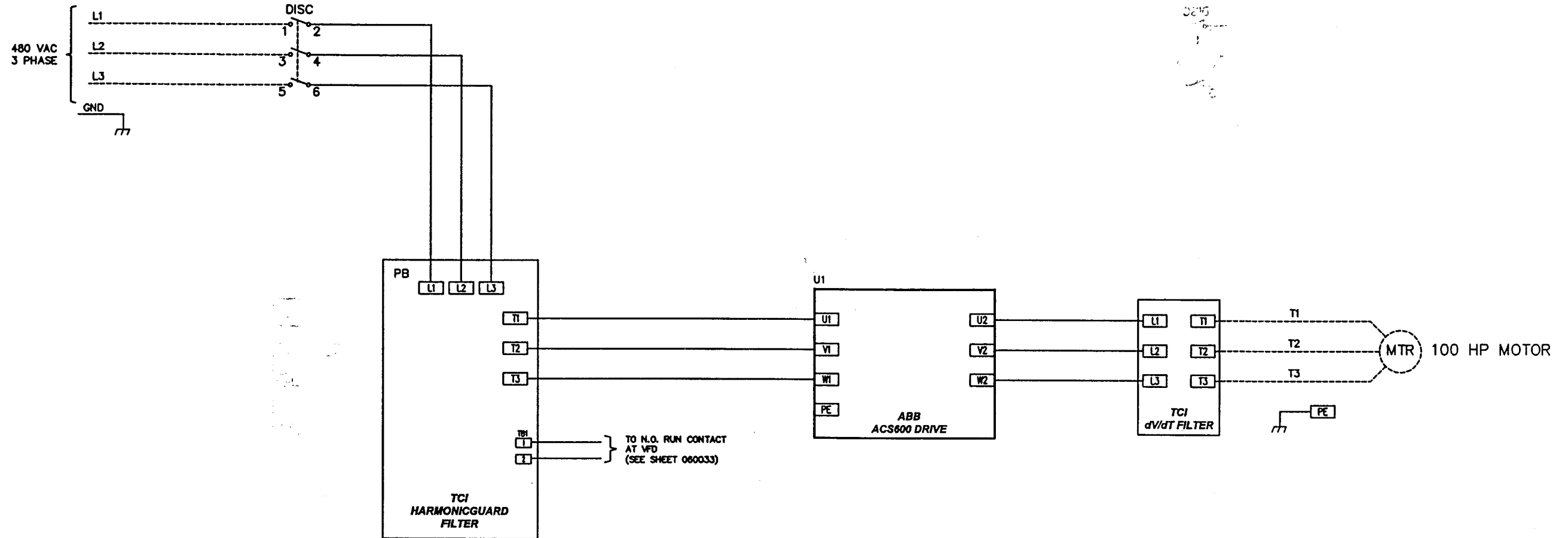
- NOTES:
- ABB DRIVE MODEL ACS601-0120-4-00081200801
  - LOCAL SPEED CONTROL BY DRIVE KEY PAD
  - AUTO START CONTACT FROM PLANT CONTROL SYSTEM
  - DRIVE RUN CONTACT INITIATES HARMONIC FILTER OPERATION
  - DRIVE KEYPAD MOUNTED ON ENCLOSURE DOOR
  - DRIVE KEYPAD PROVIDES MOTOR SPEED, MOTOR CURRENT & MOTOR FREQUENCY
  - DRIVE SHUTS DOWN HIGH MOTOR TEMPERATURE (DI4)
  - DASHED WIRING PROVIDED BY OTHERS
  - ALL CIRCUITS SHOWN DE-ENERGIZED



LIVERPOOL, NEW YORK  
TEL: (315) 453-1766  
FAX: (315) 453-1767

<b>TITLE</b> BALDWINVILLE WWTP INFLUENT PUMPS VARIABLE SPEED DRIVE UPGRADE ONONDAGA COUNTY DEPT OF ENVIRONMENTAL PROTECTION			
<b>CUSTOMER</b> PATRICIA ELECTRIC CO, INC			
THIS DOCUMENT CONTAINS TRADE SECRETS PROPRIETARY TO PIONEER PUMP SYSTEMS. NEITHER THIS DOCUMENT NOR ITS CONTENTS MAY BE DISCLOSED TO ANY THIRD PARTIES NOT IN THE EMPLOY OF PIONEER PUMP SYSTEMS WITHOUT PRIOR WRITTEN APPROVAL.			
<b>DATE</b>	<b>PAGE</b>	<b>DRAWING NUMBER</b>	<b>REVISION NUMBER</b>
12/17/01	4 OF 5	060033	B

NO. 2 VFD CABINET  
POWER DIAGRAM



NOTES:

- PROGRAMMING:  
MACRO = FACTORY  
10.2 EXT 2 START/STOP - D1  
16.1 RUN ENABLE - D14
- ABB DRIVE MODEL ACS601-0120-4-00081200801
- REFER TO INSTALLATION MANUAL FOR TIGHTENING TORQUE VALUES
- LOCAL SPEED CONTROL BY DRIVE KEY PAD
- AUTO START CONTACT FROM PLANT CONTROL SYSTEM
- DRIVE KEYPAD MOUNTED ON ENCLOSURE DOOR
- DRIVE KEYPAD PROVIDES MOTOR SPEED, MOTOR CURRENT & MOTOR FREQUENCY
- DRIVE SHUTS DOWN HIGH MOTOR TEMPERATURE (D14)
- DASHED WIRING PROVIDED BY OTHERS
- CUSTOMER TO PROVIDE BRANCH CIRCUIT PROTECTION PER NEC AND LOCAL CODE
- ALL CIRCUITS SHOWN DE-ENERGIZED



LIVERPOOL, NEW YORK  
TEL: (315) 453-1766  
FAX: (315) 453-1767

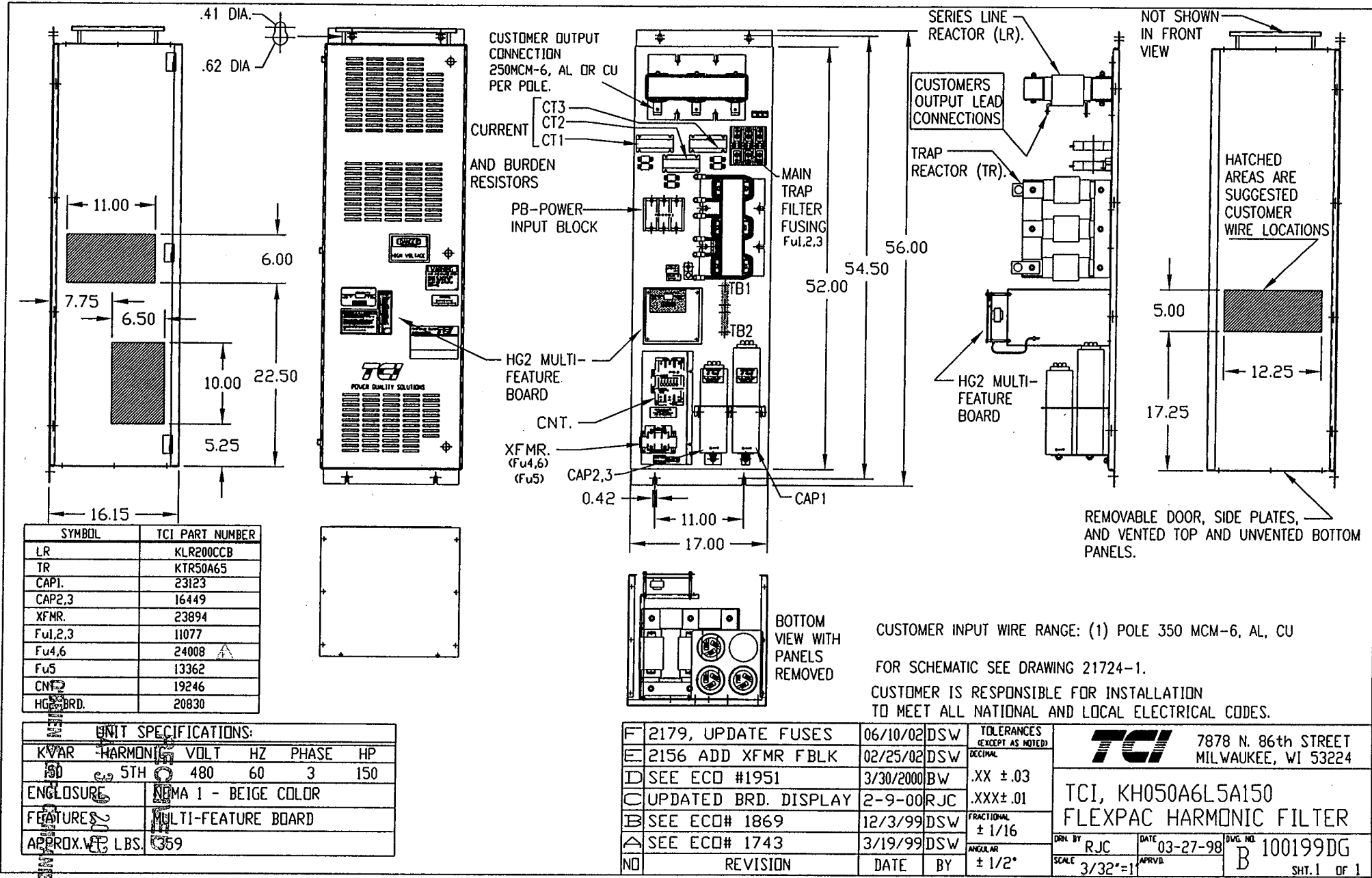
TITLE BALDWINVILLE WWTP INFLUENT PUMPS  
VARIABLE SPEED DRIVE UPGRADE  
ONONDAGA COUNTY DEPT OF  
ENVIRONMENTAL PROTECTION

CUSTOMER PATRICIA ELECTRIC CO, INC

THIS DOCUMENT CONTAINS TRADE SECRETS PROPRIETARY TO PIONEER PUMP SYSTEMS.  
NEITHER THIS DOCUMENT NOR ITS CONTENTS MAY BE DISCLOSED TO ANY THIRD PARTIES  
NOT IN THE EMPLOY OF PIONEER PUMP SYSTEMS WITHOUT PRIOR WRITTEN APPROVAL.

DATE	PAGE	DRAWING NUMBER	REVISION NUMBER
12/17/01	3 OF 5	060034	B

BALDWINVILLE WWTP - INFLUENT PUMPS NO. 1/3



SYMBOL	TCI PART NUMBER
LR	KLR200CCB
TR	KTR50A65
CAP1	23123
CAP2,3	16449
XFMR.	23894
Fu1,2,3	11077
Fu4,6	24008
Fu5	13362
CNT	19246
HG2 BRD.	20830

UNIT SPECIFICATIONS:						
KVAR	HARMONIC	VOLT	HZ	PHASE	HP	
50	5TH	480	60	3	150	
ENCLOSURE	NEMA 1 - BEIGE COLOR					
FEATURES	MULTI-FEATURE BOARD					
APPROX. WT.	LBS. 359					

NO	REVISION	DATE	BY
F	2179, UPDATE FUSES	06/10/02	DSW
E	2156 ADD XFMR FBLK	02/25/02	DSW
D	SEE ECO #1951	3/30/2000	BW
C	UPDATED BRD. DISPLAY	2-9-00	RJC
B	SEE ECO# 1869	12/3/99	DSW
A	SEE ECO# 1743	3/19/99	DSW

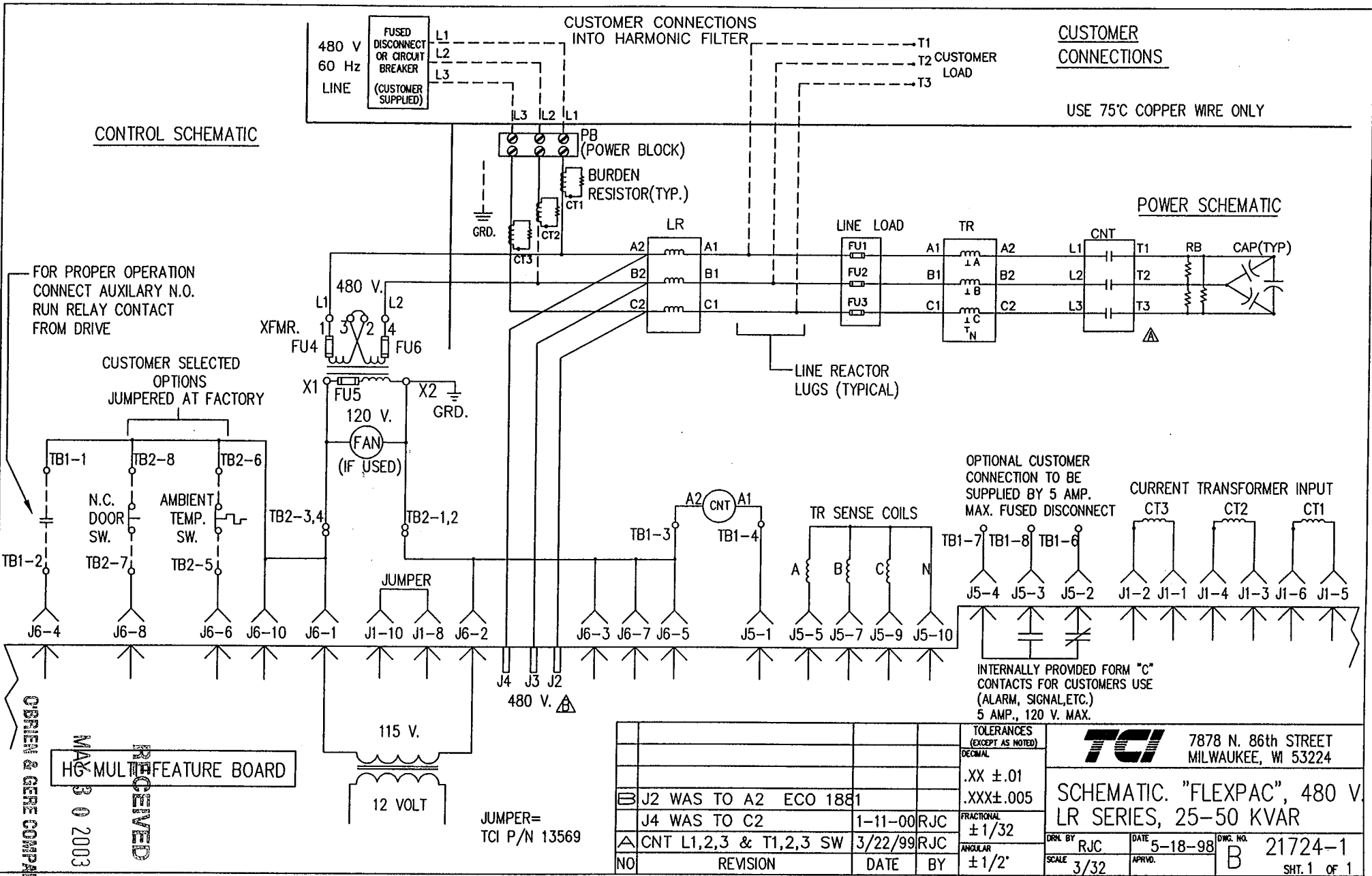
**TCI** 7878 N. 86th STREET  
MILWAUKEE, WI 53224

TCI, KH050A6L5A150  
FLEXPAC HARMONIC FILTER

DRN BY: RJC DATE: 03-27-98 Dwg. NO: 100199DG  
SCALE: 3/32"=1" APPRVD: B

SHT. 1 OF 1

CUSTOMER INPUT WIRE RANGE: (1) POLE 350 MCM-6, AL, CU  
FOR SCHEMATIC SEE DRAWING 21724-1.  
CUSTOMER IS RESPONSIBLE FOR INSTALLATION TO MEET ALL NATIONAL AND LOCAL ELECTRICAL CODES.



**CONTROL SCHEMATIC**

**CUSTOMER CONNECTIONS**

**POWER SCHEMATIC**

FOR PROPER OPERATION  
CONNECT AUXILIARY N.O.  
RUN RELAY CONTACT  
FROM DRIVE

CUSTOMER SELECTED  
OPTIONS  
JUMPERED AT FACTORY

OPTIONAL CUSTOMER  
CONNECTION TO BE  
SUPPLIED BY 5 AMP.  
MAX. FUSED DISCONNECT

CURRENT TRANSFORMER INPUT

INTERNALLY PROVIDED FORM "C"  
CONTACTS FOR CUSTOMERS USE  
(ALARM, SIGNAL, ETC.)  
5 AMP., 120 V. MAX.

OBRIEN & GERE COMPANIES

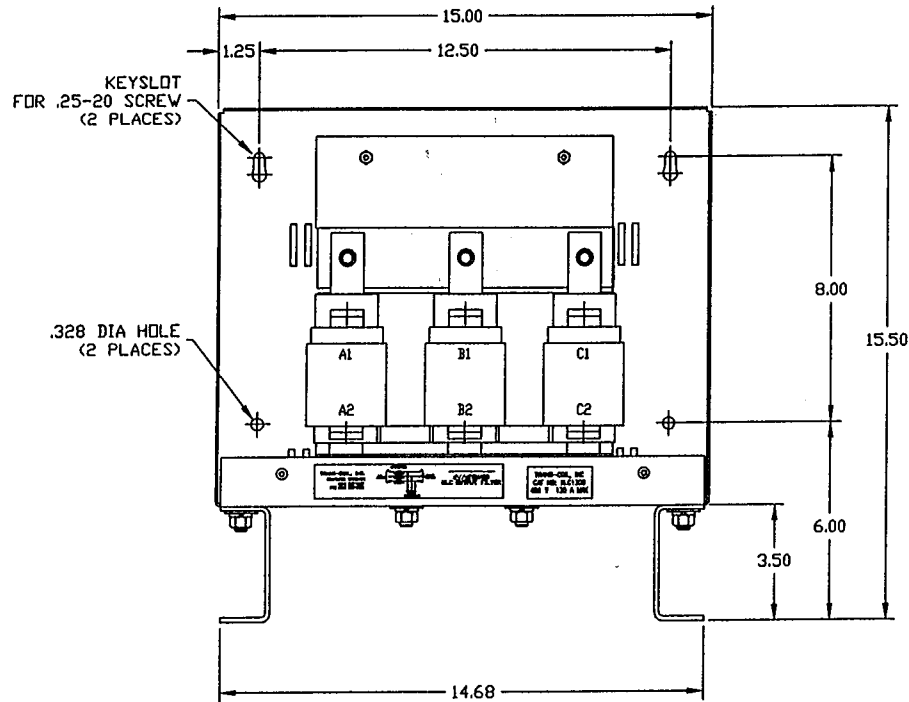
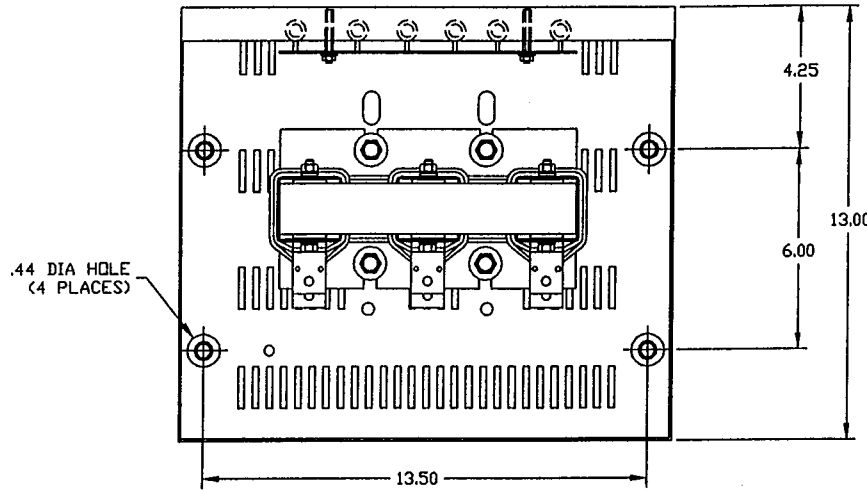
RECEIVED  
MAY 30 2003  
HG MULTIFEATURE BOARD

JUMPER=  
TCI P/N 13569

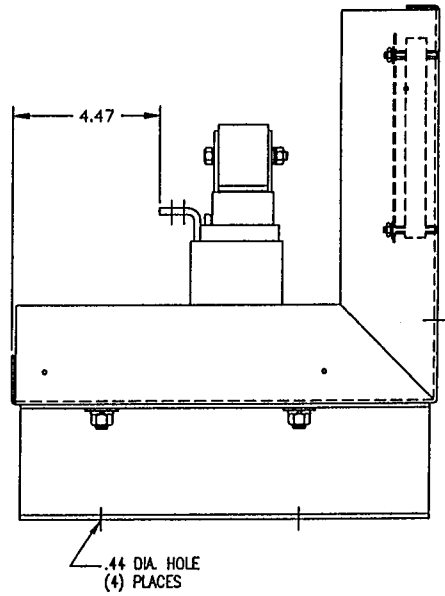
NO	REVISION	DATE	BY
B	J2 WAS TO A2	ECO 1881	
J	J4 WAS TO C2	1-11-00	RJC
A	CNT L1,2,3 & T1,2,3 SW	3/22/99	RJC

TOLERANCES (EXCEPT AS NOTED)		<b>TCI</b> 7878 N. 86th STREET MILWAUKEE, WI 53224
DECIMAL	.XX ±.01	
FRACTIONAL	.XXX ±.005	SCHEMATIC. "FLEXPAC", 480 V. LR SERIES, 25-50 KVAR
ANGULAR	± 1/32	
SCALE	3/32	DRW. BY RJC DATE 5-18-98 DWG. NO. B 21724-1
		APRVD. SHT. 1 OF 1



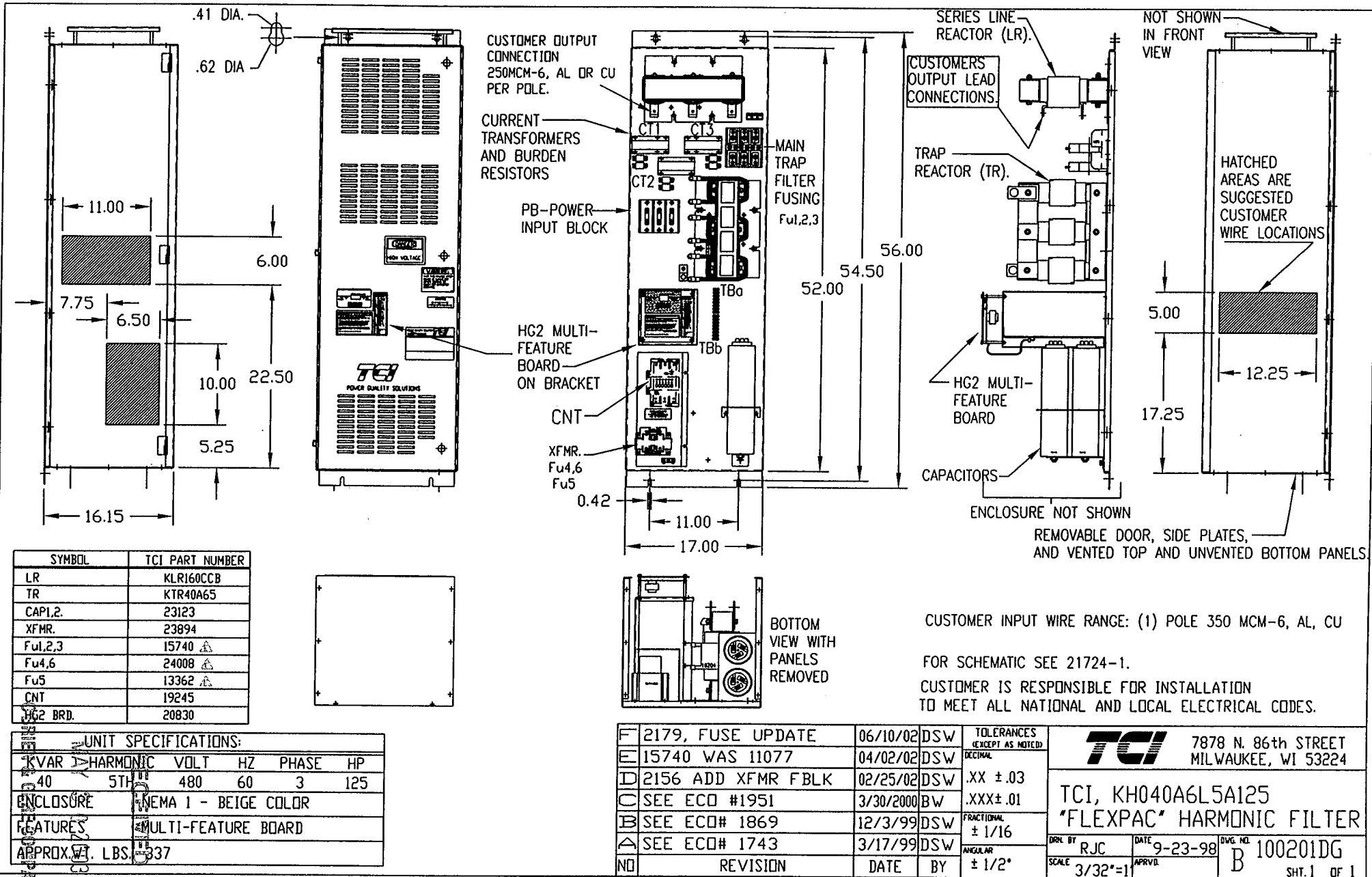


NOTES:  
 MATERIAL:  
 BASE: #12GA STEEL  
 COVER: #14GA STEEL  
 MOUNTING LEGS: #12GA STEEL  
 FINISH: BEIGE  
 TERMINAL HOLE SIZE: .28 DIA  
 APPROX WEIGHT: 96 LBS



TOLERANCES EXCEPT AS NOTED				<b>TCI</b> 7878 N. 86th STREET MILWAUKEE, WI 53224	
REVISION				KLC130B ASSEMBLY OPEN PANEL	
.XX ± .03				DATE 4/4/01	
.XXX ± .010				DRAWN BY RJC	
FRACTIONAL ± 1/16				DATE 4/4/01	
DECIMAL ± 1/2"				SCALE 3/8"=1"	
WAS 4" HIGH LEGS	4/4/01	RJC		ENC. NO. C	100391-dg
NO REVISION	DATE	BY		SHEET 1 OF 1	

BALDWINVILLE WWTP - INFLUENT PUMP NO. 2



SYMBOL	TCI PART NUMBER
LR	KLR160CCB
TR	KTR40A65
CAP1,2	23123
XFMR.	23894
Fu1,2,3	15740
Fu4,6	24008
Fu5	13362
CNT	19245
HG2 BRD.	20830

UNIT SPECIFICATIONS:					
KVAR	HARMONIC	VOLT	HZ	PHASE	HP
40	5TH	480	60	3	125
ENCLOSURE: NEMA 1 - BEIGE COLOR					
FEATURES: MULTI-FEATURE BOARD					
APPROX. WT. LBS.: 337					

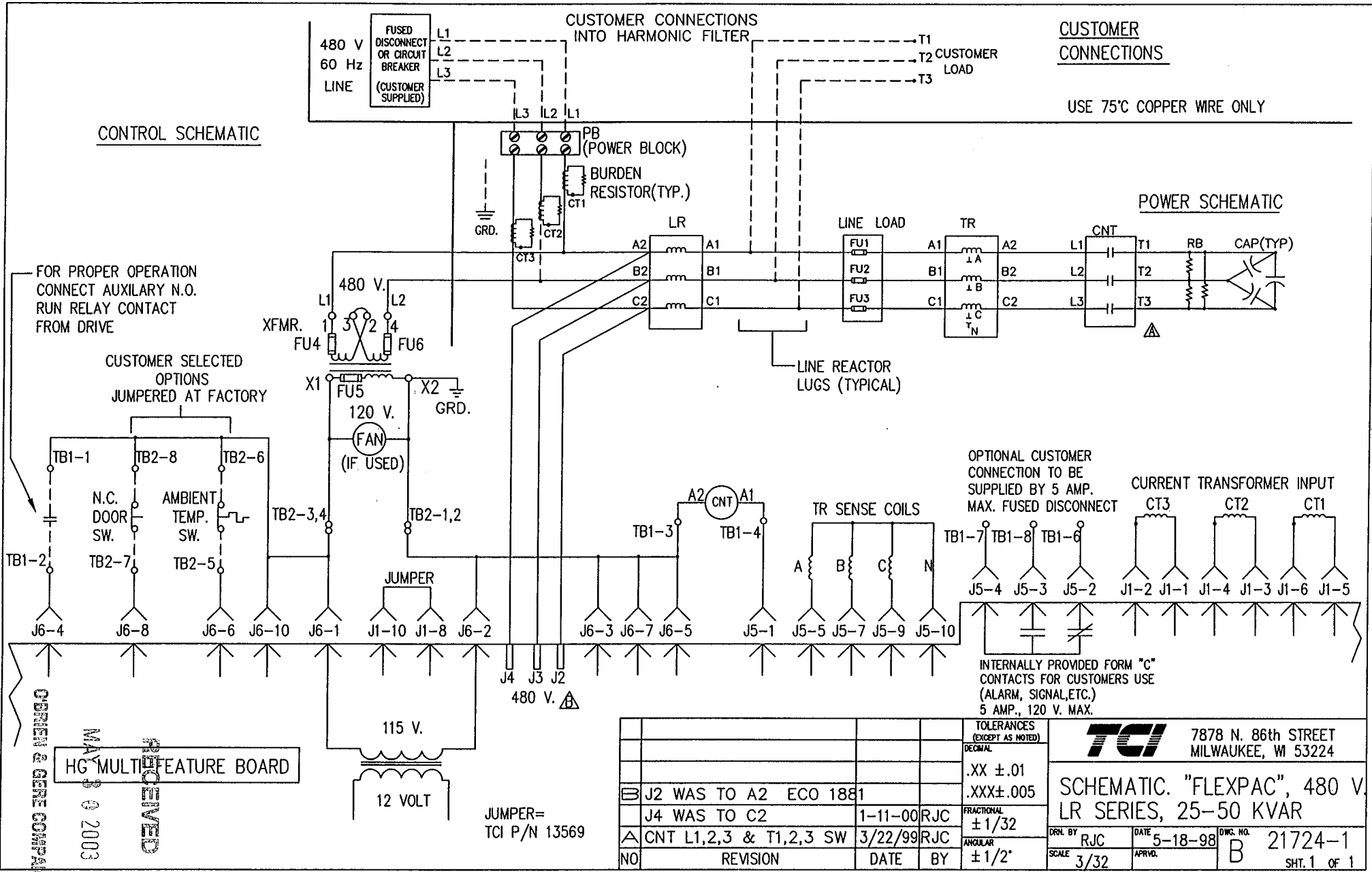
NO	REVISION	DATE	BY	TOLERANCES (EXCEPT AS NOTED)
F	2179, FUSE UPDATE	06/10/02	DSW	DECIMAL
E	15740 WAS 11077	04/02/02	DSW	.XX ± .03
D	2156 ADD XFMR FBLK	02/25/02	DSW	.XXX ± .01
C	SEE ECO #1951	3/30/2000	BW	FRACTIONAL ± 1/16
B	SEE ECO# 1869	12/3/99	DSW	ANGULAR ± 1/2°
A	SEE ECO# 1743	3/17/99	DSW	

**TCI** 7878 N. 86th STREET  
MILWAUKEE, WI 53224

TCI, KH040A6L5A125  
"FLEXPAC" HARMONIC FILTER

DWG. NO. 100201DG  
SHT. 1 OF 1

DATE: 9-23-98  
SCALE: 3/32"=1"



**CONTROL SCHEMATIC**

**CUSTOMER CONNECTIONS**

**POWER SCHEMATIC**

FOR PROPER OPERATION  
CONNECT AUXILIARY N.O.  
RUN RELAY CONTACT  
FROM DRIVE

CUSTOMER SELECTED  
OPTIONS  
JUMPED AT FACTORY

OPTIONAL CUSTOMER  
CONNECTION TO BE  
SUPPLIED BY 5 AMP.  
MAX. FUSED DISCONNECT

INTERNALLY PROVIDED FORM "C"  
CONTACTS FOR CUSTOMERS USE  
(ALARM, SIGNAL, ETC.)  
5 AMP., 120 V. MAX.

**HG MULTI-FEATURE BOARD**

MAY 30 2003

RECEIVED

OPEN & GERE COMPANIES

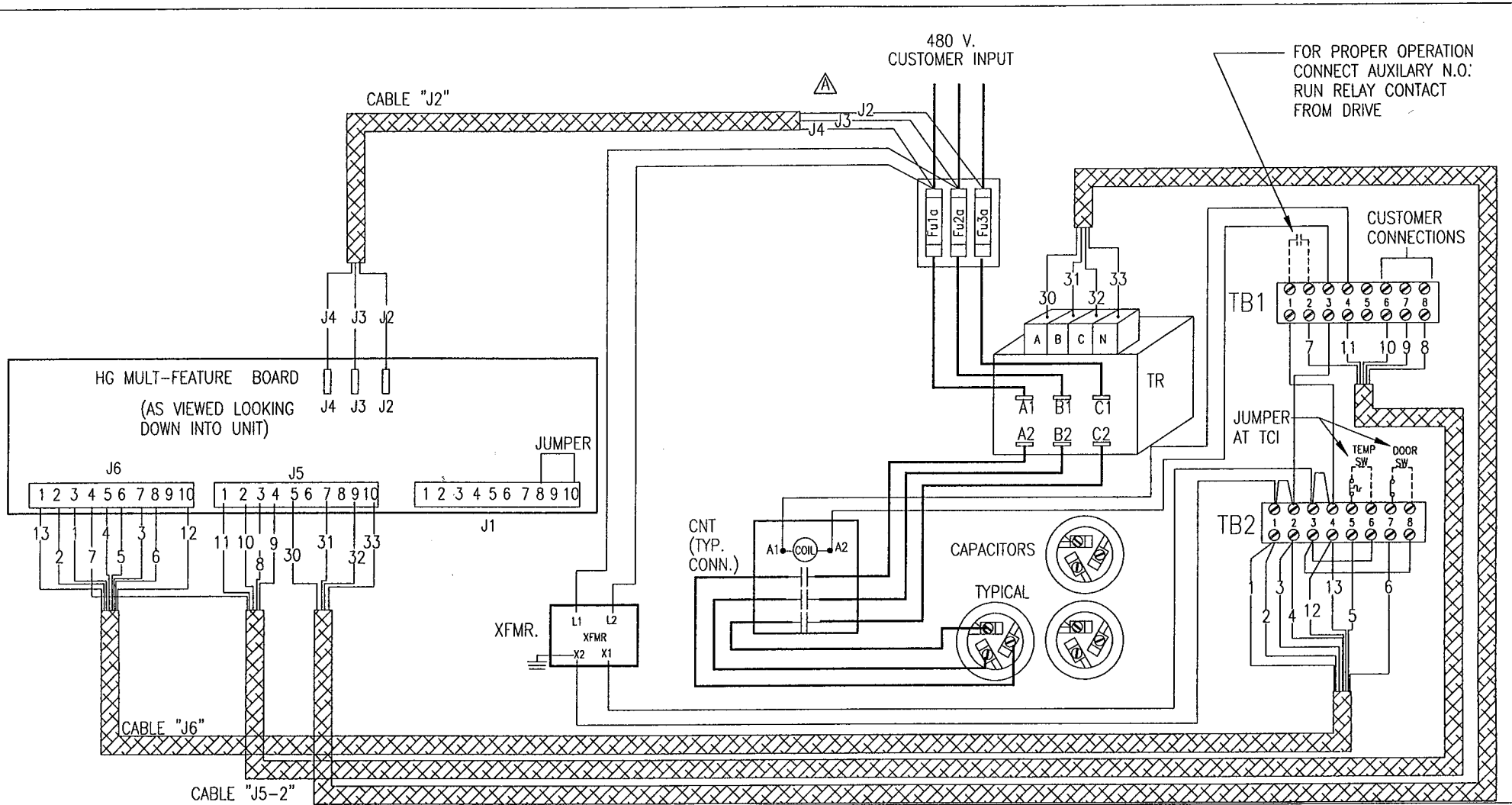
JUMPER=  
TCI P/N 13569

				TOLERANCES (EXCEPT AS NOTED)
				DECIMAL
				.XX ±.01
				.XXX±.005
				FRACTIONAL
J2 WAS TO A2	ECO 1881			± 1/32
J4 WAS TO C2		1-11-00	RJC	ANGULAR
CNT L1,2,3 & T1,2,3 SW		3/22/99	RJC	± 1/2"
NO	REVISION	DATE	BY	

**TCI** 7878 N. 86th STREET  
MILWAUKEE, WI 53224

**SCHEMATIC. "FLEXPAC", 480 V.  
LR SERIES, 25-50 KVAR**

DRN. BY	RJC	DATE	5-18-98	DWG. NO.	21724-1
SCALE	3/32	APRVD.		B	SHT. 1 OF 1



				TOLERANCES (EXCEPT AS NOTED)		7878 N. 86th STREET MILWAUKEE, WI 53224
				DECIMAL		
				.XX ± .03		WIRING, "FLEXPAC", 480 V. NR SERIES, 25-50 KVAR
				.XXX ± .01		
Δ J4 WAS TO FU3a(L1) ECD1881				FRACTIONAL		DRN. BY DSW DATE 6/17/99 DVG. NO. 22596-1
J2 WAS TO FU1a (L1) 1-11-00 RJC				± 1/32		
NO REVISION				ANGULAR		SCALE FULL
				± 1/2°		APRVD. B
						SHT. 1 OF 1